



## Hormead Road, W9

### £515,000

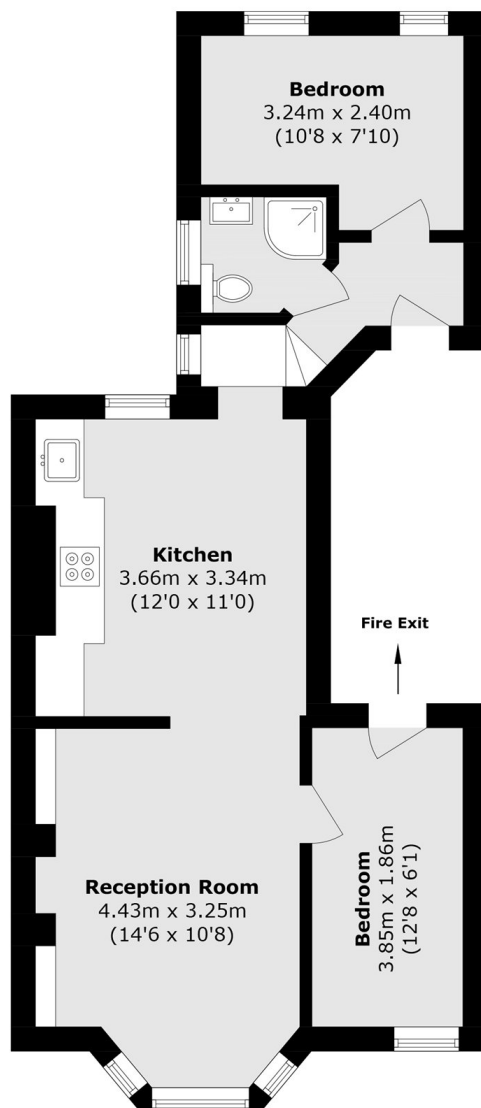
A stunning first floor flat set in a charming period conversion. This well-presented property comes complete with two double bedrooms, bright sizable reception with a large bay window and separate kitchen.

Hormead Road is a quiet and pleasant no-through road, and is closely located to Westbourne Park underground station (Hammersmith & City and Circle lines) and a multitude of bus routes. Portobello Road and Westbourne Grove are located within walking distance, with their numerous shops, markets, bars, pubs and restaurants.

### Features

- First Floor Flat
- Separate Kitchen
- Two Double Bedrooms
- Sash Windows
- Share of Freehold
- Great Location

# Hormead Road, Maida Vale, W9



Total area (approx.): 46.9 sq. m (504.8 sq. ft)

## Dexters

Maida Vale  
298 Elgin Avenue  
London  
W9 1JS  
Sales  
020 7266 2020

Energy Rating: C. We aim to make our particulars both accurate and reliable. However they are not guaranteed; nor do they form part of an offer or contract. If you require clarification on any points then please contact us, especially if you're traveling some distance to view. Please note that appliances and heating systems have not been tested and therefore no warranties can be given as to their good working order.

 **RICS** | Regulated  
Estate Agent  
and Letting Agent

[dexters.co.uk](https://dexters.co.uk)