

first for homes

first for property in life - [firstforhomes.co.uk](https://www.firstforhomes.co.uk)

Contact Allan England's Team

01592 752 944



Ladybank Road, Kingskettle

Offers over £259,995

Ladybank Road, Kingskettle

Nestled in the Tranquil Village of Kingskettle. A Beautifully Extended 3-Bedroom Detached Bungalow with 3-Car Driveway

Allan England's Award-Winning Team at First For Homes are delighted to present to the market this rarely available 3-Bedroom Extended Detached Bungalow, set within the peaceful and sought-after Village of Kingskettle. This charming home welcomes you through an entrance porch into a bright and inviting hallway. The generously proportioned family lounge boasts a stunning feature fireplace, creating a warm and relaxing focal point. A thoughtfully added sunroom extension enhances the living space, offering the perfect spot to unwind while enjoying views of the garden. The stylish sage green kitchen is open plan with a dining area, ideal for both everyday living and entertaining, and further benefits from a separate utility room for added convenience. The spacious master bedroom features built-in triple wardrobes and a modern en-suite shower room. Two additional well-positioned bedrooms both offer built-in double wardrobes and are served by a beautifully presented and well-proportioned family bathroom. Externally, the property enjoys beautifully maintained and mature garden grounds, offering an abundance of greenery and a peaceful outdoor retreat. A patio seating area provides the ideal space for outdoor dining or relaxation. A generous 3-car driveway to the side of the property completes this fantastic home.

Properties of this style and location are in high demand — early viewing is highly recommended to avoid disappointment.

HOME REPORT VALUE: £270,000
EPC RATING: C
COUNCIL TAX BAND: E

Call First For Homes — first for trust... first for service... first for aftercare.

The charming Village of Kingskettle lies at the side of the A914 road network providing easy access to all major towns and cities. The Village has a variety of shops, a nursery and primary school nearby and within just 2 miles of the property lies the Village of Ladybank which has a mainline Railway Station with commuting links direct to Edinburgh, Dundee, Perth, and most major cities.





SITUATION - Kingskettle

ENTRANCE PORCH

HALLWAY

LOUNGE

15'1" x 11'10" (approx) (4.62m x 3.62m (approx))

OPEN PLAN KITCHEN/DINER

17'5" x 13'1" (approx) (5.33m x 4.00m (approx))

UTILITY ROOM

SUNROOM EXTENSION

13'1" x 11'8" (approx) (4.00m x 3.58m (approx))

BEDROOM 1

13'1" x 12'6" (approx) (4.00m x 3.82m (approx))

EN-SUITE SHOWER ROOM

BEDROOM 2

13'1" x 8'11" (approx) (4.00m x 2.74m (approx))

BEDROOM 3

7'11" x 8'6" (approx) (2.43m x 2.61m (approx))

BATHROOM

9'6" x 7'11" (approx) (2.91m x 2.42m (approx))

3 CAR DRIVEWAY TO SIDE

FRONT, SIDE AND REAR GARDEN GROUNDS

INFORMATION



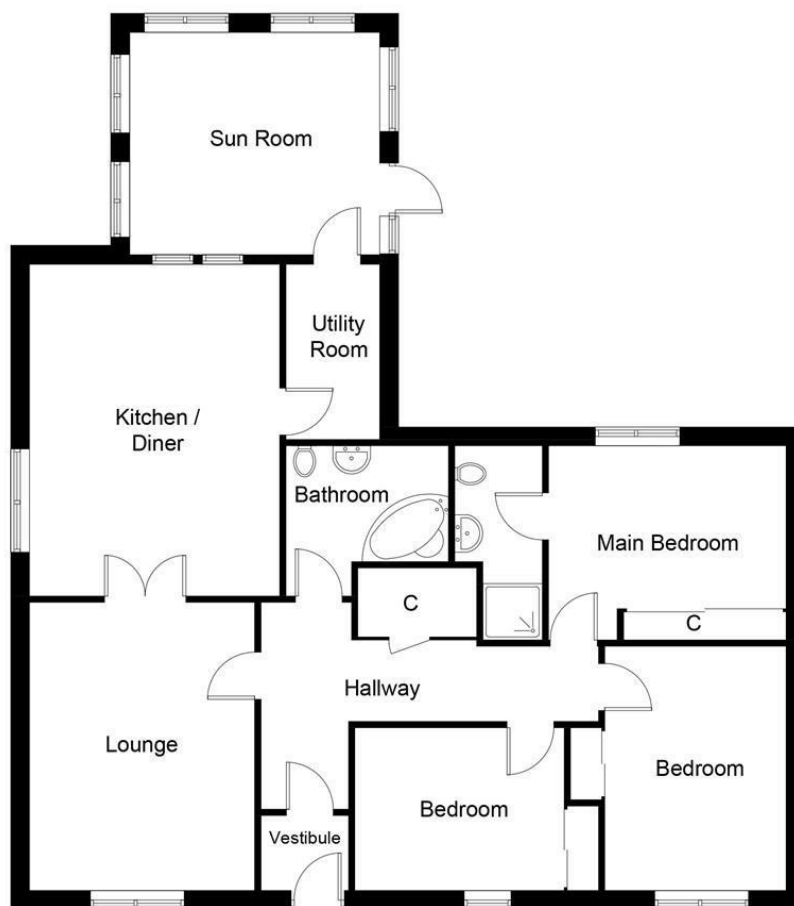


Illustration for identification purposes only, measurements are approximate, not to scale. Fourlabs.co © (ID1308128)

Information

These particulars are prepared on the basis of information provided by our clients. We have not tested the electrical system or any electrical appliances, nor where applicable, any central heating system. All sizes are recorded by electronic tape measurement to give an indicative, approximate size only. Prospective purchasers should make their own enquiries – no warranty is given or implied. This schedule is not intended to, and does not form any contract.

FREE Valuation

Selling Your Home?

Choose first for homes - a highly experienced estate agency team you can trust to sell your home at the highest possible price. Offering fantastic savings on selling fees, with no compromise on service, free professional photography highlighting your home in its best light, first for homes will be your first choice. Contact us today to arrange your appointment.



first for trust



first for service



first for aftercare

first for homes

first for property in life - firstforhomes.co.uk

Contact Allan England's Team

01592 752 944

32 North Street, Glenrothes, Fife KY7 5NA

Fax: 01592 807947

sales@firstforhomes.co.uk

www.firstforhomes.co.uk