



Jarrow Way, E9

£585,000

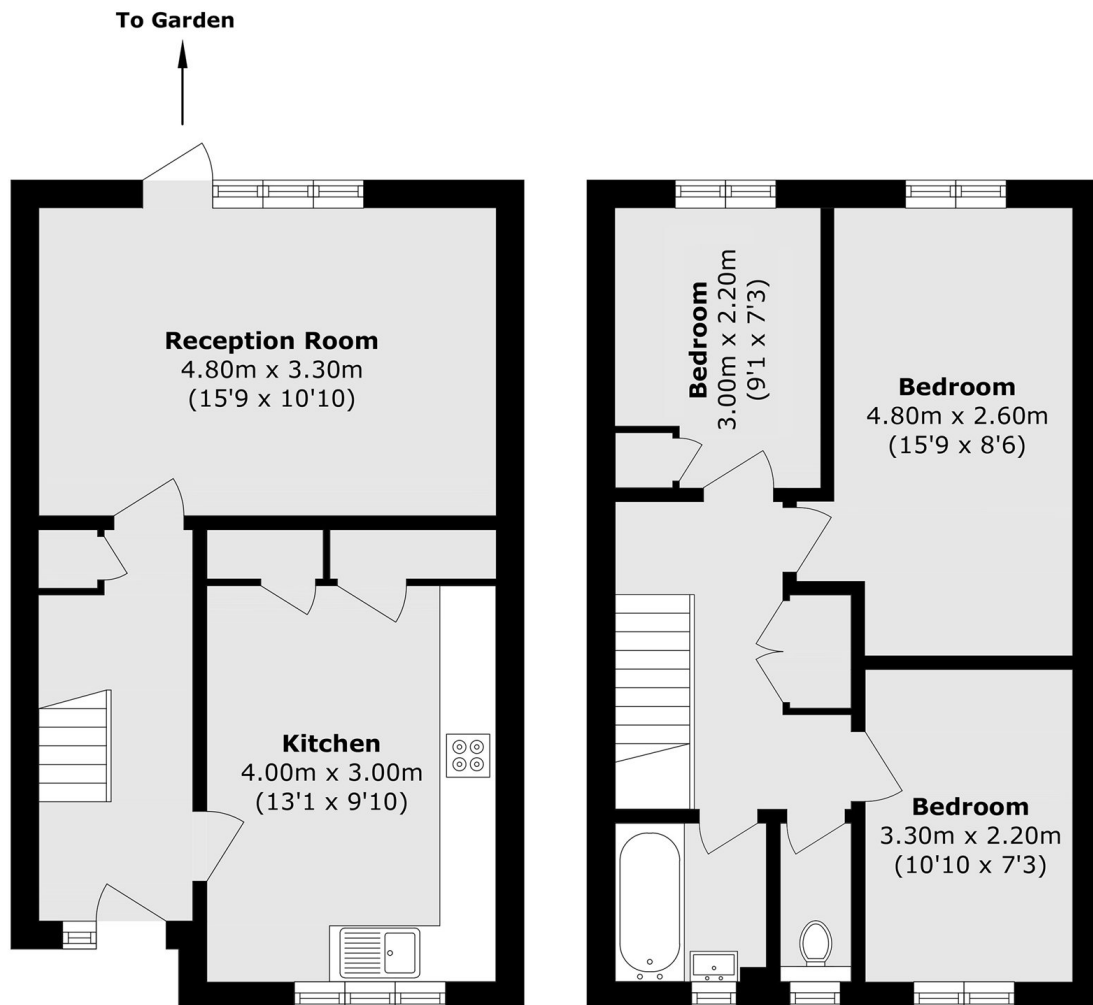
A three bedroom end of terrace home with its own private entrance and garden. The property has a separate kitchen, plenty of storage, family bathroom with separate W/C and double glazed windows throughout. It is being sold chain free.

The open spaces of Hackney Marshes, Queen Elizabeth Park & Victoria Park are within walking distance providing green views, riverside walks and recreational activities. The many shops, restaurants and bars of Chatsworth Road & Hackney Wick & Homerton and Hackney Wick Station are all under one mile away.

Features

- Three Bedrooms
- End of Terrace
- Garden
- Over 860sq ft
- Hackney Marshes
- Chain Free

Jarrow Way, London, E9



Ground Floor

First Floor

Total area (approx.): 80.1 sq. m (862.1 sq. ft)