

## Keats Close, Horsham

Guide Price £725,000

4 2 2



An impressive Detached Family Home located at the end of a Small Cul De Sac, boasting Four Generous Bedrooms, a Refitted 20ft Kitchen Dining Room and a recently Landscaped Rear Garden.

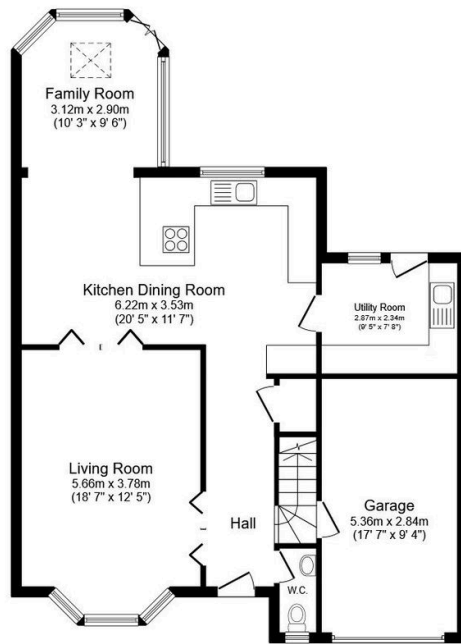
Tenure: Freehold

Council Tax Band: F

EPC: Current D - Potential C

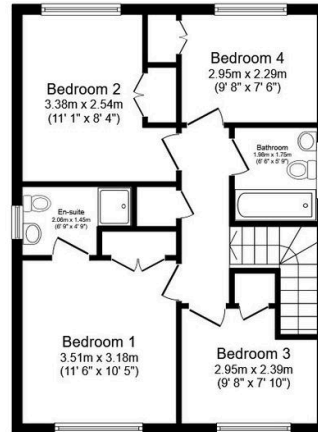
## Key Features

- Watch Our Video Tour
- 20ft Open Plan Kitchen Dining Room
- En Suite To Principal Bedroom
- Cul De Sac Location
- 0.6 Miles From Little haven Station
- Four Generous Bedrooms With Wardrobes
- 18ft Bay Fronted Living Room
- 17ft Integral Garage & Driveway Parking
- Close To Popular Schools
- Utility Room & Separate WC



**Ground Floor**

Floor area 87.8 sq.m. (945 sq.ft.)



**First Floor**

Floor area 53.7 sq.m. (578 sq.ft.)

Total floor area: 141.5 sq.m. (1,523 sq.ft.)

This floor plan is for illustrative purposes only. It is not drawn to scale. Any measurements, floor areas (including any total floor area), openings and orientations are approximate. No details are guaranteed, they cannot be relied upon for any purpose and do not form any part of any agreement. No liability is taken for any error, omission or misstatement. A party must rely upon its own inspection(s). Powered by [www.Propertybox.io](http://www.Propertybox.io)