



## 72 Green Pastures, Stockport, SK4 3RA

£2,500 Per Month

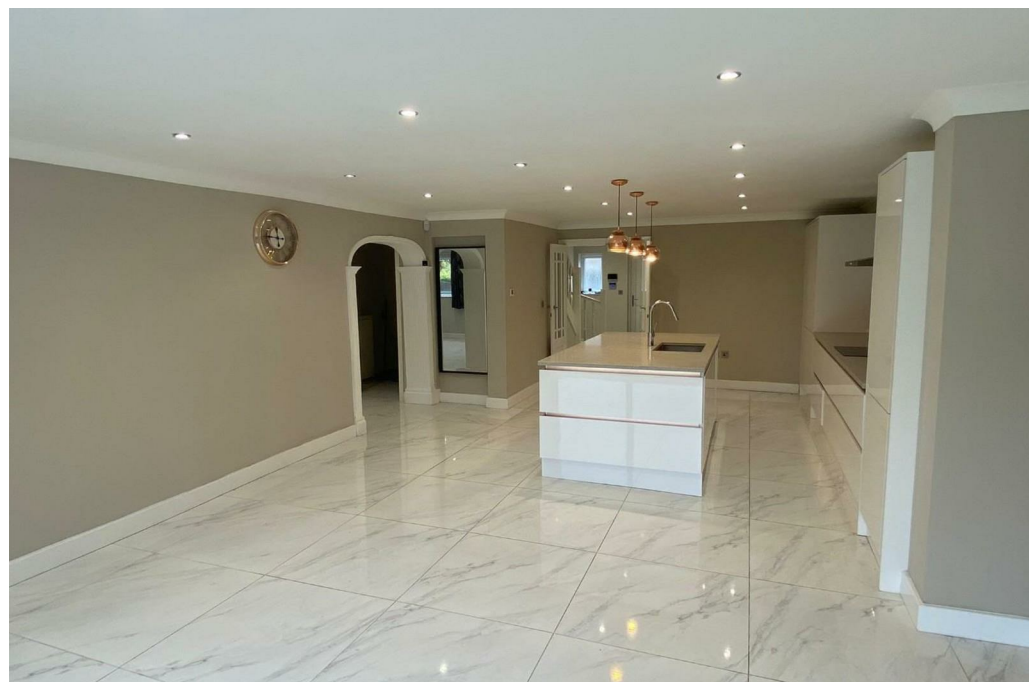
- STUNNING 5 BED DETACHED
- INTEGRAL GARAGE
- SHORT WALK TO EAST DIDSBURY METROLINK
- UNFURNISHED
- STYLISH KITCHEN/DINING ROOM
- OFF ROAD PARKING
- EASY ACCESS TO A34 AND MOTORWAYS
- 3 ENSUITES AND FURTHER SHOWER ROOM
- LARGE GARDEN TO REAR
- CONVENIENTLY CLOSE TO MANCHESTER AIRPORT

# 72 Green Pastures, Stockport SK4 3RA

A stunning 5 bed detached set in the popular Heaton Mersey location of Green Pastures. Downstairs., this larger than average property comprises; a grand entrance hall, a huge and stylish open plan kitchen/dining room with island kitchen (includes integrated appliances), a separate fitted kitchen, a well proportioned double bedroom with ensuite and a downstairs W.C. Upstairs, there is a lounge with balcony area, 4 further bedrooms, 2 further ensuite and a separate shower room. There is also an useful integrated garage and the house includes plenty of storage space. The property is warmed by gas central heating/underfloor heating. There is a large garden with patio area to rear as well as garden to front with ample off-road parking. Conveniently located within a short walk of East Didsbury Metrolink and with easy access to A34 and motorway and conveniently close to Manchester Airport. THIS REALLY IS A MUST SEE PROPERTY!! UNFURNISHED.



Council Tax Band: F











Directions

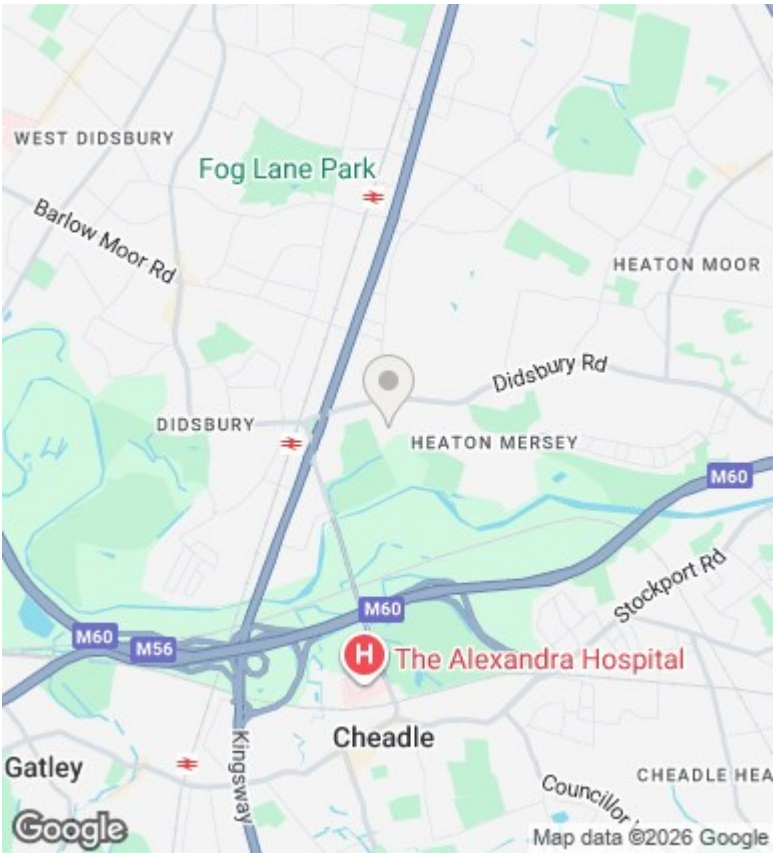
450 Didsbury Road, Stockport, Cheshire, SK4 3BS  
0161 432 0432

Viewings

Viewings by arrangement only. Call 0161 432 0432 to make an appointment.

Council Tax Band

F



Energy Efficiency Rating		
	Current	Potential
Very energy efficient - lower running costs		
(92 plus) A		
(81-91) B		81
(69-80) C	73	
(55-68) D		
(39-54) E		
(21-38) F		
(1-20) G		
Not energy efficient - higher running costs		
England & Wales		EU Directive 2002/91/EC

info@joulesestateagents.com  
<https://www.joulesestateagents.com/>