



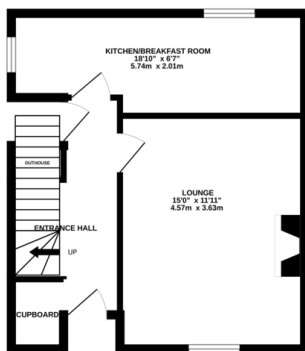
## FOR SALE

3 Bed Semi-Detached House in Schoolgate, Leicester LE2 6SL  
£220,000

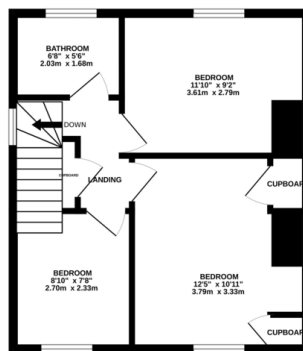
\*\*\* No Chain \*\*\* Semi-detached property for sale which has had a new kitchen, bathroom and been re-decorated throughout. The accommodation comprises entrance hall, lounge, breakfast kitchen, three bedrooms, bathroom and gardens to the front and rear. Ideal first time buy or investment property.



GROUND FLOOR  
384 sq.ft. (35.6 sq.m.) approx.

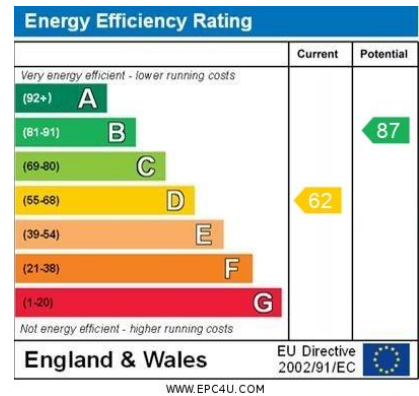


1ST FLOOR  
394 sq.ft. (36.6 sq.m.) approx.



TOTAL FLOOR AREA: 778 sq.ft. (72.3 sq.m.) approx.

Whilst every attempt has been made to ensure the accuracy of the figures contained here, measurements of doors, windows, rooms and any other items are approximate and no responsibility is taken for any error, omission or mis-statement. This plan is for guidance purposes only and should be used as such by any prospective purchaser. The services, systems and appliances shown have not been listed and no guarantee as to their operability or efficiency can be given.  
Made with Metropix 12/2019



- No Chain
- Semi Detached
- Three Bedrooms
- New Kitchen
- New Bathroom
- Ideal Family Home
- Further Potential For Improvement
- Front & Rear Gardens

**Agents Note:** Whilst every care has been taken to prepare these sales particulars, they are for guidance purposes only. All measurements are approximate and for general guidance purposes only and whilst every care has been taken to ensure their accuracy, they should not be relied upon and potential buyers are advised to recheck the measurements.

