

Buller Park, Saltash, PL12 4LD

Guide Price £190,000

🛏 2 🍷 1 🚗 1



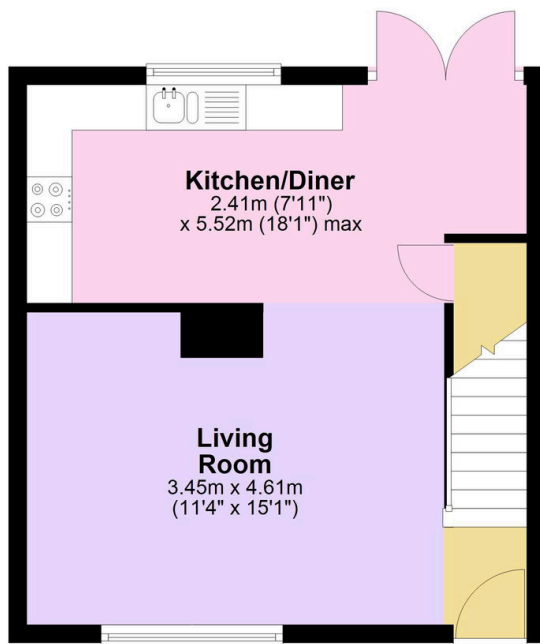
Tucked away in a quiet location, this spacious two double bedroom home is immaculately presented and truly move-in ready. Having been freshly painted throughout and benefiting from new flooring and carpets, the property offers a stylish and modern finish from the moment you step inside. The welcoming entrance leads into a generous living room which flows seamlessly into a bright and contemporary kitchen/diner – a fantastic space for both everyday living and entertaining. Patio doors open directly onto the garden, which is thoughtfully laid to patio for low maintenance enjoyment. Upstairs, you will find two spacious double bedrooms, both bright and airy, along with a large landing area that offers the perfect spot for a desk. A modern family bathroom completes the first floor.

Key Features

- Freehold - Council Tax Band B - EPC D
- Two bright and airy double bedrooms
- Generous living room flowing into a bright, modern kitchen/diner
- Large landing area ideal for a desk or home working space
- No onward chain
- Spacious terrace home
- Freshly painted with new flooring and carpets
- Low-maintenance patio garden
- Family bathroom
- Quote BH0675 to book your viewing

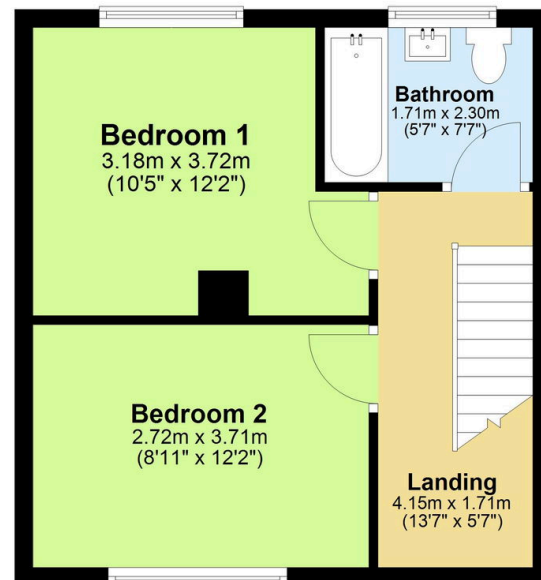
Ground Floor

Approx. 33.0 sq. metres (355.7 sq. feet)



First Floor

Approx. 37.1 sq. metres (399.4 sq. feet)



Total area: approx. 70.1 sq. metres (755.1 sq. feet)