



Jubilee Walk | Harvington | Evesham | WR11 8PL

Guide Price £325,000

—
COOPER & CO
—

Key features

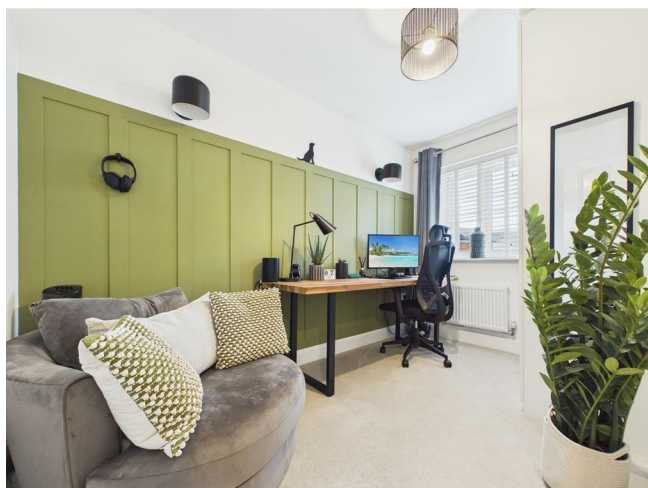
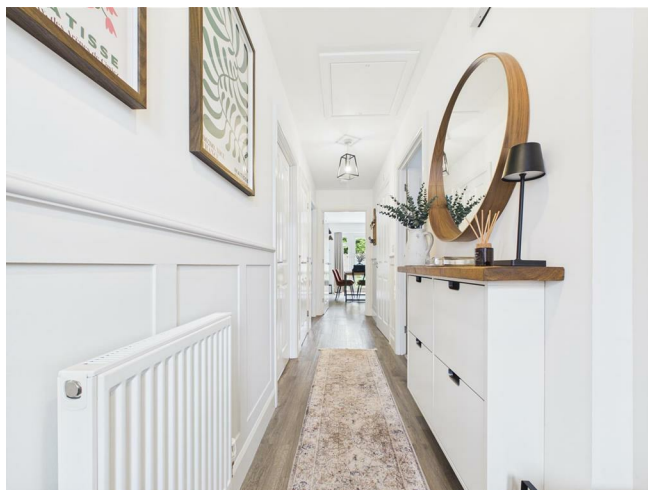
- IMMACULATE SEMI DETACHED BUNGALOW
- SOUGHT AFTER VILLAGE LOCATION
- TWO BEDROOMS - MAIN WITH FITTED WARDROBES
- LIGHT AND AIRY LOUNGE
- MODERN KITCHEN DINING ROOM WITH PATIO DOORS
- STORAGE CUPBOARD IN HALLWAY
- WELL PRESENTED FAMILY BATHROOM
- PRIVATE AND SECURE LANDSCAPED REAR GARDEN
- TANDEM DRIVEWAY FOR 2+ CARS
- VIEWINGS 7 DAYS A WEEK

Description

**** IMMACULATE TWO BEDROOM SEMI DETACHED BUNGALOW IN THE CHARMING VILLAGE OF HARVINGTON ****

Internally, the property boasts two bedrooms, kitchen dining room opening up to the rear garden, lounge, family bathroom, plenty of storage. Externally, the property benefits from a large and secure landscaped garden with shed and patio seating area , the property also benefits from a large tandem driveway for multiple cars and low maintenance front garden. Property benefits from having NHBC Warranty.

- Wychavon CC
- Tax Band - C
- EPC - B



Front

Property is approached via paved pathway with driveway for up to 3 cars, low maintenance front garden, side pedestrian access to the rear garden. Property also benefits from Electric car chargers.

Hallway

Wood Effect Vinyl flooring, Radiator, Doors leading to Living Room, Two Bedrooms, Bathroom, Kitchen Dining Rom. Storage Cupboard & Access to the loft.

Living Room

Carpet flooring underfoot, radiator and UPVC window to rear aspect, Feature log burner with surround.

Kitchen Dining Room

Vinyl flooring, mix of wall and base units surmounted with work surface, kitchen sink, integrated gas hobs with extractor fan over, integrated oven, integrated fridge freezer dishwasher & washer dryer. UPVC Patio Doors to rear garden.

Family Bathroom

Wood affect vinyl flooring underfoot, bath with over head shower, wash hand basin, low flush wc, Radiator , Frosted UPVC window to the side aspect.

Bedroom I

Carpeted flooring, UPVC window to the front aspect, radiator, bespoke integrated paneled wardrobes.







Bedroom 2

Carpeted flooring, UPVC window to the front aspect and radiator.

Rear Garden

Enclosed secure landscaped north facing garden with a good mix of patio seating area and lawned area, with garden shed, and access to the driveway via pedestrian gate.

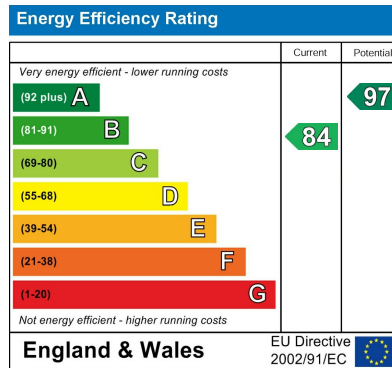
Location

Harvington is a charming village in Worcestershire, located close to Evesham and surrounded by attractive countryside and traditional rural charm. The village benefits from good road connections via the A46, providing access to Worcester, Stratford-upon-Avon and the M5, while nearby Evesham railway station offers direct rail services to Worcester, Oxford and London. School transport services also connect Harvington with nearby middle and high schools. Families are served by Harvington CofE First School, a well-regarded primary school for children.

Agents Note

Sellers have made us aware there is a landscape maintenance charge of £350.00 per annum for the estate.

Floor plans



I Port Street
Evesham
Worcestershire
WR11 3LA
01386 574 000

sales@cooperandcoestateagents.co.uk