



Millbank, London SW1P
Price £2,450 per week - Furnished







Description

This three-bedroom apartment has been finished to the highest of specifications and furnished beautifully throughout. There is a spacious open-plan living space with a luxury Kitchen with integrated Küppersbusch appliances, a principal bedroom with dressing room and elegant en-suite bathroom, a second double bedroom with an en-suite bathroom, a third double bedroom and a family bathroom. The apartment further benefits from engineered timber flooring, comfort cooling and underfloor heating throughout.

Milbank Quarter provides residents with the highest quality leisure facilities, including a 24-hour concierge, a state-of-the-art gym, luxurious swimming pool with spa and treatment room, private cinema screening room, meeting rooms.

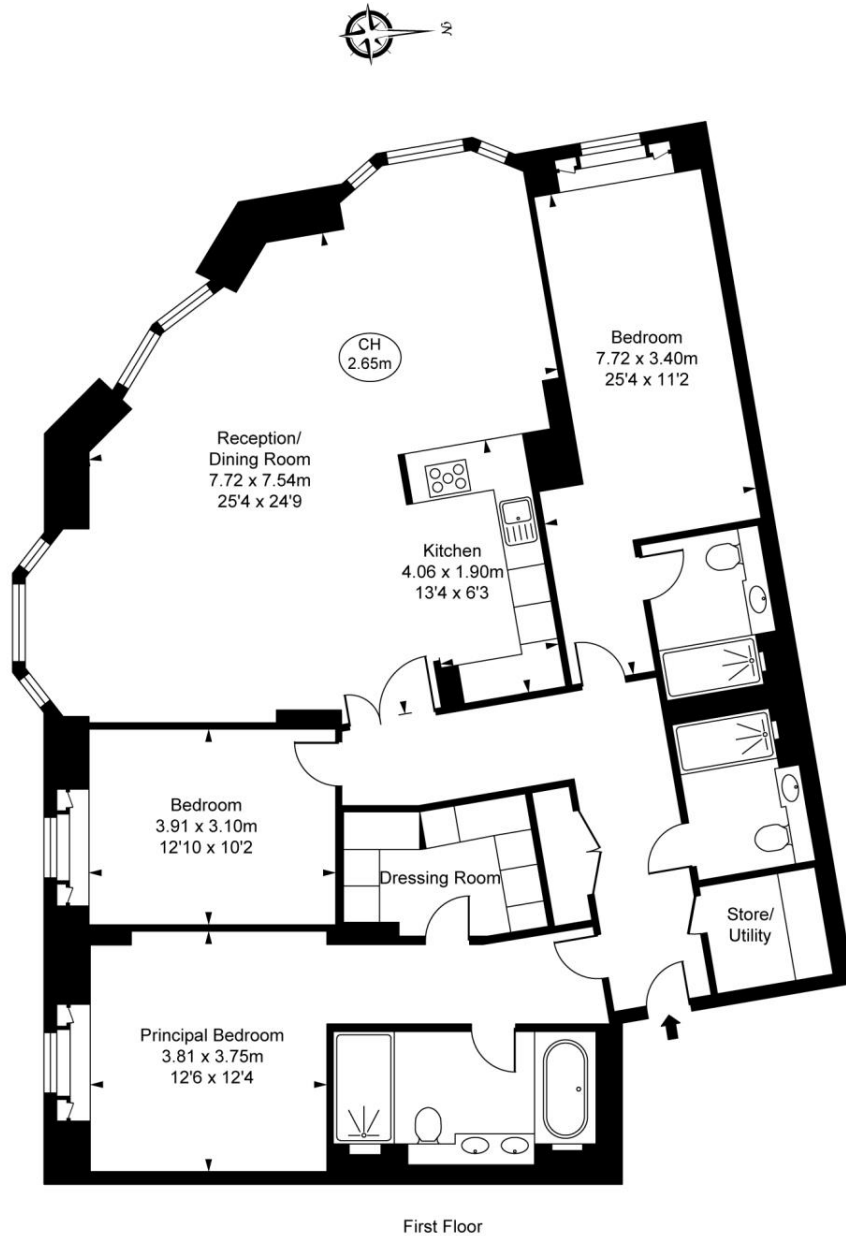
Council tax band: H. Rent is payable on a monthly basis, and you may be required to pay more than a month's rent in advance for tenancies with annual rents exceeding £100,000. You will be required to pay a 1 week holding deposit following a successful offer. Tenancies with annual rents up to £50,000 will require a 5 weeks' security deposit, while those exceeding this threshold will require a 6 weeks' deposit. Utility bills, council tax, telephone line and broadband are not included in the rent. As well as paying the rent, you may also be required to make some additional permitted payments. If your tenancy does not qualify as an APT, additional fees may apply. Please visit jll.co.uk/fees for details of fees that may be payable when renting a property. To check broadband and mobile phone coverage please visit [Ofcom](http://ofcom.org.uk/phones-telecoms-and-internet/advice-for-consumers/advice/ofcom-checker) here ofcom.org.uk/phones-telecoms-and-internet/advice-for-consumers/advice/ofcom-checker

- Luxury Development
- Measuring 156sqm / 1,682sqft Large Terrace
- Open-plan Reception Room
- Three Double Bedrooms
- Three Bathrooms
- Residents Gym
- Swimming pool & Spa
- Beautifully Furnished
- Council tax: Band H
- Deposit amount: £15,000(estimate) and an initial holding deposit of 1 week's rent is pa

Floorplan

1,682 sq ft | 156 sq m

Millbank, SW1P
Approximate Gross Internal Area
156.22 sq m / 1,682 sq ft
(CH = Ceiling Heights)



This plan is not to scale. It is for guidance and not for valuation purposes.
All measurements and areas are approximate only, and have been prepared in accordance with the current edition of the RICS Code of Measuring Practice.
© Fulham Performance

Mayfair and Marylebone
St George Street,
London W1S 2FQ
+44 207 399 5550
mayfair@jll.com

Urban living, your way.

jll.co.uk/residential

© 2019 Jones Lang LaSalle IP, Inc. All rights reserved. All information contained herein is from sources deemed reliable; however, no representation or warranty is made to the accuracy thereof.

