



STREATHAM HILL, SW2

£375,000

- Victorian mansion flat
- Two bedrooms
- Top floor with lift
- Close proximity to station
- Excellent condition
- Energy rating: C



2



1



1



ABOUT THE HOME

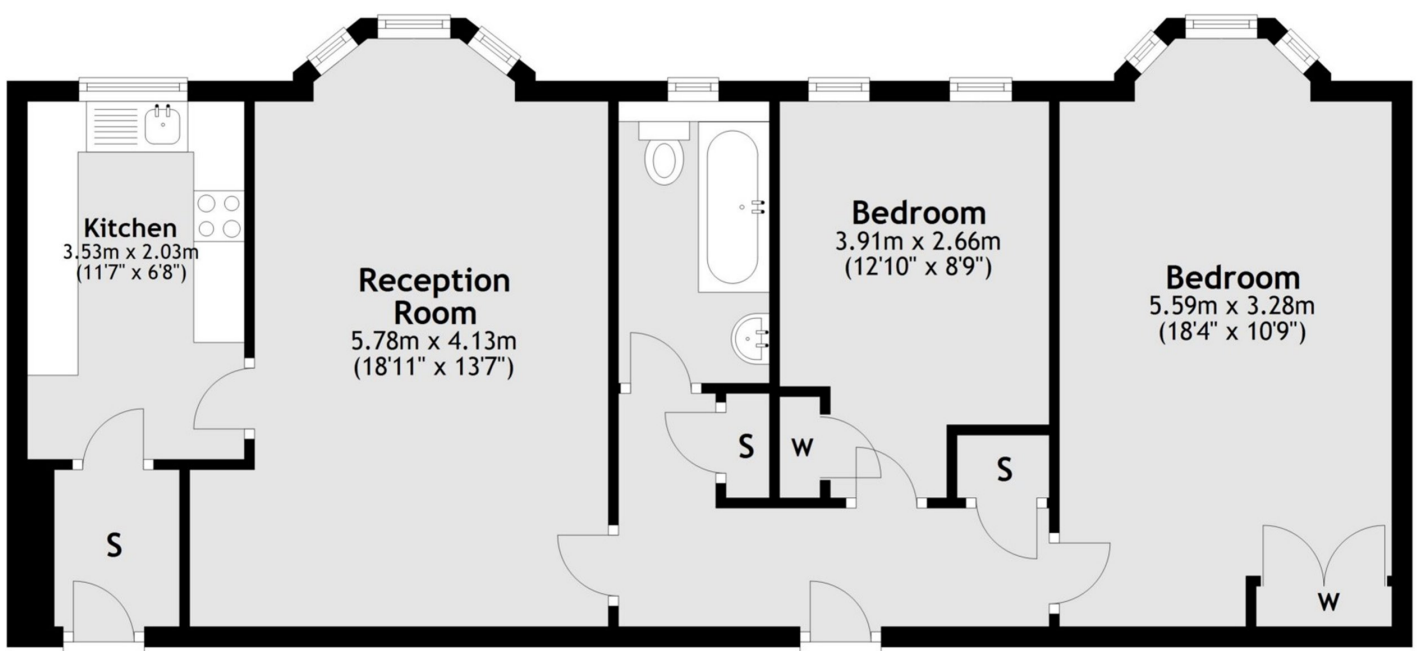
A spacious two bedroom mansion flat in a beautiful art deco building located closely to transport links in Streatham Hill. This property includes a large reception/ dining room and is in immaculate condition.

Wyatt Park Mansions is a popular development set back from Streatham High Road offering easy access to both Streatham Hill Station and the local amenities.





Second Floor



Total area: approx. 71.6 sq. metres (770.6 sq. feet)

JACKSONS STREATHAM

1-3 De Montfort Parade,
Streatham High Road,
Sales: 020 8487 3179
Lettings: 020 8487 3180

Energy Rating: C We aim to make our particulars both accurate and reliable. However they are not guaranteed; nor do they form part of an offer or contract. If you require clarification on any points then please contact us, especially if you're traveling some distance to view. Please note that appliances and heating systems have not been tested and therefore no warranties can be given as to their good working order.