



BRONDESBURY PARK, NW6

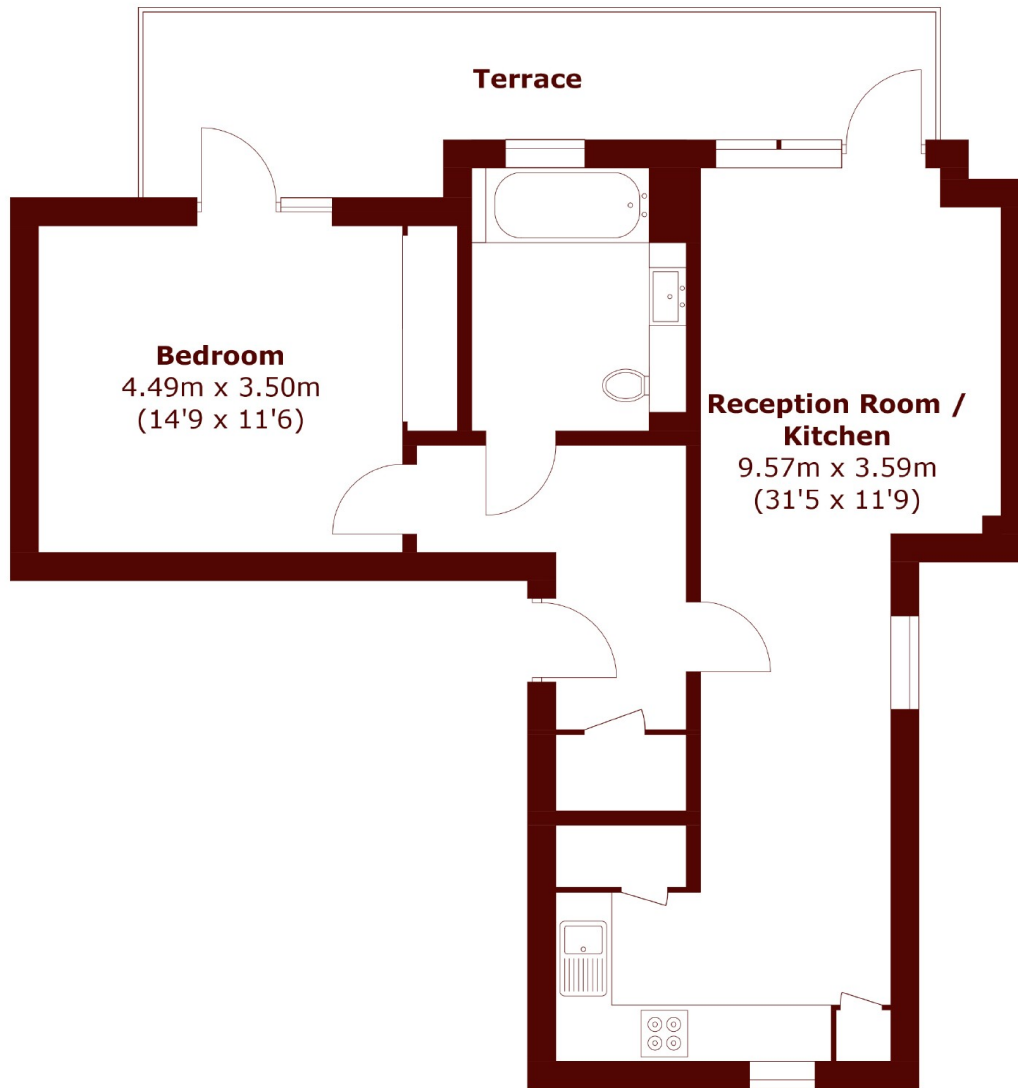
£399,999

A contemporary one-bedroom apartment with a large private balcony, situated within a quiet modern development in Brondesbury Park.

One Bedroom
Roof Terrace
Great Condition

Off-Street Parking
Electric Charge Point
Triple-Aspect

STEP INSIDE BRONDESBURY PARK



Total area (approx.): 59.1 sq. m (636.1 sq. ft)
Terrace: 13.7 sq. m (147.5 sq. ft)

Queen's Park
020 7624 4513

Energy Rating: B We aim to make our particulars both accurate and reliable. However, they are not guaranteed; nor do they form part of an offer or contract. If you require clarification on any points then please contact us, especially if you're traveling some distance to view. Please note that appliances and heating systems have not been tested and therefore no warranties can be given as to their good working order

**MARSH &
PARSONS**