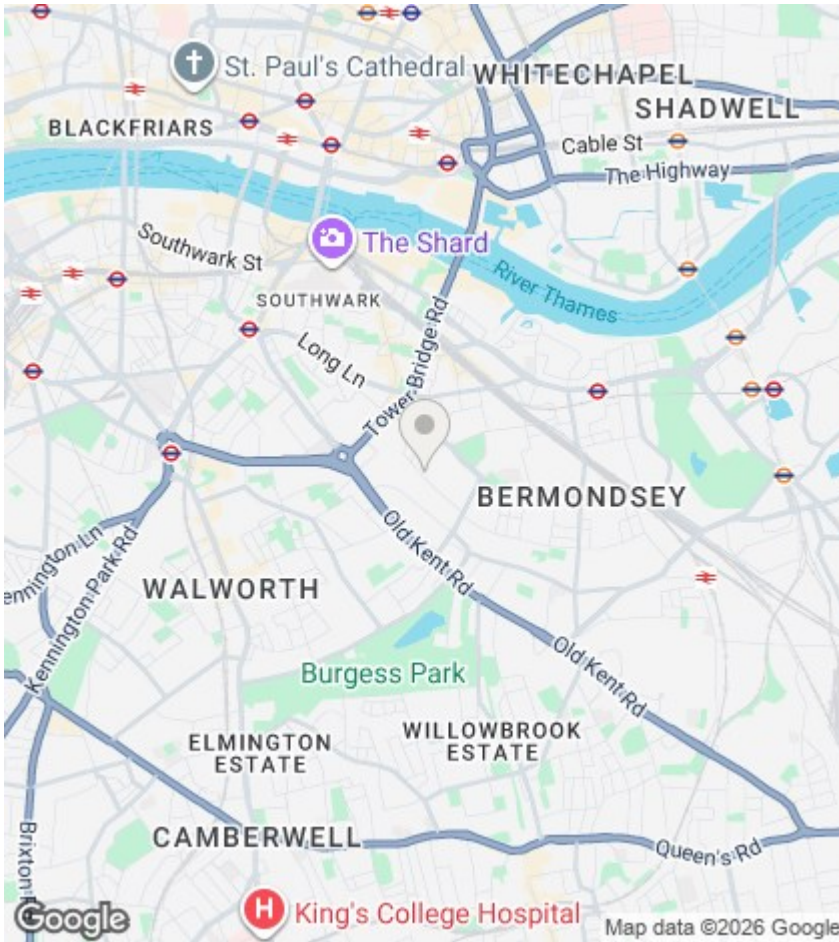




## The Pickle Factory, London

£750 Per Week



## Directions

## Viewings

Viewings by arrangement only. Call 02033696888 to make an appointment.

## Council Tax Band:

E

## EPC Rating:

B

Energy Efficiency Rating		Current	Potential
Very energy efficient - lower running costs			
(92 plus) A			
(81-91) B		82	82
(69-80) C			
(55-68) D			
(39-54) E			
(21-38) F			
(1-20) G			
Not energy efficient - higher running costs			
England & Wales		EU Directive 2002/91/EC	

## Third floor NORTH CORE

### PLOT 1

2 BEDROOM APARTMENT

#### KITCHEN/LIVING/DINING

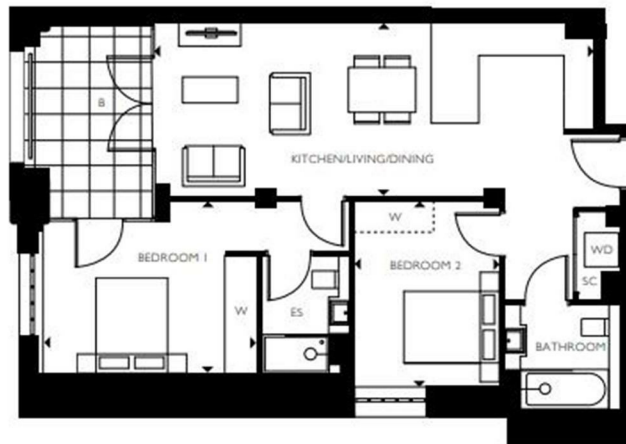
8.49m x 3.34m 27'10" x 11'0"

#### BEDROOM 1

4.00m x 3.32m 13'2" x 10'11"

#### BEDROOM 2

3.58m x 2.80m 11'9" x 9'2"



### KEY

- SC = Service Cupboard
- S = Store
- ES = Ensuite
- W = Master Wardrobe
- WD = Washer Dryer
- B = Balcony
- R = Riser
- S (dotted) = Optional Storage location
- W (dotted) = Optional Wardrobe location
- (dotted) = Double Height ceiling
- I = Exposed Steel Column



Please speak to your Sales Executive regarding ceiling heights, finishes, optional wardrobes and storage.  
To increase legibility these plans have been scaled differently depending on bedroom type. Floorplan accurate from January 2023.

