



Flat 18 Adlington House, 27 Nelstrop Road, Heaton Chapel
Stockport, SK4 5LT

JohnMellor



A stunning two double bedroom retirement apartment occupying an excellent position within the impressive Adlington House development and boasting a sunny south westerly garden view with the added advantage of a balcony to enjoy it from. The apartment is located on the second floor offering peace of mind and security and there are stairs and lifts to all floors. Beautifully presented rooms offer the best of luxury living and include a spacious hall with storage and utility off, a large lounge with a dining area and patio doors onto the balcony with fantastic views, a well equipped kitchen with built in appliances, two double bedrooms, one with an en-suite shower room, and a most attractively fitted bathroom.

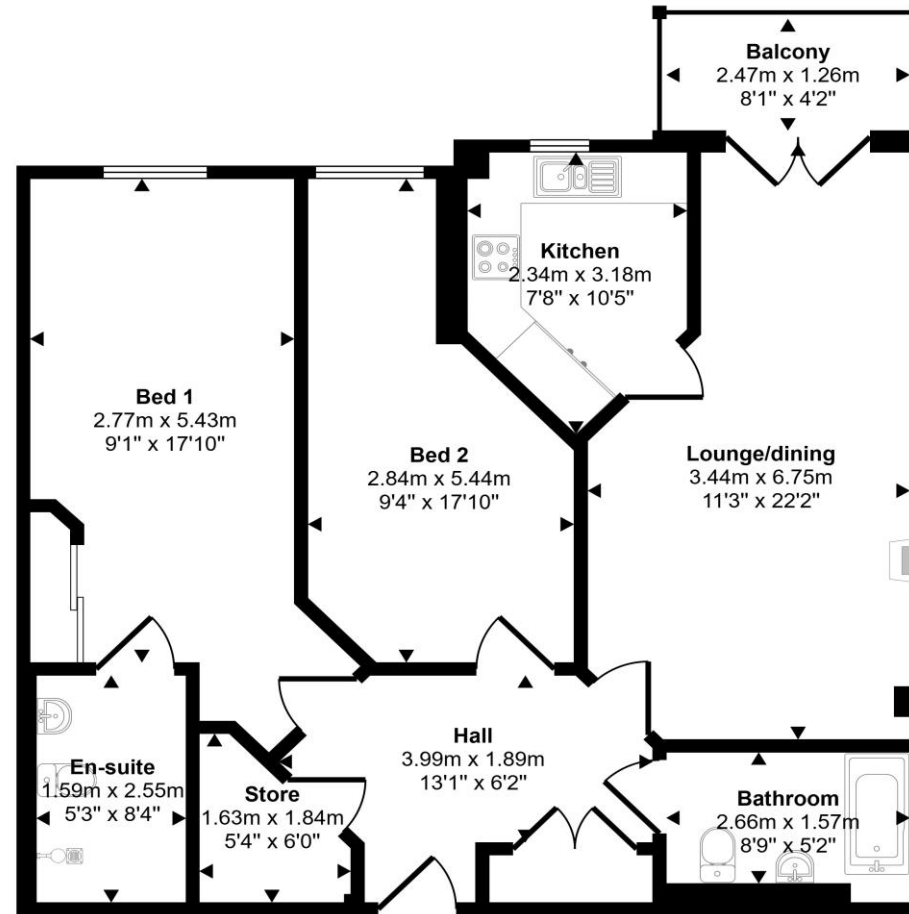


Communal areas include an onsite restaurant, hairdressers, lounges, activity rooms, spa and guest suite. There is a strong sense of community in Adlington House with a host of communal events to choose from and the development is surrounded by mature gardens and off road parking is provided. The property is leasehold for 125 years from 2013 (no ground rent) and the service charge comes to £180.78 per week (£783.40 per calendar month). Adlington House is run by the Methodist Housing Association and separate care services are available from them on request. No chain involved.



| Energy Efficiency Rating | | Current | Potential |
|----------------------------------------------------|----------|-------------------------|-----------|
| <i>Very energy efficient - lower running costs</i> | | | |
| (92 plus) | A | | |
| (81-91) | B | | |
| (69-80) | C | 79 | 86 |
| (55-68) | D | | |
| (39-54) | E | | |
| (21-38) | F | | |
| (1-20) | G | | |
| <i>Not energy efficient - higher running costs</i> | | | |
| England & Wales | | EU Directive 2002/91/EC | |

Approx Gross Internal Area
80 sq m / 857 sq ft



First Floor

This floorplan is only for illustrative purposes and is not to scale. Measurements of rooms, doors, windows, and any items are approximate and no responsibility is taken for any error, omission or mis-statement. Icons of items such as bathroom suites are representations only and may not look like the real items. Made with Made Snappy 360.

JohnMellor

182 Heaton Moor Road, Heaton Moor,
Stockport, Cheshire, SK4 4DU
Tel: 0161 442 4142
sales@john-mellor.co.uk
www.john-mellor.co.uk

IMPORTANT! These particulars and floor plans are set out as a general outline only for the guidance of intending purchasers or lessees and do not constitute part of an offer or contract, nor may they be regarded as representations. All interested parties must themselves verify their accuracy. All measurements are approximate. The agents have not tested any apparatus, equipment, fixtures, fittings or services and so cannot verify that they are in working order, or fit for purpose. The buyer is advised to obtain verification from their solicitor or surveyor. J273