



Poplar Place | Morpeth | NE61 3BR

**Offers In Excess Of £455,000**

**RMS** | Rook  
Matthews  
Sayer

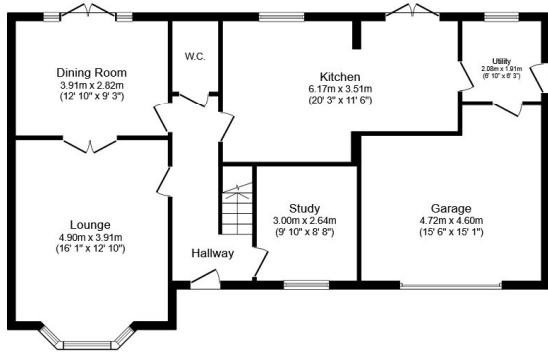
 X 4  X 2  X 3



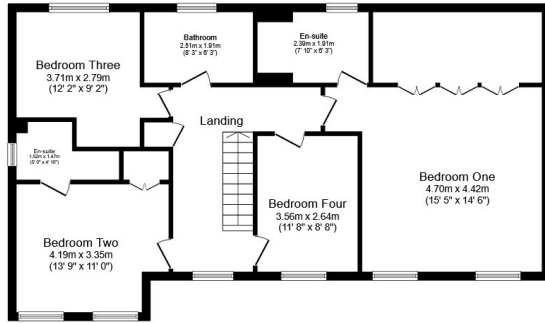
T: 01670 511 711

[morpeth@rmsestateagents.co.uk](mailto:morpeth@rmsestateagents.co.uk)

**RMS** | Rook  
Matthews  
Sayer



**Ground Floor**  
Floor area 99.1 sq.m. (1,067 sq.ft.)



**First Floor**  
Floor area 99.6 sq.m. (1,072 sq.ft.)

**Total floor area: 198.7 sq.m. (2,139 sq.ft.)**

This floor plan is for illustrative purposes only. It is not drawn to scale. Any measurements, floor areas (including any total floor area), openings and orientations are approximate. No details are guaranteed, they cannot be relied upon for any purpose and do not form any part of any agreement. No liability is taken for any error, omission or misstatement. A party must rely upon its own inspection(s). Powered by www.Propertybox.io

Score	Energy rating	Current	Potential
92+	A		92 A
81-91	B	85 B	
69-80	C		
55-68	D		
39-54	E		
21-38	F		
1-20	G		

