



Price
£400,000

Freehold

2x  1x  1x 

**Byron Road, London,
Walthamstow, E17**

OVER 60?

Secure this property
for up to **59% less!**

 **DOUGLAS
ALLEN**
Helping you move forwards



Main features

- End of terrace two bedroom property
- Large open-plan living area
- Off road parking
- Chain-free
- Close to Walthamstow Central & Lloyd Park

Accommodation

GROUND FLOOR

Living Area: 18'7 x 14'1 (5.67m x 4.30m)

Toilet

FIRST FLOOR

Bedroom 1: 18'7 x 13'8 (5.67m x 4.17m)

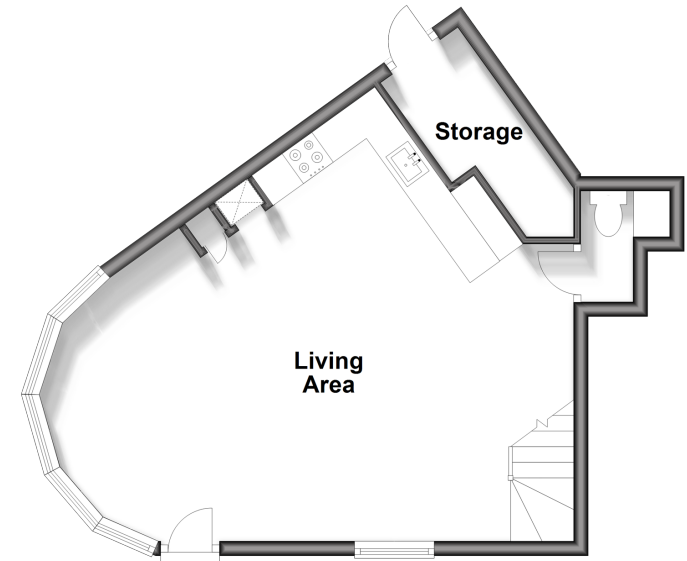
Bedroom 2: 9'7 x 9'2 (2.92m x 2.80m)

Bathroom: 8'10 x 5'9 (2.69m x 1.75m)

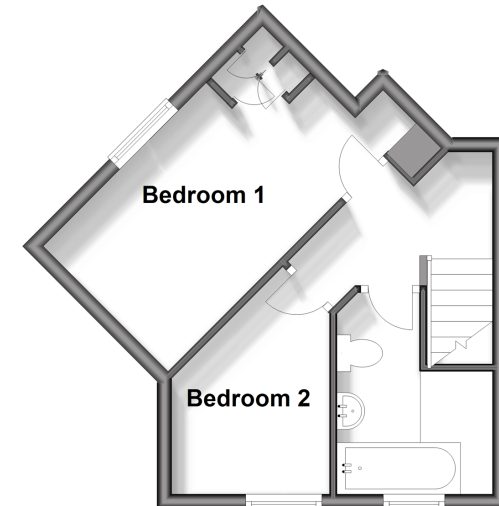
OUTSIDE

Driveway

Ground Floor
Approx. 37.8 sq. metres (407.1 sq. feet)



First Floor
Approx. 26.7 sq. metres (286.9 sq. feet)



Call Walthamstow - 020 8509 0092 ■ douglasallen.co.uk

- If buying to rent, please check if Local Authority licensing schemes apply before proceeding
- Through a Homewise Home For Life Plan people aged 60+ can secure this property for up to 59% less, by purchasing a Lifetime Lease



53117722/20260523/KS/RUM