



Crown Street

St. Albans, AL3 7BF

Semi-detached three bedroom home of circa 810 sq ft. Principal bedroom with en-suite, driveway with off-street parking and private southwest facing garden. Redbourn is a charming, popular village close to both Harpenden & St Albans.

Guide price £595,000

Crown Street

St. Albans, AL3 7BF



- Semi-detached three bedroom house
- Driveway
- Circa 810 sq ft
- Within easy reach of Harpenden & St Albans
- Southwest facing garden
- Council Tax Band E

Entrance Hall

Kitchen

13'3" x 6'4" (4.06m x 1.94m)

Lounge/Dining Room

16'10" x 13'1" (5.15m x 4.01m)

Cloakroom

Bedroom One

13'4" x 11'4" (4.08m x 3.46m)

En-suite

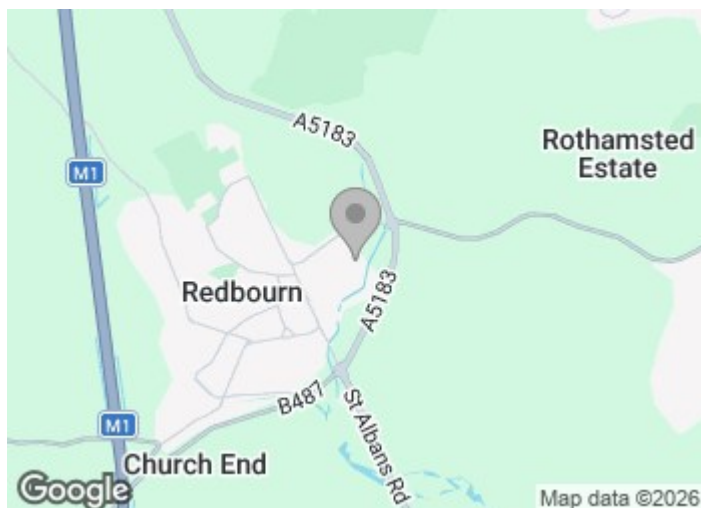
Bedroom Two

12'2" x 6'9" (3.71m x 2.08m)

Bedroom Three

8'10" x 6'2" (2.71m x 1.90m)

Bathroom

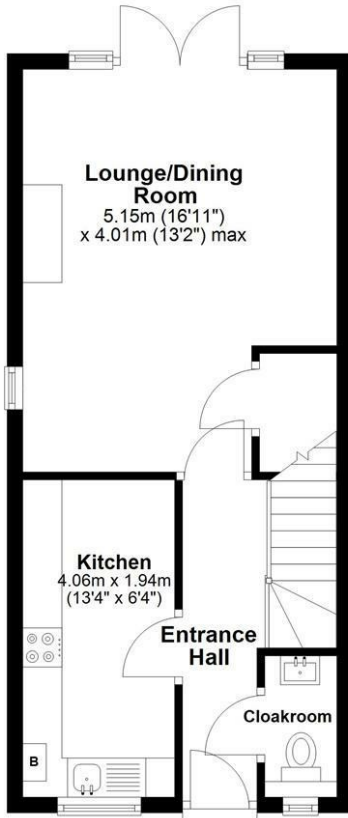




Floor Plan

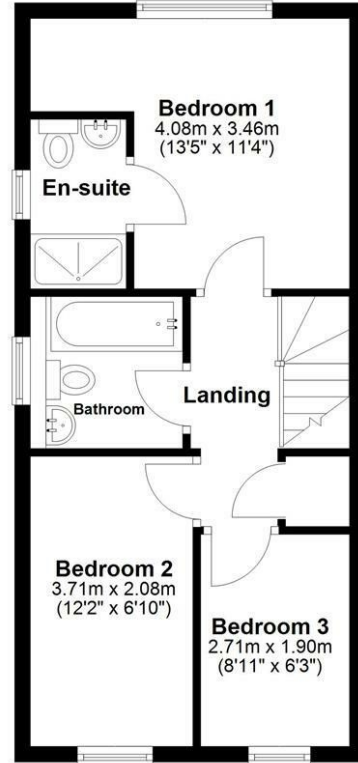
Ground Floor

Approx. 37.3 sq. metres (401.8 sq. feet)



First Floor

Approx. 37.9 sq. metres (408.3 sq. feet)



Total area: approx. 75.3 sq. metres (810.1 sq. feet)

Sketch layout only. Not to scale. Plan produced for Whittaker & Co.

Plan produced using PlanUp.

These particulars, whilst believed to be accurate are set out as a general outline only for guidance and do not constitute any part of an offer or contract. Intending purchasers should not rely on them as statements of representation of fact, but must satisfy themselves by inspection or otherwise as to their accuracy. No person in this firm's employment has the authority to make or give any representation or warranty in respect of the property.

