



## Old Kent Road, SE1

£325,000

Beautifully refurbished throughout, this top-floor flat is set within an attractive Victorian mansion block and benefits from elegant sash windows, plantation shutters, solid oak flooring and high ceilings.

Perfectly positioned within walking distance of Borough and Elephant & Castle stations (Zone 1), with access to the Northern and Bakerloo lines. With frequent bus routes into Central London and an abundance of amenities on your doorstep, making this location both convenient and well-connected.

### Features

- Victorian Mansion Flat
- Newly Refurbished Throughout
- Brand-New Kitchen
- Solid Oak Worktops
- New Electrics & Plumbing
- High Ceilings & Sash Windows
- Communal Roof Terrace
- Chain Free Sale





## Old Kent Road, SE1

The property comprises a generous living room, a high-spec brand-new kitchen with solid oak worktops and Mandarin Stone tiling, and a well-proportioned double bedroom with built-in wardrobes.

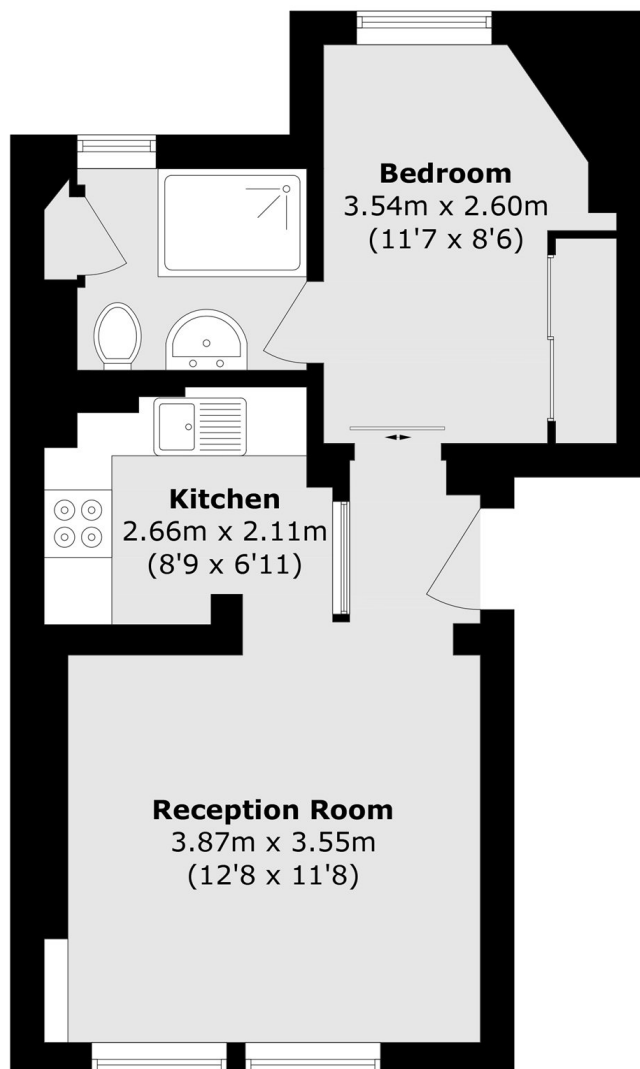
The stylish three piece, en-suite bathroom features a stylish walk-in shower, Carrera marble tiles, Abi Interiors fittings, and underfloor heating for added comfort.

Further benefits include brand-new electrics and plumbing, a new boiler, and solid oak flooring throughout the property. All walls have been finished in Farrow & Ball paint, creating a cohesive and high-quality finish throughout.





# Old Kent Road, London, SE1



Total area (approx.): 35.8 sq. m (385.3 sq. ft)