

Property ref: 178328

Maine Street, Reading, RG2 6AZ

£2,600 PCM

HASLAM'S
Lettings



A stunning four bedroom townhouse available in the exclusive sought after Green Park development. This property is surrounded by lakeside walks, local amenities and shops.

Reading Borough Council tax band E.

Water supply: Mains

Drainage info: Mains

Electricity supply: Mains

Gas supply: Mains

Broadband/Mobile Info: Connections available. For an indication of specific speeds and supply of Broadband and Mobile, we advise applicants go to the Ofcom website Broadband and Mobile Coverage Checker.

- Four bedrooms; Master with en-suite
- Family bathroom with separate shower and bath
- Fully fitted kitchen
- Two allocated parking spaces
- Gas central heating; EPC rating B
- Furnished; Managed by HASLAM'S

Available 11/05/2026

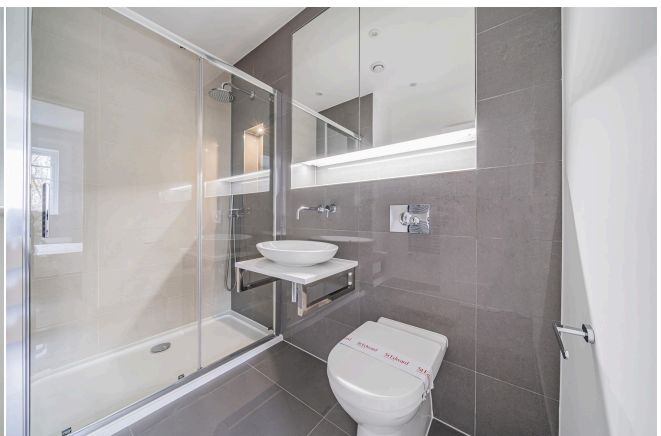
*Fees For Assured Shorthold Tenancies: when you rent a property from us you will be required to pay a sum equivalent to one weeks' rent for a holding deposit. Upon successful application, this amount will be off set against your first months' rent. You will also be required to pay a security deposit equivalent to 5 weeks' rent which will be held and protected in line with Deposit legislation. For more information about our fees please visit: www.haslams.net

Fees for all other tenancies (Non Housing Act Tenancies / Company Lets): when you rent a property from us we will charge you a one-off fee per property. This charge is the equivalent of 15 days of the monthly rental charge (+VAT) with a minimum fee of £450 (inc.VAT) up to a maximum of £650 (inc.VAT). Other fees may apply depending on your circumstances.

0118 960 1055

lettings@haslams.net www.haslams.net

Haslams Estate Agents Ltd, 159 Friar Street, Reading, Berkshire, RG1 1HE

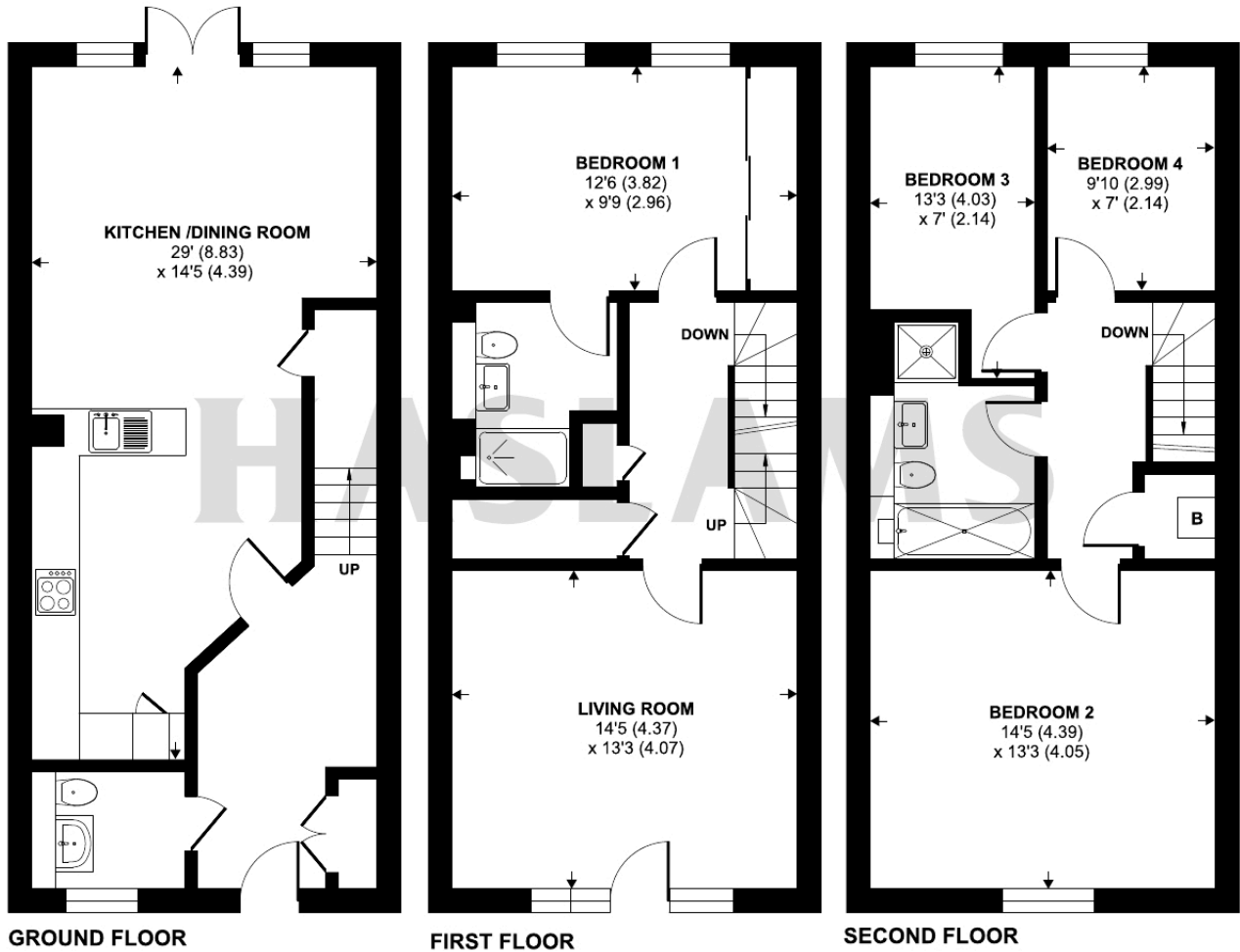




Maine Street, Reading, RG2

Approximate Area = 1485 sq ft / 137.9 sq m

For identification only - Not to scale



 Floor plan produced in accordance with RICS Property Measurement 2nd Edition, incorporating International Property Measurement Standards (IPMS2 Residential). © n̄checom 2026. Produced for Haslam's. REF: 1429249