



Bush & Co.



28 Argyle Street, Cambridge, CB1 3LR

Guide Price £525,000 Freehold



Energy Rating Band D

An end-of-terrace house, of brick elevations under a slate tiled roof, offering well-planned accommodation arranged over 2 floors measuring nearly 900 SQ FT, offering open plan living, 2 double bedrooms, a first-floor bathroom, a garden to the rear and off-street parking, being sold with no onward chain.

In brief, the accommodation consists; a welcoming entrance hallway with stairs rising to the first floor. The open plan living/dining room has dual aspect windows, with a pretty bay to the front aspect. There is a wood-burning stove and original exposed floorboards. The kitchen has a range of matching cabinets and drawers, ample work surfaces, an integrated dishwasher and plumbing for various appliances. At the rear of the home is a handy storage area with a glazed door to the rear garden, off this is a WC with a hand-wash basin.

The first floor has 2 double bedrooms off a central landing with access to the loft space, which is partly boarded, and there is a storage cupboard. Bedroom 1 is located at the front of the house, a large double, spanning the width of the property. There are exposed original floorboards and a decorative cast-iron fireplace. Bedroom 2 again is a double room with a built-in cupboard and a cast-iron fireplace. The bathroom has a bath with a shower over, WC, hand wash basin and airing cupboard.

Outside - The property is set back from the road, behind a low level brick wall. The rear garden has a patio area; the remainder is laid to lawn. There is off-street parking on hard-standing tiles, access from double wooden gates, and a further wooden gate gives access onto Swanns Terrace.

Agents' Note: The house has suffered lateral movement during its history. There have been remedial works, including pressure plates at the first-floor level, lateral restraint straps within the loft, and roof bracing timbers. A structural engineer confirms these measures have been effective and that there was no evidence of recent or progressive movement at the time of inspection, as of 2021.

Argyle Street is quietly nestled off Mill Road in the heart of Romsey Town, offering easy access to all the independent shops and cafes that Mill Road has become so popular for. The mainline railway station is just a few minutes' walk or cycle, whilst the historic city centre is around 1 mile away, and the Addenbrookes Hospital Biomedical Campus is around 2 miles away. Residents of Romsey Town are spoilt for choice when it comes to local facilities, and the area has a superb community feel.



Exceptional service in Cambridge and the surrounding villages

Bush & Co is a leading independent estate agency that takes pride in providing the friendly, professional advice you would expect from a long established company combined with the dynamic efficiency of a contemporary, progressive practice.

At Bush & Co we value your custom as highly as we value our own integrity and reputation. Please contact us for a confidential discussion and impartial advice on how we can deliver a truly bespoke service which we are sure will exceed your expectations.

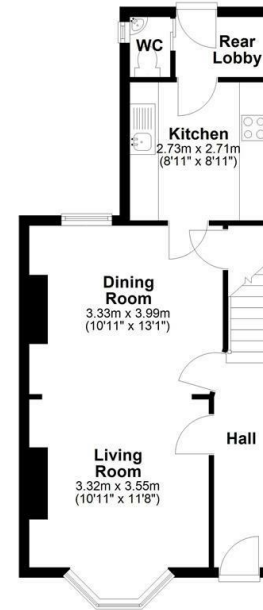
- * Honest valuations with a true market assessment
- * Bespoke individual marketing
- * Premium and feature listing status
- * Dedicated sales progression
- * Social media campaigns
- * Professional quality photography
- * Media tours

Contact us for a free valuation of your property
01223 246262
sales@bushandco.co.uk

Established. Independent. Passionate

Ground Floor

Approx. 43.1 sq. metres (464.1 sq. feet)



First Floor

Approx. 40.0 sq. metres (430.8 sq. feet)



Total area: approx. 83.1 sq. metres (894.9 sq. feet)

Drawings are for guidance only
Plan produced using PlanUp.

Further Information

Tenure - Freehold

Council Tax - Band C

Fixtures & Fittings - Unless specifically mentioned in these particulars all fixtures and fittings are expressly excluded from the sale

Viewing - By Appointment

169 Mill Road

Cambridge

Cambridgeshire

CB1 3AN

www.bushandco.co.uk

