



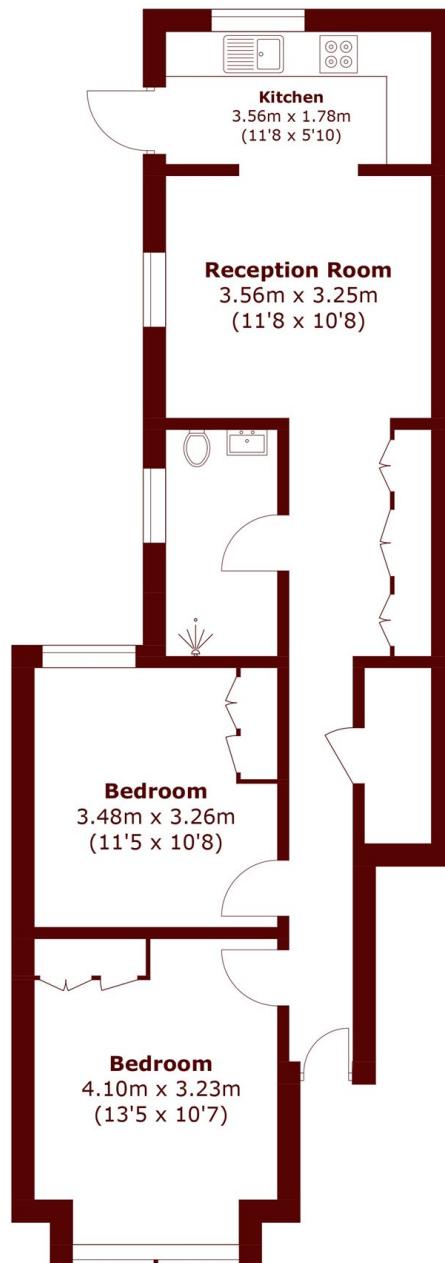
WILLOW VALE, W12

£600,000

Beautifully finished two-bedroom ground floor maisonette, presented to an exceptional standard throughout. This stylish home boasts a bright and spacious open-plan kitchen/reception room to the rear, perfect for both

Two double bedrooms

STEP INSIDE WILLOW VALE



Total area (approx.): 62.9 sq. m (677.0 sq. ft)

Askew Road
020 8102 0123

Energy Rating: We aim to make our particulars both accurate and reliable. However, they are not guaranteed; nor do they form part of an offer or contract. If you require clarification on any points then please contact us, especially if you're traveling some distance to view. Please note that appliances and heating systems have not been tested and therefore no warranties can be given as to their good working order

MARSH &
PARSONS