



## FIELDING ROAD, W4

£4,250 per month

Four double bedrooms  
Two bathrooms  
Modern kitchen  
Split level property  
Private garden  
Energy rating: c

@marshandparsons  
marshandparsons.co.uk

MARSH &  
PARSONS



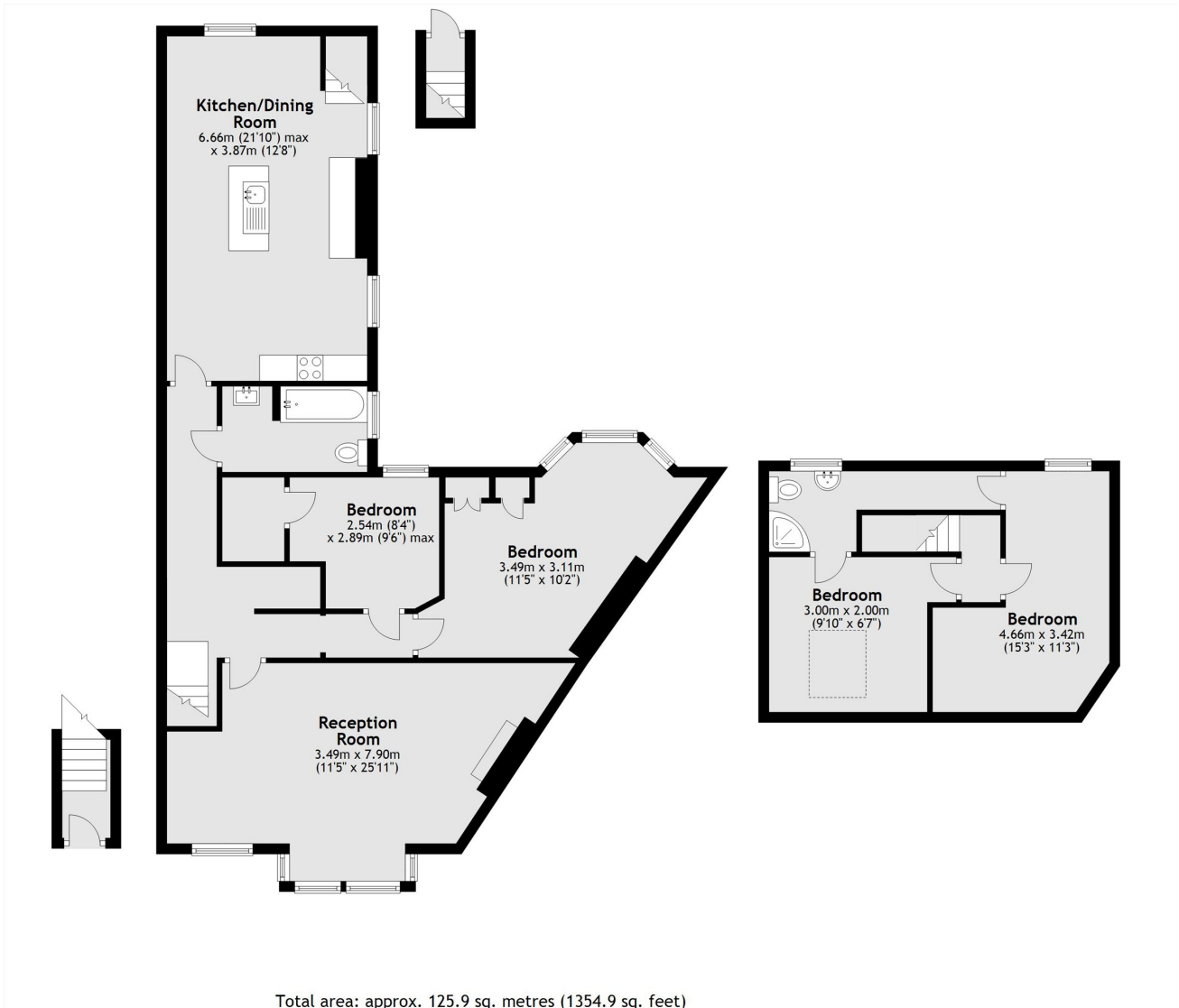
# ABOUT THE PROPERTY

This immaculately presented four-bedroom split-level maisonette, featuring its own private entrance and a secluded private garden, set within an attractive period building on the highly sought-after Fielding Road. Spread across two well-designed floors, the property provides a generous reception room, modern kitchen with a central island, four spacious bedrooms with excellent fitted storage, and two contemporary bathrooms.

Fielding Road is a picturesque, tree-lined street situated within the sought-after Bedford Park conservation area. A short walk from Turnham Green Underground station and the excellent selection of boutiques, cafés, restaurants.



# STEP INSIDE FIELDING ROAD



Chiswick  
020 8629 0900

Energy Rating: C We aim to make our particulars both accurate and reliable. However, they are not guaranteed; nor do they form part of an offer or contract. If you require clarification on any points then please contact us, especially if you're traveling some distance to view. Please note that appliances and heating systems have not been tested and therefore no warranties can be given as to their good working order

MARSH &  
PARSONS