



## CLANRICARDE GARDENS, W2

£500,000

Approx. 3.21m Ceiling Height

Share Of Freehold

Built In Storage

Second Floor

Chain Free



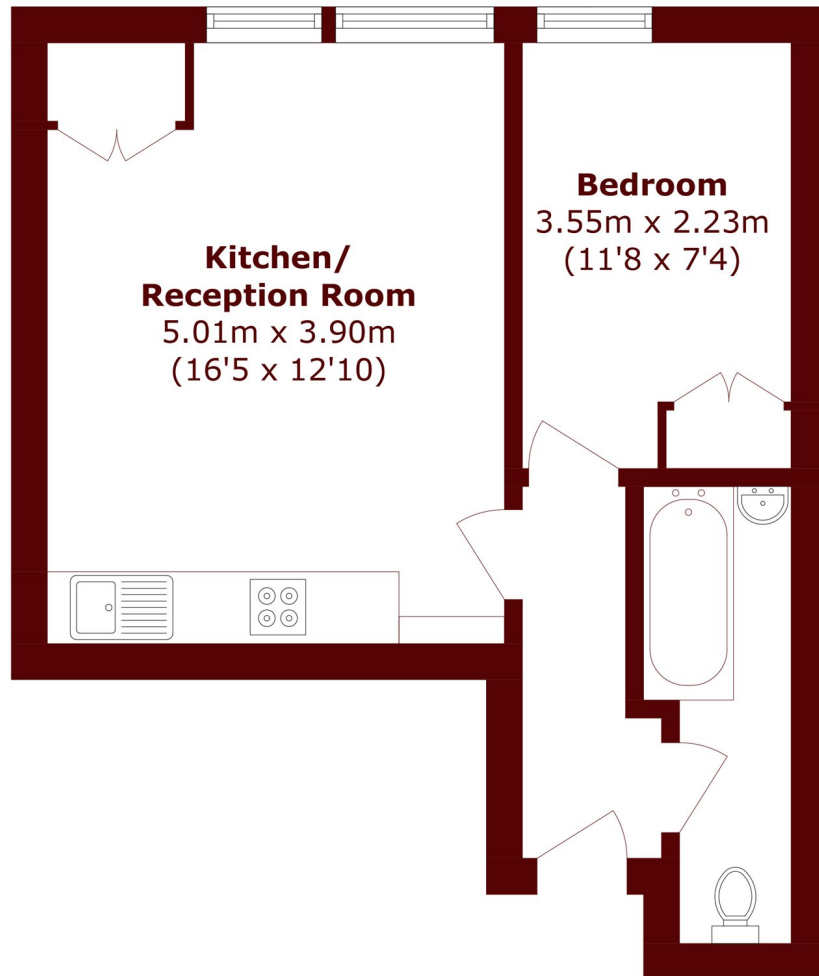
# ABOUT THE PROPERTY

An elegant one-bedroom Victorian conversion positioned opposite Kensington Palace Gardens, featuring high ceilings, sash windows, original cornicing, and exceptional natural light on peaceful Clanricarde Gardens.

Located on Clanricarde Gardens, the apartment is close to Notting Hill Gate Station (Central, District, Circle lines), Hyde Park, Portobello Road, and the shops, cafés, and restaurants of Westbourne Grove.



# STEP INSIDE CLANRICARDE GARDENS



Total area (approx.): 35.7 sq. m (384.2 sq. ft)

Notting Hill  
020 7313 2890

Energy Rating: C We aim to make our particulars both accurate and reliable. However, they are not guaranteed; nor do they form part of an offer or contract. If you require clarification on any points then please contact us, especially if you're traveling some distance to view. Please note that appliances and heating systems have not been tested and therefore no warranties can be given as to their good working order

MARSH &  
PARSONS