



the
ANDERSON
Group exp

Eastland Close, West Cross, Swansea, SA3 5NU

Offers Over £450,000

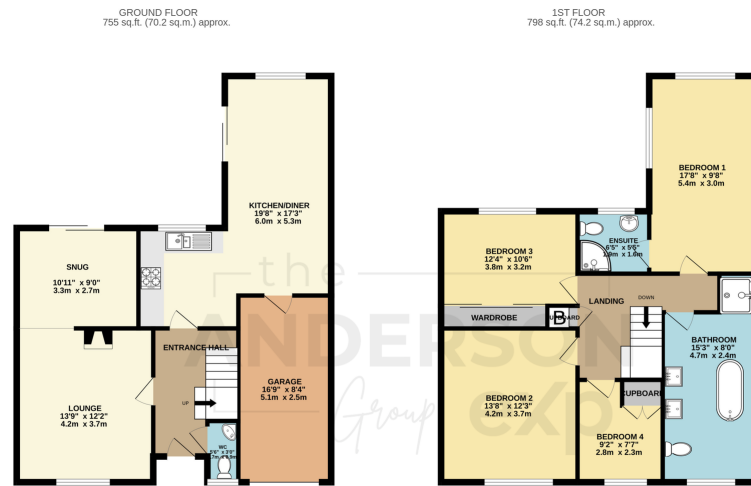
🛏️ 4 🚗 2 🚗 2



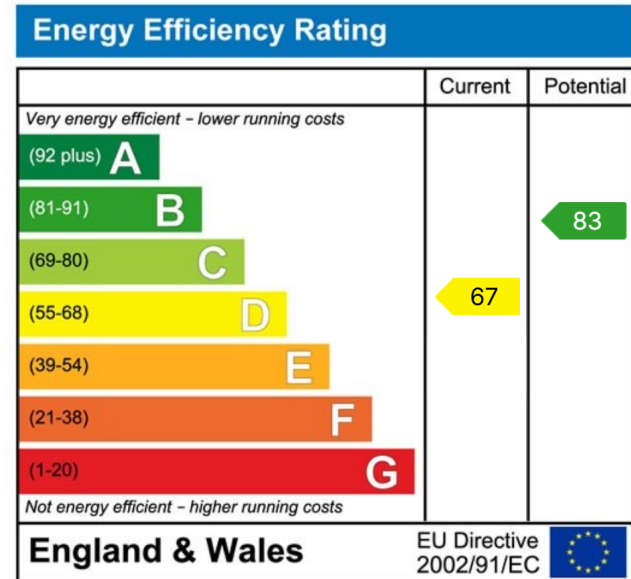
- Beautifully Presented Four-Bedroom Detached Family Home
- Two Versatile Reception Rooms Including Snug/Playroom
- Master Bedroom With En-Suite Shower Room
- Single Garage And Driveway Parking
- Walking Distance To Langland Bay And Mumbles Village
- Sought-After Cul-De-Sac Location In West Cross
- Spacious Kitchen/Diner With French Doors To Garden
- Well-Appointed Five-Piece Family Bathroom
- Enclosed Rear Garden With Decked Area
- Freehold | Council Tax Band F | 1,553 Sq Ft



A stunning four-bedroom detached family home, extended and beautifully presented throughout, nestled in a quiet cul-de-sac in the highly desirable coastal village of West Cross. Offering generous and flexible accommodation, the property features two reception rooms, an impressive kitchen/diner with sliding doors to the rear garden, and a master bedroom complete with en-suite shower room. A five-piece family bathroom, single garage, tarmac driveway, and an enclosed rear garden with decked entertaining area further enhance this exceptional home. With Langland Bay, Mumbles village, and excellent local amenities all within easy reach, this is a rare opportunity to acquire a truly special family home in one of Swansea's most sought-after locations. Freehold.



Whilst every attempt has been made to ensure the accuracy of the floorplan contained here, measurements of doors, windows, rooms and any other items are approximate and no responsibility is taken for any error, omission or mis-statement. This plan is for illustrative purposes only and should be used as such by any prospective purchaser. The services, systems and appliances shown have not been tested and no guarantee as to their operability or efficiency can be given.
Made with Metropix ©2026



01792 805075

Swansea, Mumbles & Gower

sales@melanieanderson.co.uk