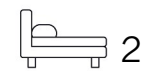




Living
made
better

Fairwater House
Parsons Green, SW6 2YE



Asking Price £1,000,000

Fairwater House, Parsons Green, SW6 2YE

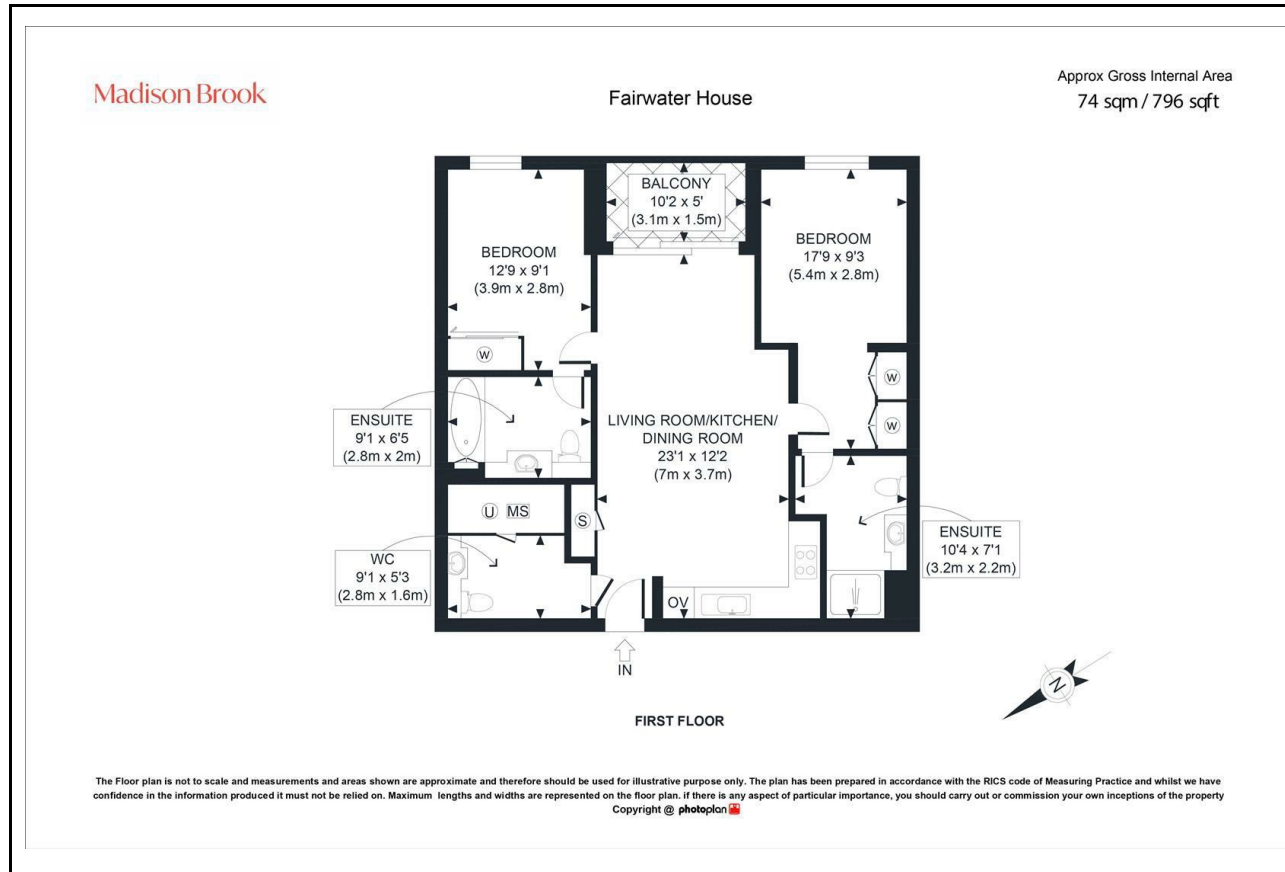
Madison Brook

Property Summary

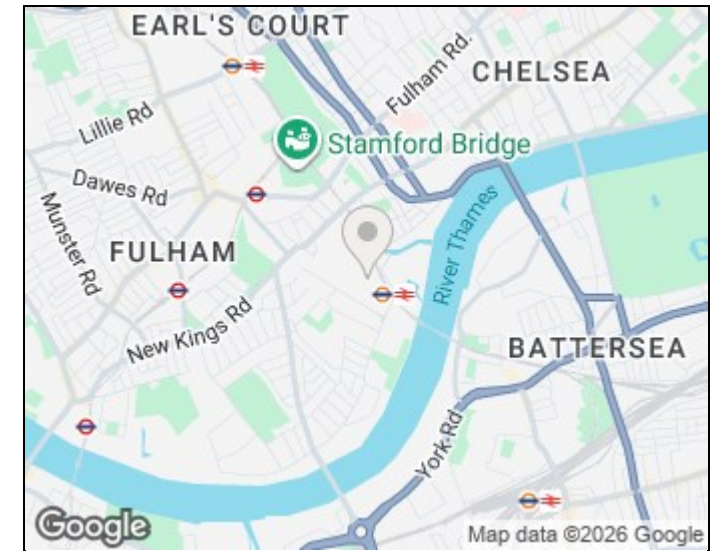
Located in the prestigious Chelsea Creek development, this luxurious two-bedroom, two-bathroom apartment offers 796 sq. ft. of elegant, contemporary living. The property features a spacious open-plan kitchen and living area, two en-suite bedrooms, an additional guest WC, and a private balcony. Residents benefit from a 24-hour concierge, gym, swimming pool, and beautifully landscaped communal areas. With off-street parking and easy access to Chelsea Harbour, Imperial Wharf, and the River Thames, this home combines modern comfort with an exceptional riverside location.

Service charge: £3,003.84 pa | Ground rent: £450 pa | Lease: 984 years remaining

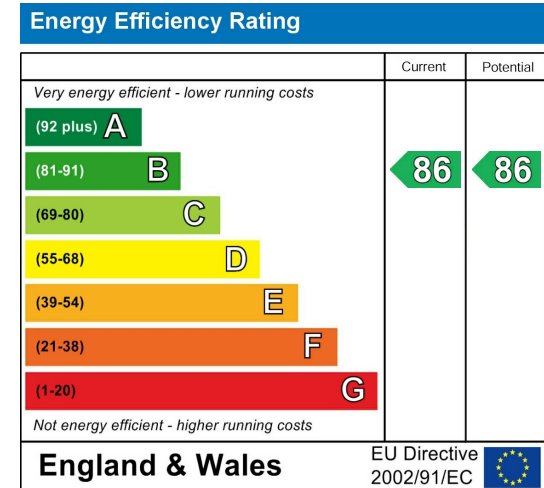
Floorplan



Area Map



Energy Efficiency Graph



These particulars, whilst believed to be accurate are set out as a general outline only for guidance and do not constitute any part of an offer or contract. Intending purchasers should not rely on them as statements of representation of fact, but must satisfy themselves by inspection or otherwise as to their accuracy. No person in this firm's employment has the authority to make or give any representation or warranty in respect of the property.

181 Chiswick High Road, Chiswick, London, W4
2DR

Tel: 020 3946 6600 Email:
chiswick@madisonbrook.com
<https://madisonbrook.com/>