



22 John Amore Lane

Ashford, TN23 3SY

Price £225,000

An immaculately presented apartment on the popular Repton Park development, offered for sale with no onward chain.

The notably light and airy accommodation comprises a contemporary open plan kitchen/living space, two bedrooms, en suite and family bathroom. Allocated parking can be found to the rear of the property whilst further benefits including gas central heating, double glazing and a private balcony.

Leasehold - 115 years remaining
Annual Management Charge £1,870.
Annual Ground Rent - £180.

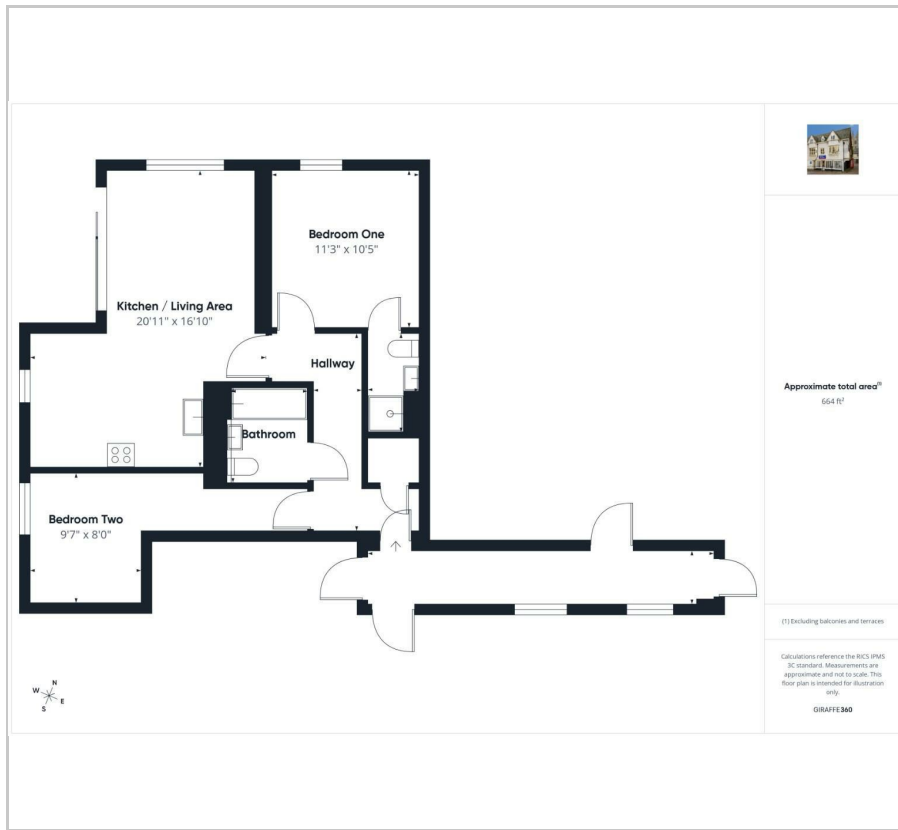
Viewing

Please contact our Ashford Office on 01233 646411 if you wish to arrange a viewing appointment for this property or require further information.

- CONTEMPORARY APARTMENT
- OFFERED FOR SALE WITH NO CHAIN
- SECOND FLOOR
- TWO BEDROOMS
- EN SUITE & FAMILY BATHROOM
- PRIVATE BALCONY
- ALLOCATED PARKING
- SHORT WALK TO LOCAL SCHOOLS, CAFE'S AND TRANSPORT LINKS
- EPC RATING - B (85)
- LEASEHOLD - 115 YEARS REMAINING



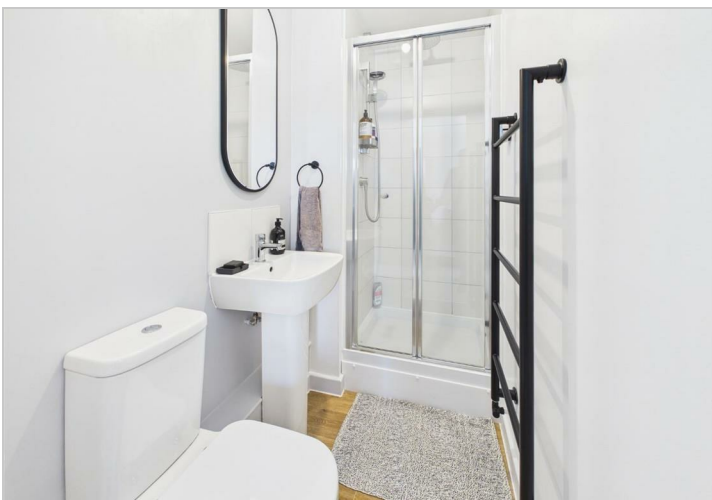
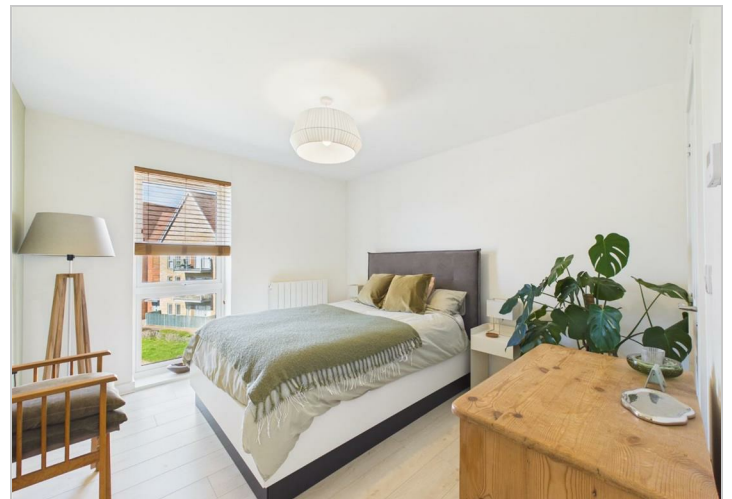
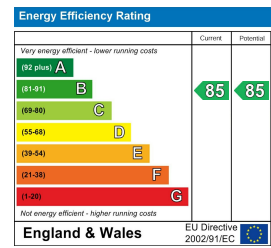
Floor Plan



Area Map



Energy Efficiency Graph



These particulars, whilst believed to be accurate are set out as a general outline only for guidance and do not constitute any part of an offer or contract. Intending purchasers should not rely on them as statements of representation of fact, but must satisfy themselves by inspection or otherwise as to their accuracy. No person in this firm's employment has the authority to make or give any representation or warranty in respect of the property.