

## Comeragh Road, W14

£495,000

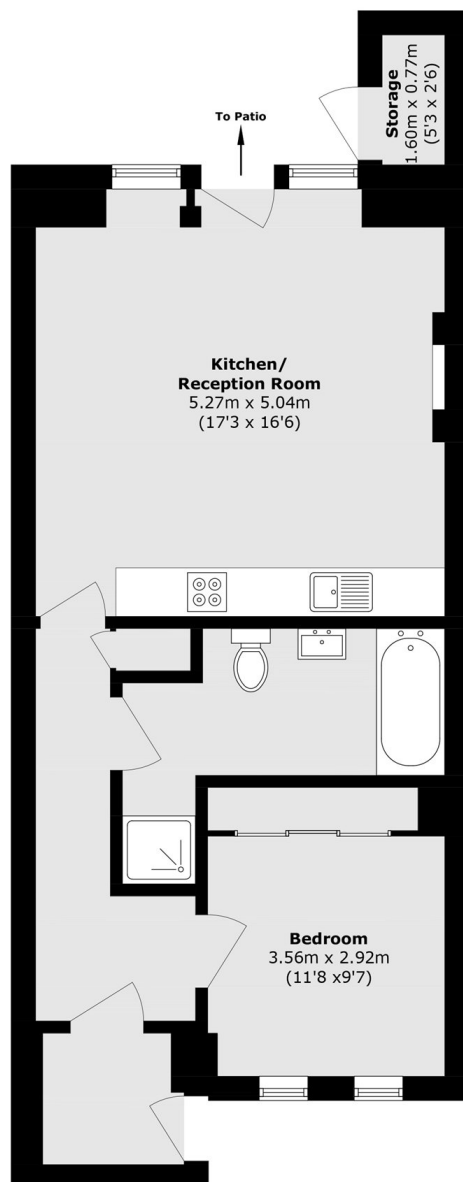
A lovely and large one bedroom apartment with a private and sunny patio garden, which backs onto the Queens Tennis Club. The property boasts nearly 600 sq. Ft of internal space with good natural light throughout and is offered with no onward chain.

Comeragh Road is a sought-after residential street in the centre of West Kensington & Barons Court. The area provides excellent transport links, amenities is popular with young professionals. High Street Kensington, Kensington Olympia and Hammersmith are all within walking distance.

### Features

- One Bedroom
- Private Entrance
- Long Leasehold
- Open Plan
- Close To Tube
- Garden

# Comeragh Road, London, W14



Total area (approx.): 57.1 sq. m (614.6 sq. ft)

External Storage area(approx.): 1.22 sq. m (13.2 sq. ft)