



## Elizabeth Mews, NW3

£925,000

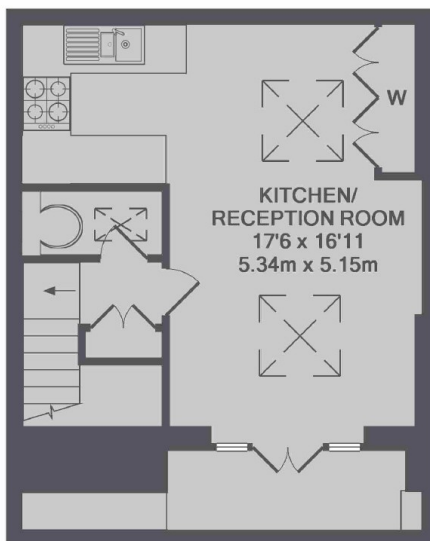
Duplex apartment on a cobbled street tucked away in prime Belsize Park. Over the top two floors with two bedrooms, shower room and family bathroom in addition to an open plan reception room with private balcony.

Popular location amongst excellent local shops, cafés and restaurants. Walking distance to Belsize Park station, lots of local amenities and the open parkland of Primrose Hill.

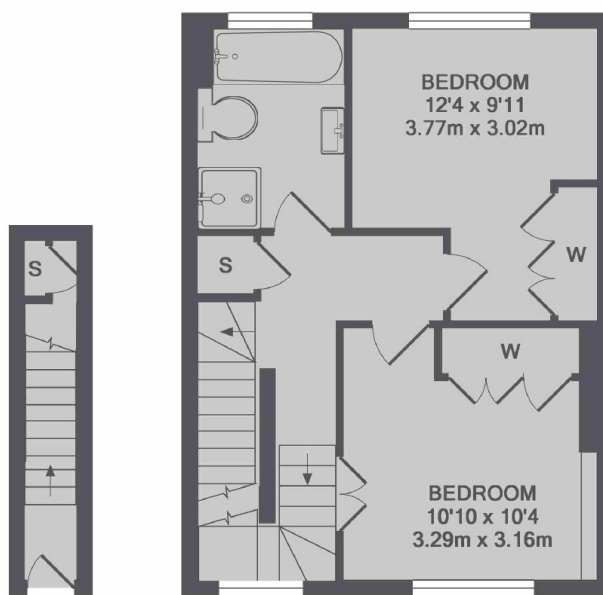
### Features

- Duplex Apartment
- Two Bedrooms
- Private Balcony
- Open Plan Reception
- Prime Belsize Park
- Oak Flooring

# Elizabeth Mews, London, NW3



2ND FLOOR



GROUND FLOOR

1ST FLOOR

TOTAL APPROX. FLOOR AREA 789 SQ.FT. (73.3 SQ.M.)