



Chartwell House, Prince of Wales Drive Offers Over £700,000

Discover contemporary London living at its finest in this beautifully presented one-bedroom apartment set within the prestigious Prince of Wales Drive development in Battersea. This elegant home combines modern design with superb amenities, offering a perfect retreat moments from the vibrant lifestyle of Battersea and the green expanse of Battersea Park.

Flooded with natural light, the spacious open-plan living and dining area features high-quality finishes and floor-to-ceiling windows, creating an inviting space ideal for both relaxing and entertaining. The sleek, fully integrated kitchen offers premium appliances and ample storage, perfect for home cooking or hosting friends.

The generous double bedroom provides a calm and stylish sanctuary, complete with built-in wardrobes, while the contemporary bathroom showcases luxury fittings and a soothing, spa-like feel. Additional features include underfloor heating, excellent energy efficiency, and a private balcony.

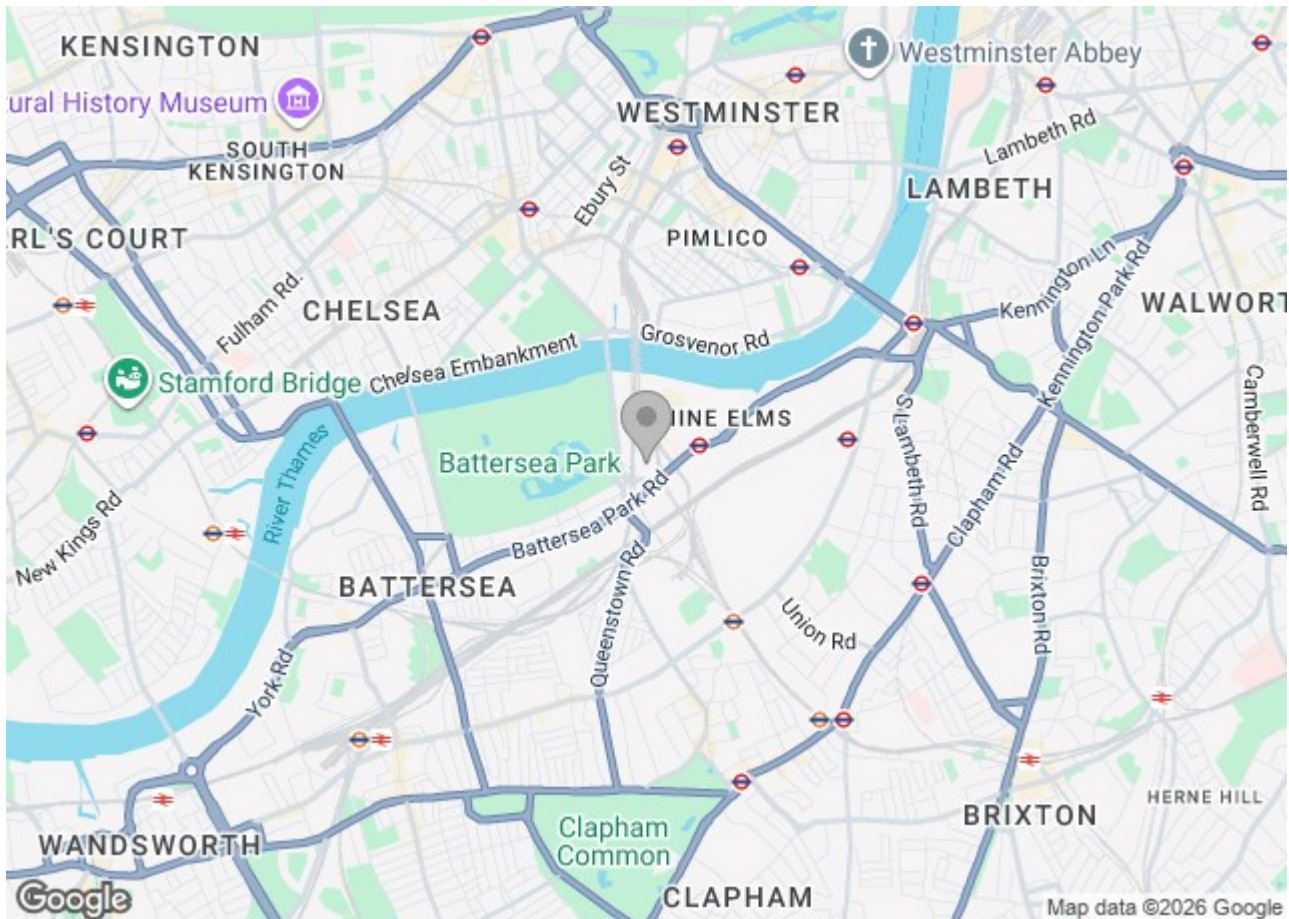
Residents of Prince of Wales Drive enjoy access to exceptional on-site amenities, including a 24-hour concierge, gym, pool, residents' lounge, landscaped gardens, and secure cycle storage. With Battersea Power Station, the Northern Line extension, and a wealth of cafés, bars, restaurants, and riverside walks all within easy reach, this location offers the best of connected London living.

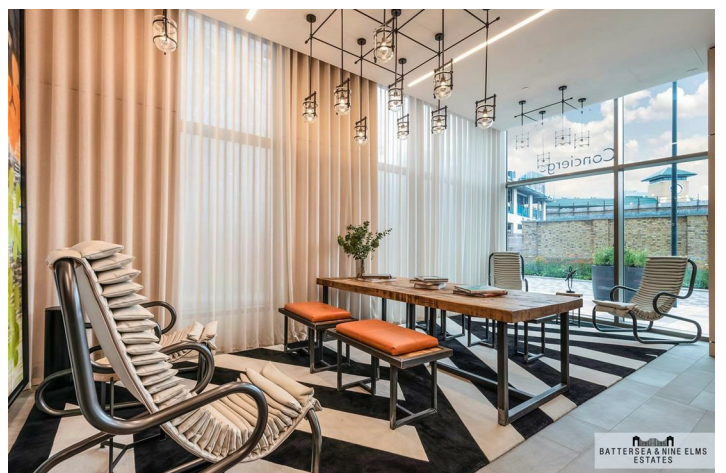
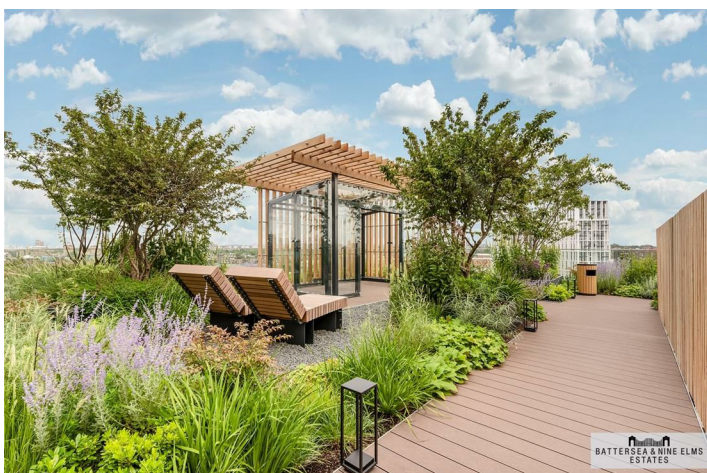
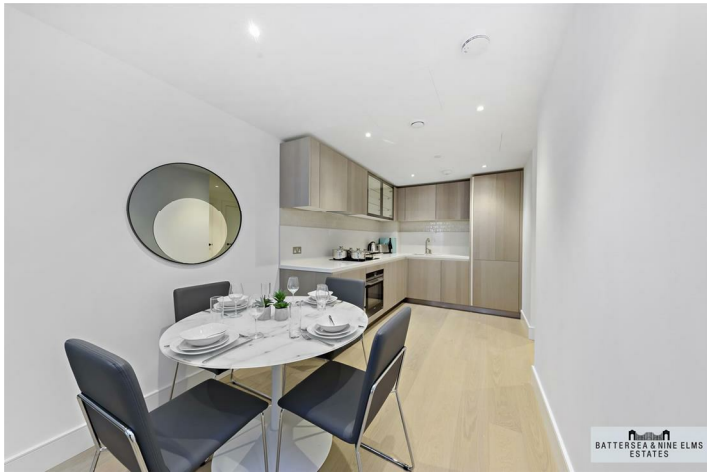
Ideal for first-time buyers, investors, or those seeking a stylish city base, this property delivers luxury, comfort, and convenience in one of South West London's most desirable new neighbourhoods.

Palmer Road London



- One double bedroom
- Communal garden terrace
- Private balcony
- Residents swimming pool & spa
- Excellent transport links





Chartwell House,
Prince of Wales Drive, SW10
Approximate Gross Internal Area
54.02 sq m / 581 sq ft

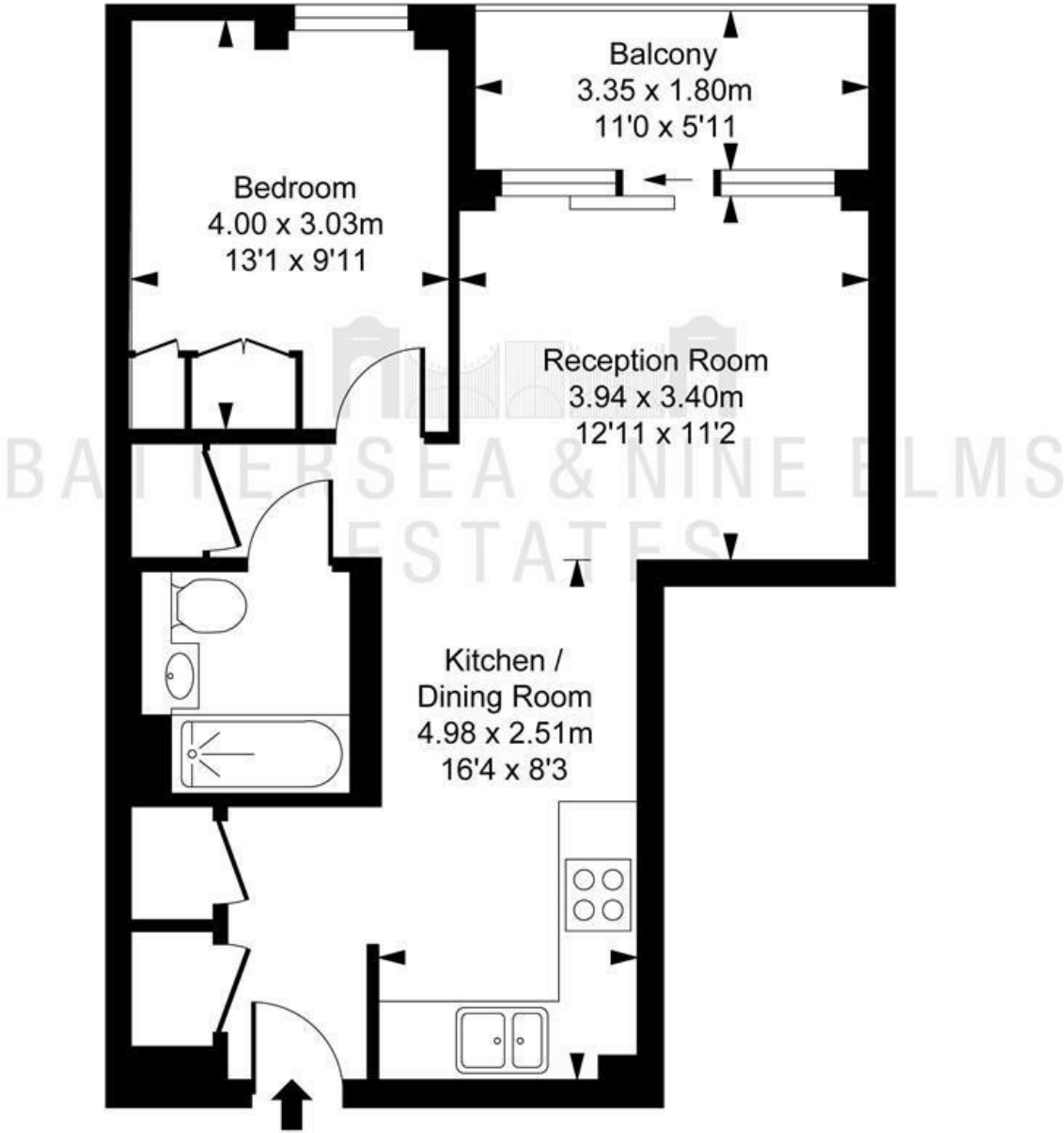


ILLUSTRATION FOR IDENTIFICATION PURPOSES ONLY
ALL MEASUREMENTS AND AREA FIGURES SUPPLIED BY OTHERS. ACCURACY IS NOT GUARANTEED.
THIS PLAN MUST NOT BE REPRODUCED BY ANY OTHER PERSON WITHOUT PERMISSION

These particulars, whilst believed to be accurate are set out as a general outline only for guidance and do not constitute any part of an offer or contract. Intending purchasers should not rely on them as statements of representation of fact, but must satisfy themselves by inspection or otherwise as to their accuracy. No person in this firm's employment has the authority to make or give any representation or warranty in respect of the property.

