



OVER 60?

Secure this property
for up to **59% less!**

Price

£400,000

Freehold

3x  2x  1x 

**Westmeads Road,
Whitstable, Kent, CT5**

Wards
Helping you move forwards

Accommodation

GROUND FLOOR

Entrance Hall

Lounge: 14'1" x 11'1" (4.30m x 3.38m)

Kitchen/Diner: 15'2" x 9'1" (4.63m x 2.77m)

Conservatory : 11'9" x 8'7" (3.58m x 2.62m)

FIRST FLOOR

Landing

Bedroom 2 : 15'3" x 9'11" (4.65m x 3.02m)

Bedroom 3 : 9'3" x 8'5" (2.82m x 2.57m)

Bathroom

SECOND FLOOR

Bedroom 1 : 15'6" x 10'5" (4.73m x 3.18m)

En Suite Shower Room

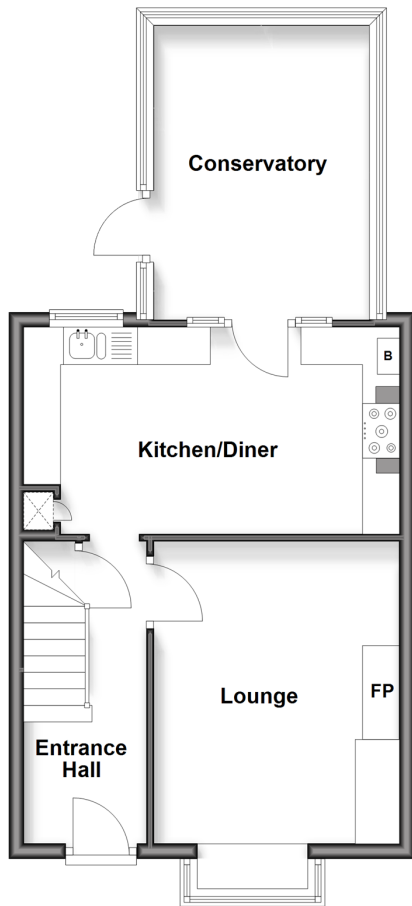
OUTSIDE

Font Garden

Rear Garden

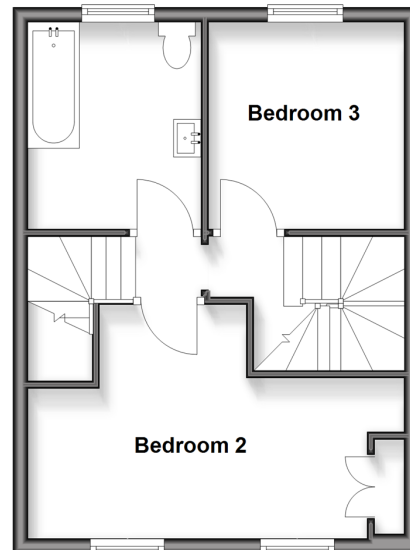
Ground Floor

Approx. 47.3 sq. metres (508.8 sq. feet)



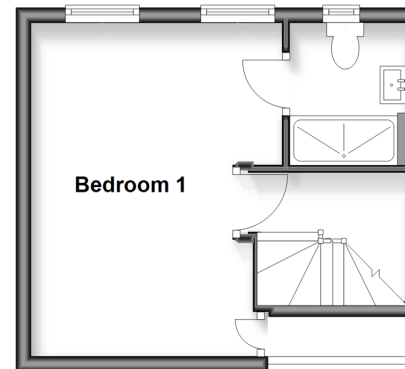
First Floor

Approx. 35.1 sq. metres (377.4 sq. feet)



Second Floor

Approx. 21.2 sq. metres (227.7 sq. feet)





Main features

- **Dormer loft conversion creating a spacious primary bedroom and en-suite shower room**
- **Two additional first-floor bedrooms, ideal for families**
- **Charming lounge with window seat**
- **Conservatory offering extra living space and access to the garden**
- **Prime location close to the harbour and a popular primary school**



Nearest Schools

Primary Schools: St Mary's Catholic Primary 0.2 miles, Whitstable and Seasalter Endowed C of E Junior School 0.3 miles, Whitstable Junior School 0.4 miles

Secondary Schools: The Whitstable School 0.6 miles



Transport Information

Train Stations: Whitstable 0.1 miles, Chestfield & Swalecliffe 1.4 miles, Herne Bay 3.6 miles



Address

Westmeads Road, Whitstable, Kent, CT5



Directions

For directions to this property please contact us.



Wards
Helping you move forwards

Call Whitstable Branch 01227 772272 ■ wardsofkent.co.uk



- Legal advice should be taken to verify fixtures/fittings, planning, alterations and/or lease details
- Appliances & services are untested, dimensions are approximate and floor plans are not to scale
- Through a Homewise Home For Life Plan people aged 60+ can secure this property for up to 50% less, by purchasing a Lifetime Lease



12033833/20251208/AR/NF