

4 Birch Road, Tillingham

£350,000

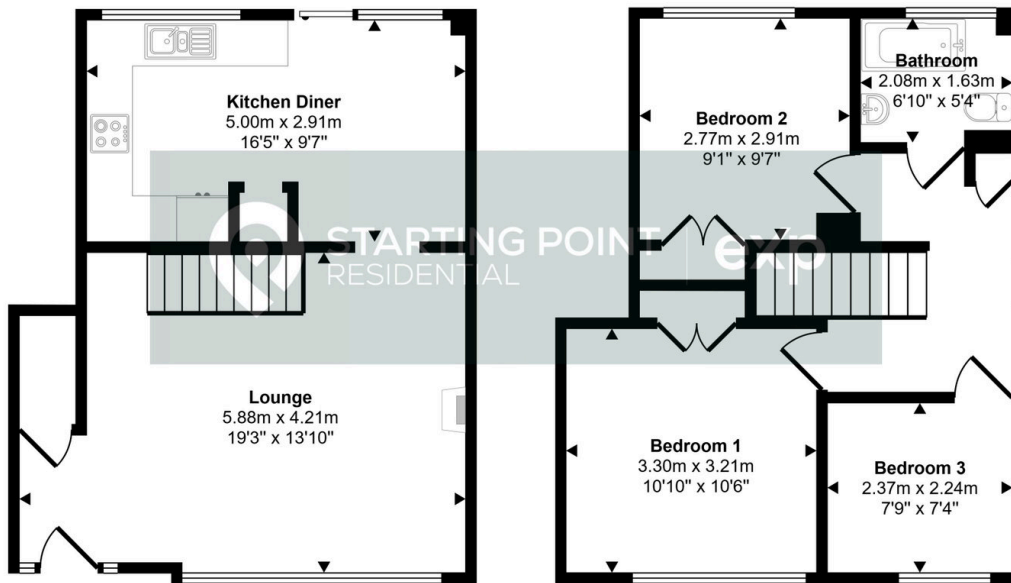
3 2 1



Key Features

-
-
-
-
-

Approx Gross Internal Area
78 sq m / 842 sq ft



Ground Floor
Approx 39 sq m / 421 sq ft

First Floor
Approx 39 sq m / 421 sq ft

This floorplan is only for illustrative purposes and is not to scale. Measurements of rooms, doors, windows, and any items are approximate and no responsibility is taken for any error, omission or mis-statement. Icons of items such as bathroom suites are representations only and may not look like the real items. Made with Made Snappy 360.