



HARRISON
Sales &
Lettings
HARDENSON

Wolford Road, Todenham

Guide Price £575,000



This impressive five-bedroom mid-terraced house is offered to the market with no onward chain. Located in a highly desirable village setting, close to Moreton-in-Marsh which has convenient train links to London and Oxford.

Starting downstairs, the open plan kitchen and dining area is perfect for entertaining and is complemented by a beautifully bright garden room and useful utility room for added convenience. The living room features a charming fireplace with a dual aspect log-burner, which also benefits the dining area creating a cosy atmosphere in the colder months. The property has an abundance of natural light, making this home feel light and airy. Ample storage solutions are throughout the property, making it both practical and stylish. Beautiful countryside views can be enjoyed from various rooms, enhancing the sense of tranquillity. The property provides five double bedrooms, ideal for family living or those needing additional space for guests or additional space for a home office. The exterior of the property offers driveway parking for two cars, a valuable asset in this sought-after location. The private rear garden provides a delightful outdoor retreat, ideal for al fresco dining or relaxing with family and friends. The surrounding village offers a welcoming community atmosphere and picturesque rural walks, making this an ideal setting for both families and professionals. EPC: D



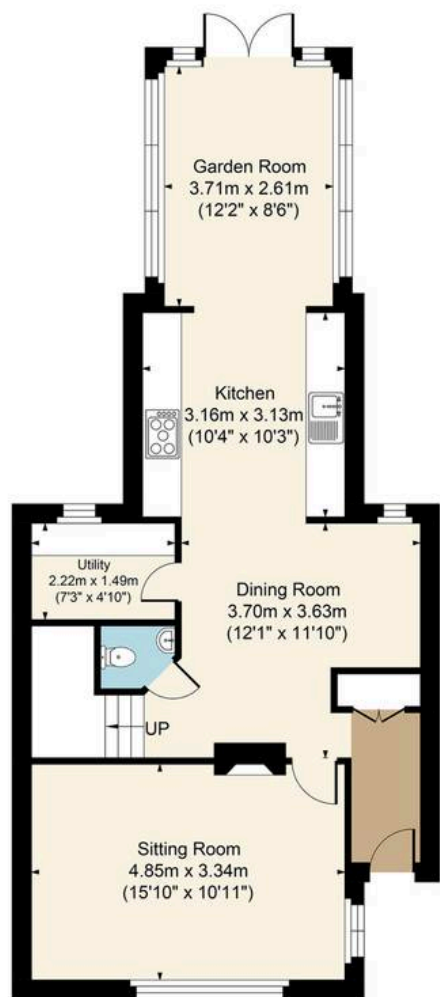
Council Tax Band: C

Tenure: Freehold

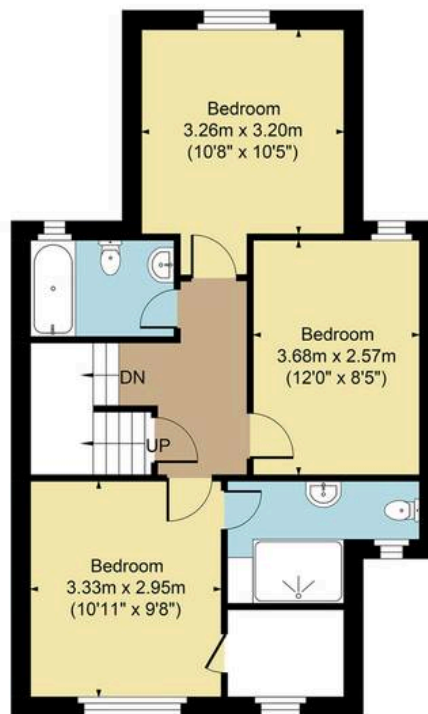
Todenham is a pretty village located three miles away from Moreton-in-Marsh and Shipston-on-Stour. The village offers many scenic walks across open countryside and access to Todenham Manor Farmshop is a pleasant addition to the village's amenities which provides locally sourced fruit and vegetables, a cafe, a butcher and much more!



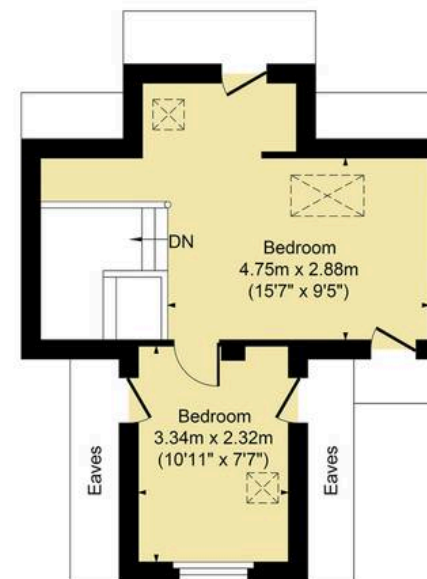
Main House Approx. Gross Internal Area:- 138.16 sq.m. 1487 sq.ft.



Ground Floor



First Floor



Second Floor

FOR ILLUSTRATIVE PURPOSES ONLY-NOT TO SCALE
The position & size of doors, windows, appliances and other features are approximate only.
□□ Denotes restricted head height
www.dmlphotography.co.uk