



20 Courteenhall Drive  
Corby, NN17 5FE



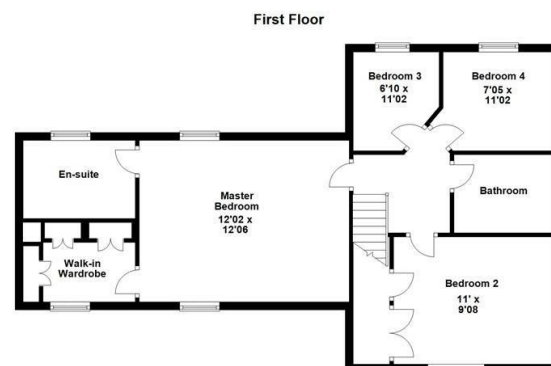
**Simpson West**

Located within the highly prestigious Priors Hall Park is this rarely available FOUR bedroom family home that is being offered to the market for sale with no onward chain. This home occupies a pleasant position within a quiet cul-de-sac and is within walking distance to the local schools, shops and other amenities. Features include an entrance hall, cloakroom w/c, modern fitted kitchen dining room and the living room with doors leading to the rear garden. To the first floor there are two generous single bedrooms, a good double bedroom with fitted storage, the family bathroom and the master bedroom with walk in wardrobe and en-suite shower room. Outside there is a fully enclosed garden that is mainly laid to lawn. Additionally there is a single garage, allocated parking and a large brick store/utility area. Early viewings are a must. Energy rating C. Council Tax Band C.

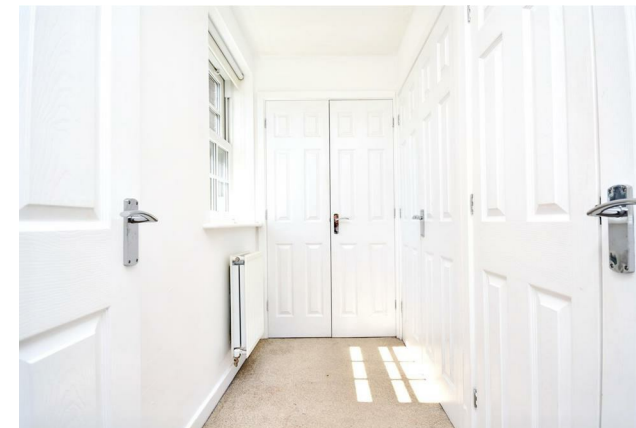
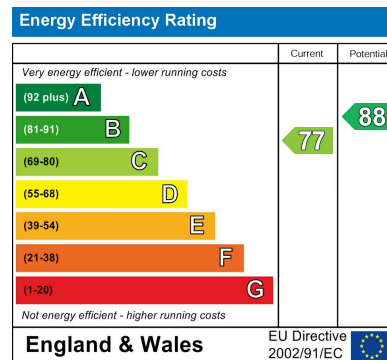


£239,950





Floor plan not to scale - for guidance purposes only.  
 Floor plan created by Simpson West for their use.  
 Plan produced using PlanUp.



When you buy with Simpson West, you know **you'll be in safe hands**. From the moment you walk through our doors, we'll make you **feel truly welcome**. Our sales consultants and financial advisors will take you through **every step of the process**, offering **free expert advice** along the way, from help choosing the right mortgage and insurance through to finding your conveyancer. And if you need help selling your home too, **with over 20 years of local experience, you can trust us to get you moving**.



**Simpson  
West**

Making Every  
Journey Personal



01536 202007

[info@simpsonwest.co.uk](mailto:info@simpsonwest.co.uk)

<https://www.simpsonwest.co.uk/>

64 Corporation Street, Corby, Northants, NN17 1NH