



HILL STREET W1J

£756 PER WEEK

One bedroom apartment (434sq ft) comprising of a large double bedroom, bathroom, spacious reception room with rear facing views over Hay's Mews and a unique kitchenette with access to a private gated communal garden.

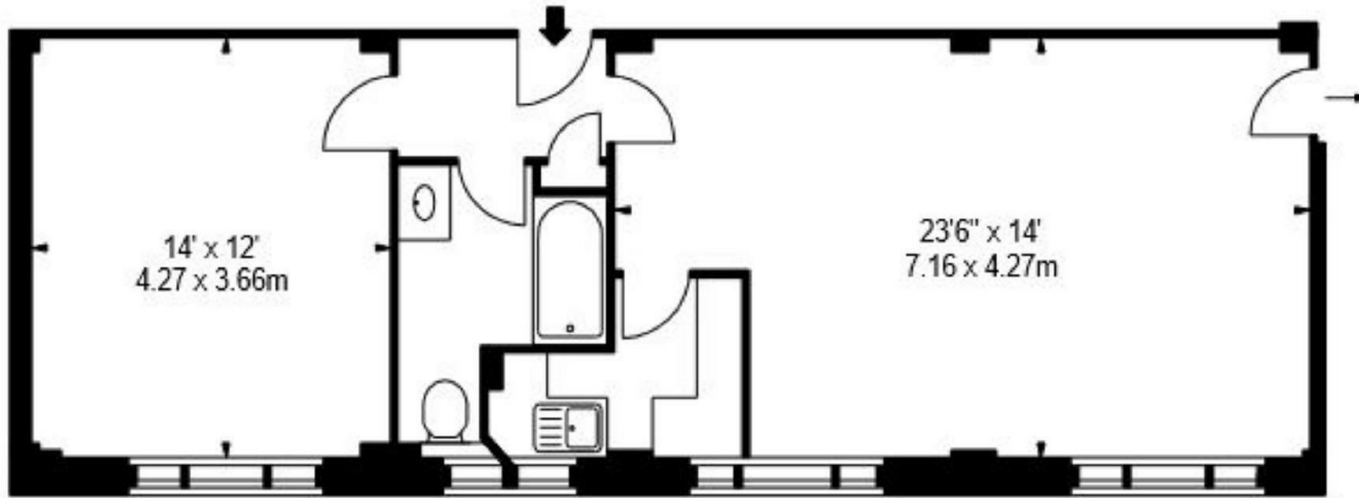
The apartment is in one of London's most prestigious locations, Mayfair, neighbouring the famous Berkeley Square.

This beautiful purpose built building benefits from spacious living accommodation, lift service, on-site building manager, and is nestled conveniently between two of London's parks Hyde Park and Green Park.

PMP | INTERNATIONAL

APPROX. GROSS INTERNAL AREA *
599 Ft² - 55.65 M²

ILLUSTRATION FOR IDENTIFICATION PURPOSES ONLY. NOT TO SCALE
* As Defined by RICS - Code of Measuring Practice



GROUND FLOOR



Energy Efficiency Rating		
	Current	Potential
Very energy efficient - lower running costs		
(92 plus) A		
(81-91) B		
(69-80) C	71	73
(55-68) D		
(39-54) E		
(21-38) F		
(1-20) G		
Not energy efficient - higher running costs		
England & Wales	EU Directive 2002/91/EC	

Agents Note: Whilst every care has been taken to prepare these particulars, they are for guidance purposes only. All measurements are approximate and are for general guidance purposes only and whilst every care has been taken to ensure their accuracy, they should not be relied upon and potential buyers/tenants are advised to recheck the measurements

London
PMP International
94 Belsize Lane
Belsize Park
London
NW3 5BE

020 7701 2878
info@pmpi.co.uk
www.pmpi.co.uk

PMP | INTERNATIONAL