



23 Norreys Drive, Maidenhead, SL6 4BJ
£229,950 Leasehold

CHAIN FREE A ground floor one bedroomed maisonette in need of updating. With gas fired central heating and private garden the property is within walking distance of the town centre and Elizabeth Line station giving fast access to central London.

Side Entrance

Entrance Hall

Understairs cupboard

Sitting Room

Fireplace , alcove with shelving

Kitchen

Fitted units incorporating inset stainless steel sink, floor and wall cupboards and drawers, built in oven with four ring gas hob over, space for washing machine and fridge freezer, alcove with meter cupboard, work surface and cupboard above, cupboard housing gas fired boiler, walk in larder cupboard, fitted breakfast table

Bathroom

White suite comprising close coupled WC, pedestal wash basin, panelled bath with mixer hand shower attachment and glazed screen, fully tiled walls

Bedroom

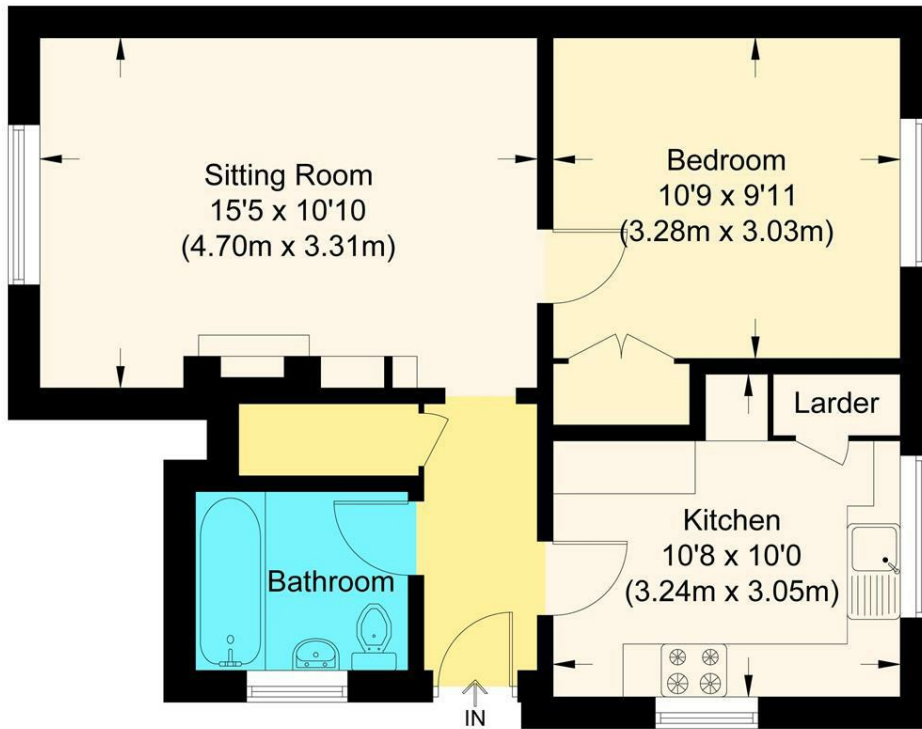
Double built in wardrobe

Outside

Garden to the rear laid to lawn with patio. Brick built storage shed

Floor Plan

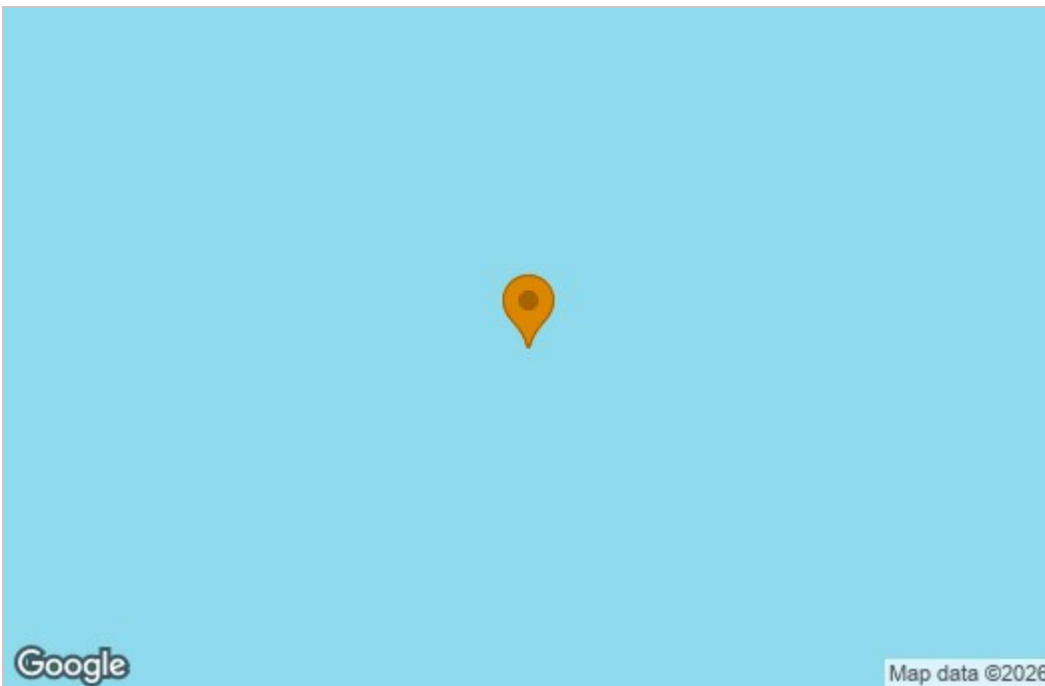
Norries Drive
 Approximate Gross Internal Area 45.11 sq m / 485.56 sq ft



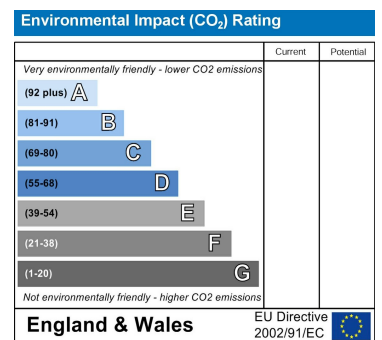
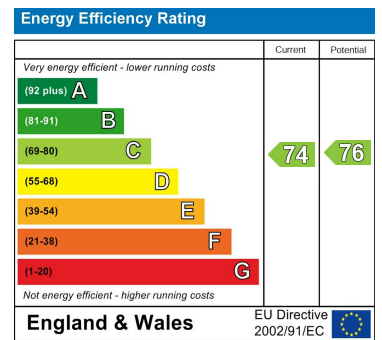
Ground Floor

Illustration for identification purposes only, measurements are approximate, not to scale.

Area Map



Energy Efficiency Graph



These particulars, whilst believed to be accurate are set out as a general outline only for guidance and do not constitute any part of an offer or contract. Intending purchasers should not rely on them as statements of representation of fact, but must satisfy themselves by inspection or otherwise as to their accuracy. No person in this firm's employment has the authority to make or give any representation or warranty in respect of the property.