



Onslow Road
Richmond, TW10

CHESTERTONS





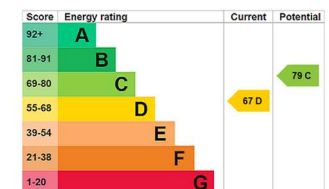
An exquisitely presented one-bedroom conversion apartment occupying the first floor of an attractive period residence on the highly sought-after Richmond Hill.

Combining timeless character with contemporary style, the property offers a bright and spacious reception room, a thoughtfully designed kitchen, a generous double bedroom, and a sleek modern bathroom. Additional benefits include a share of freehold.

Excellent transport links are within easy reach, providing swift access into Central London and beyond, making this an exceptional first-time purchase, elegant pied-à-terre, or superb investment opportunity.

- Share of Freehold
- Prime Location
- Excellent Transport Links
- Richmond Hill Village

Asking Price £500,000



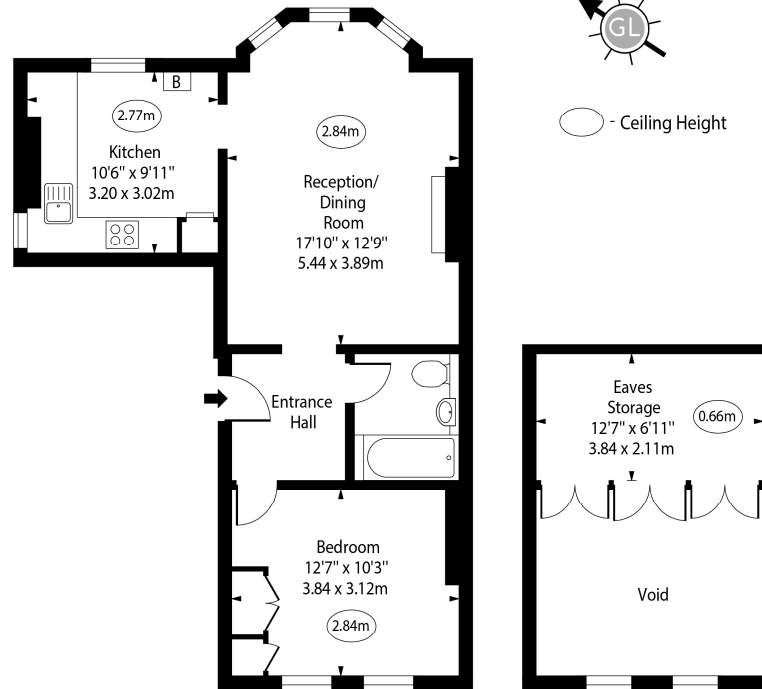
Tenure: Share of Freehold 987 years
Service Charge: £1238 Sinking fund
Ground Rent: £0
Local Authority: London Borough of Richmond upon Thames
Council Tax Band: D

Chestertons Richmond Sales

23a Friars Stile Road
 Richmond
 Surrey
 TW10 6NH

richmond@chestertons.co.uk
 020 3758 3222

Onslow Road,
Richmond,
Surrey, TW10



First Floor

Approx Gross Internal Area 550 Sq Ft - 51.10 Sq M
(Excluding Eaves Storage)

Approx Gross Internal Area 638 Sq Ft - 59.27 Sq M
(Including Eaves Storage)

Eaves Storage Area 88 Sq Ft - 8.17 Sq M

Every attempt has been made to ensure the accuracy of the floor plan shown. However, all measurements, fixtures, fittings, and data shown are approximate interpretations and for illustrative purposes only. Measured according to the RICS. Not To Scale.

www.goldlens.co.uk
Ref. No. 031647M

