



13 Whitby Grove
Swindon

£252,500



13 Whitby Grove

Swindon

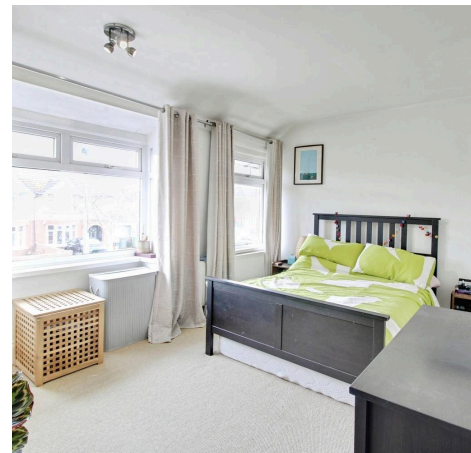
Council Tax band: C

Tenure: Freehold

EPC rating- D

Situated in a popular residential area of Swindon, this well-presented two-bedroom end-of-terrace home offers comfortable and versatile living. The ground floor features an entrance hallway, a front dining room, a bright rear living room with feature fireplace, and a modern fitted kitchen with direct access to the garden. Upstairs are two generous bedrooms and a family bathroom. Outside, there is a private rear garden with seating areas and storage, driveway parking to the front, and the added benefit of side access. Ideally located close to local amenities, schools, and transport links, this property is an excellent choice for first-time buyers.

- Two-bedroom end-of-terrace home
- Separate living room and dining room
- Modern fitted kitchen with garden access
- Private rear garden with shed
- Driveway parking



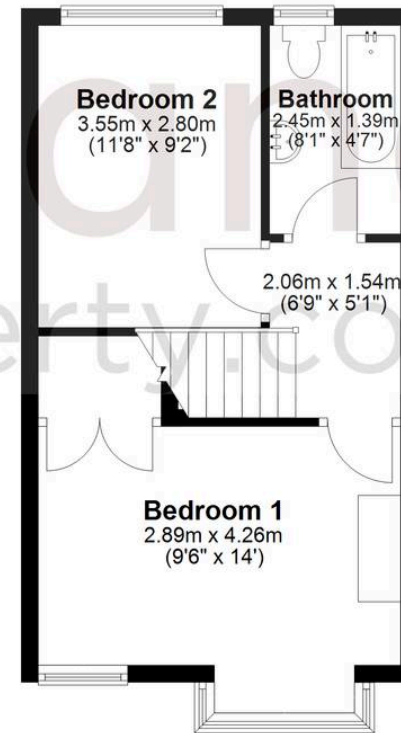
Ground Floor

Approx. 39.8 sq. metres (428.9 sq. feet)



First Floor

Approx. 31.8 sq. metres (342.6 sq. feet)



Total area: approx. 71.7 sq. metres (771.5 sq. feet)

McFarlane Sales & Lettings

North Swindon, Redhouse Village Centre, Swindon - SN25 2FW

01793 296600 • swindon@mcfarlaneproperty.com • www.mcfarlaneproperty.com/