

Sinclair Road, W14

£415 Per week

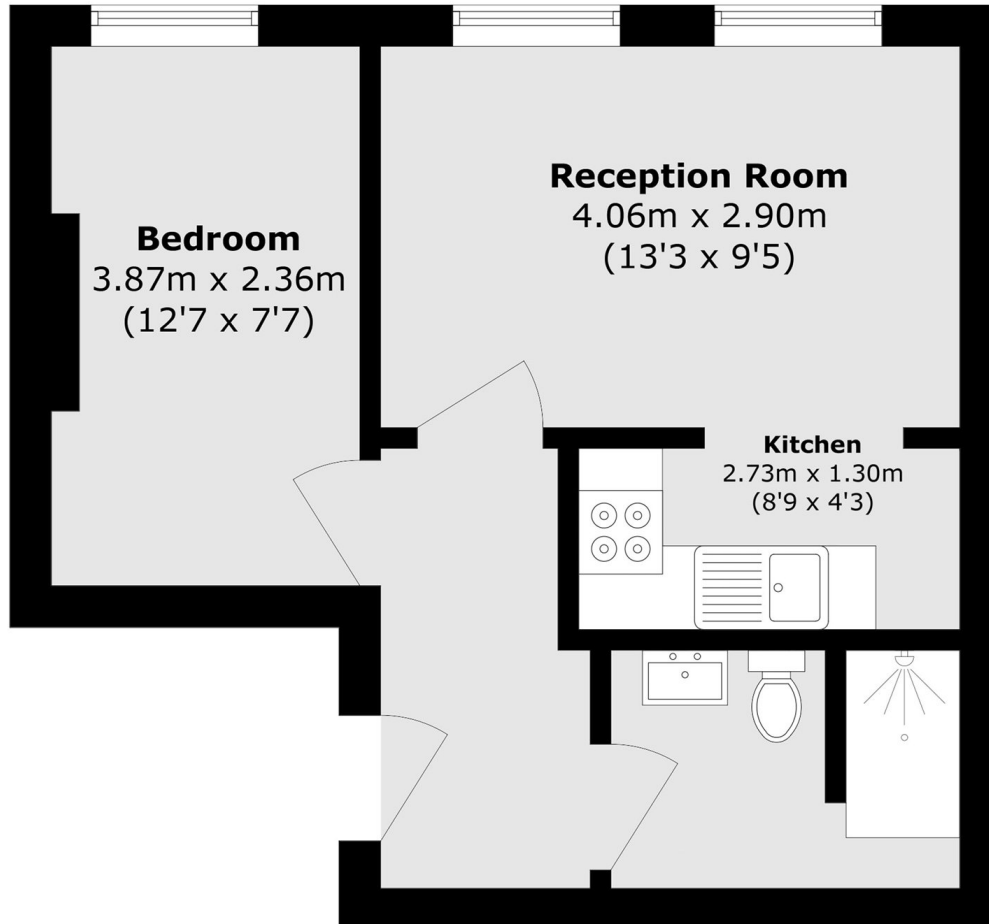
This one bedroom apartment based in a well maintained period building has a great size double bedroom, tiled bathroom and a spacious open plan kitchen reception ideal for entertaining.

Sinclair Road has access to all major amenities including the transport links of Shepherds Bush, Hammersmith and Kensington Olympia Station.

Features

- Top Floor
- Neutral Decor
- Wooden Floors
- Open Plan
- Furnished
- Excellent Location

Sinclair Road,
London, W14



Total area (approx.): 34.2 sq. m (368.1 sq. ft)