



Orchard Road
Kirkby-in-Ashfield NOTTINGHAM

burchell
edwards

Orchard Road Kirkby-in-Ashfield NOTTINGHAM NG17 8JX

for sale guide price
£225,000



Property Description

Situated on Orchard Road in Kirkby-in-Ashfield, this recently renovated three-bedroom home is beautifully presented throughout and finished to a high specification.

An inviting entrance hall with engineered oak flooring and handy downstairs storage leads through to a spacious open plan lounge and dining area, featuring two bay windows to the front, contemporary spotlights and twin radiators, creating a bright and welcoming living space. To the rear, the modern kitchen provides tiled flooring, spotlighting and a range of matching wall and base units with an inset composite sink. Integrated appliances include a dishwasher, electric oven, hob, cooker hood and fridge freezer, with the boiler neatly positioned. A separate utility room adds further practicality with additional units, plumbing/electrics and a door out to the garden, while the ground floor is completed by a cloakroom/WC.

Upstairs, the landing enjoys natural light from a rear window and leads to three well-proportioned bedrooms, including a front facing main bedroom with TV point and a second bedroom with fitted wardrobes and loft access. The bathroom is fitted with a bath and shower over, vanity wash basin, towel radiator, and finished with spotlights.

Outside, the front offers off road parking for up to three vehicles, garage, with lawn and stone sections, while the rear garden is mainly laid to lawn with decking and secure fencing, providing a well presented, low-maintenance outdoor space.

Auctioneer's Comments

This property is offered through Modern Method of Auction. Should you view, offer or bid your data will be shared with the Auctioneer, iamsold Limited. This method requires both parties to complete the transaction within 56 days, allowing buyers to proceed with mortgage finance (subject to lending criteria, affordability and survey).

The buyer is required to sign a reservation agreement and make payment of a non-refundable Reservation Fee of 4.5% of the purchase price including VAT, subject to a minimum of £6600.00 including VAT. This fee is paid in addition to purchase price and will be considered as part of the chargeable consideration for the property in the calculation for stamp duty liability. Buyers will be required to complete an identification process with iamsold and provide proof of how the purchase would be funded.

The property has a Buyer Information Pack containing documents about the property. The documents may not tell you everything you need to know, so you must complete your own due diligence before bidding. A sample of the Reservation Agreement and terms and conditions are contained within this pack. The buyer will also make payment of no more than £349 inc. VAT towards the preparation cost of the pack. Please confirm exact costs with the auctioneer.

The estate agent and auctioneer may recommend the services of other providers to you, in which they will be paid for the referral. These services are optional, and you will be advised of any payment, in writing before any services are accepted. Listing is subject to a start price and undisclosed reserve price that can change.

Entrance Hall

Accessed via a UPVC side entrance door, the welcoming hall features an engineered oak floor, a wall-mounted radiator and useful understairs storage.

Cloakroom / Wc

Fitted with a ceramic WC and finished with a tiled floor, with a double glazed opaque side window providing natural light and privacy.

Lounge/Dining Room

A bright, well-proportioned open-plan reception room with carpeted flooring, two wall-mounted radiators and two attractive double glazed bay windows to the front, complemented by modern spotlights.

Kitchen

A stylish space with tiled flooring, spotlights and a rear-facing double glazed window. Fitted with matching wall and base units and an inset composite stainless-steel sink with drainer, plus integrated appliances including a dishwasher, electric oven, hob, cooker hood and fridge-freezer. The boiler is also positioned within the room.

Utility Room

Practical additional space with tiled flooring, base units, plumbing and electrics, a wall-mounted radiator and a UPVC rear door. A double glazed opaque rear window adds light while maintaining privacy.

First Floor Landing

Carpeted landing with a double glazed rear window bringing in natural light and providing access to the first-floor rooms.

Bedroom One

A comfortable double room with carpeted flooring, a double glazed front window, wall-mounted radiator and a TV point.

Bedroom Two

Carpeted bedroom with a double glazed front window, fitted wardrobes, wall-mounted radiator and access to the loft.

Bedroom Three

A versatile third bedroom with carpeted flooring, double glazed rear window and wall-mounted radiator—ideal as a nursery, guest room or home office.

Bathroom

Finished with vinyl flooring and spotlights, comprising a bath with shower over, ceramic WC and wash hand basin set in a vanity unit, a wall-mounted towel radiator, tiled splashbacks and a double glazed opaque rear window.

Externals

To the front, the property offers off-road parking for up to two vehicles, with brick wall boundaries, a lawned area and a loose stone section.

The rear garden is mainly laid to lawn with decking and secure fencing, creating a low-maintenance, well-presented outdoor space.

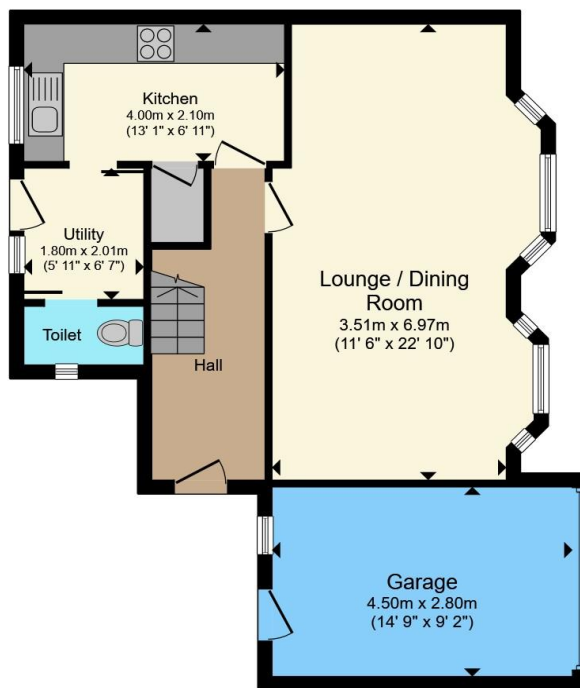
Garage

External single garage with sheet up and over door, power, lighting, internal door to the rear garden and additionally pre-fitted for two electric chargers.

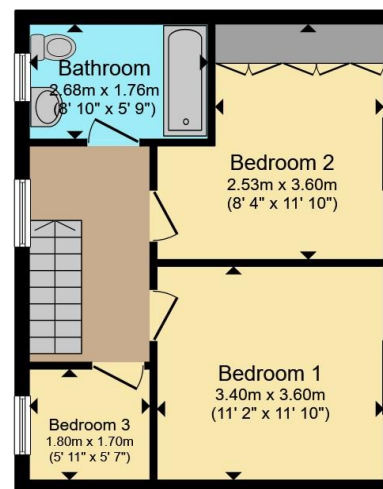








Ground Floor



First Floor

Total floor area 99.2 m² (1,067 sq.ft.) approx

This floor plan is for illustrative purposes only. It is not drawn to scale. Any measurements, floor areas (including any total floor area), openings and orientation are approximate. No details are guaranteed, they cannot be relied upon for any purpose and they do not form part of any agreement. No liability is taken for any error, omission or misstatement. A party must rely upon its own inspection(s). Powered by www.propertybox.io



To view this property please contact Burchell Edwards on

T 01623 627727
E Mansfield@burchelledwards.co.uk

12 Albert Street
 MANSFIELD NG18 1EB

EPC Rating: D Council Tax
 Band: B

Tenure: Freehold

check out more properties at burchelledwards.co.uk



1. MONEY LAUNDERING REGULATIONS Intending purchasers will be asked to produce identification documentation at a later stage and we would ask for your co-operation in order that there will be no delay in agreeing the sale. 2. These particulars do not constitute part or all of an offer or contract. 3. The measurements indicated are supplied for guidance only and as such must be considered incorrect. Potential buyers are advised to recheck measurements before committing to any expense. 4. We have not tested any apparatus, equipment, fixtures, fittings or services and it is in the buyers interest to check the working condition of any appliances.

Burchell Edwards is a trading name of Connells Residential which is registered in England and Wales under company number 1489613, Registered Office is Cumbria House, 16-20 Hockliffe Street, Leighton Buzzard, Bedfordshire, LU7 1GN. VAT Registration Number is 500 2481 05.

See all our properties at www.burchelledwards.co.uk | www.rightmove.co.uk | www.zoopla.co.uk

Property Ref: MFD209876 - 0001