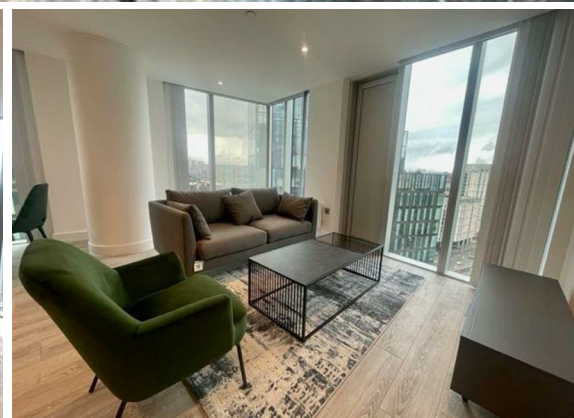
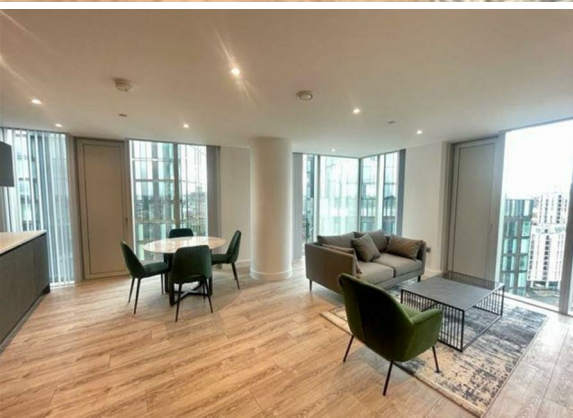




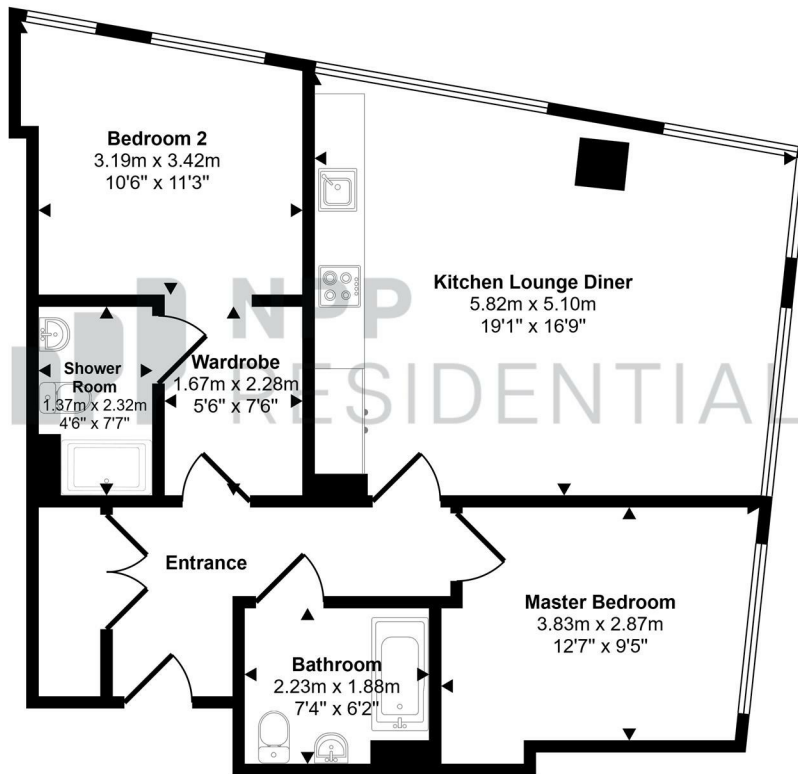
**2 Bed
Flat
located in 15
Silvercroft Street**

Price £360,000



 **NPP
RESIDENTIAL**

Approx Gross Internal Area
70 sq m / 753 sq ft



Floorplan

This floorplan is only for illustrative purposes and is not to scale. Measurements of rooms, doors, windows, and any items are approximate and no responsibility is taken for any error, omission or mis-statement. Icons of items such as bathroom suites are representations only and may not look like the real items. Made with Made Snappy 360.

DIRECTIONS

CONTACT

22 Lloyd Street
Manchester
M2 5WA

E: info@nppresidential.co.uk
T: 0161 639 0059
<https://nppresidential.co.uk/>

EPC Rating: B
Council Tax Band: D

