



## Durnsford Road, SW19

£299,950

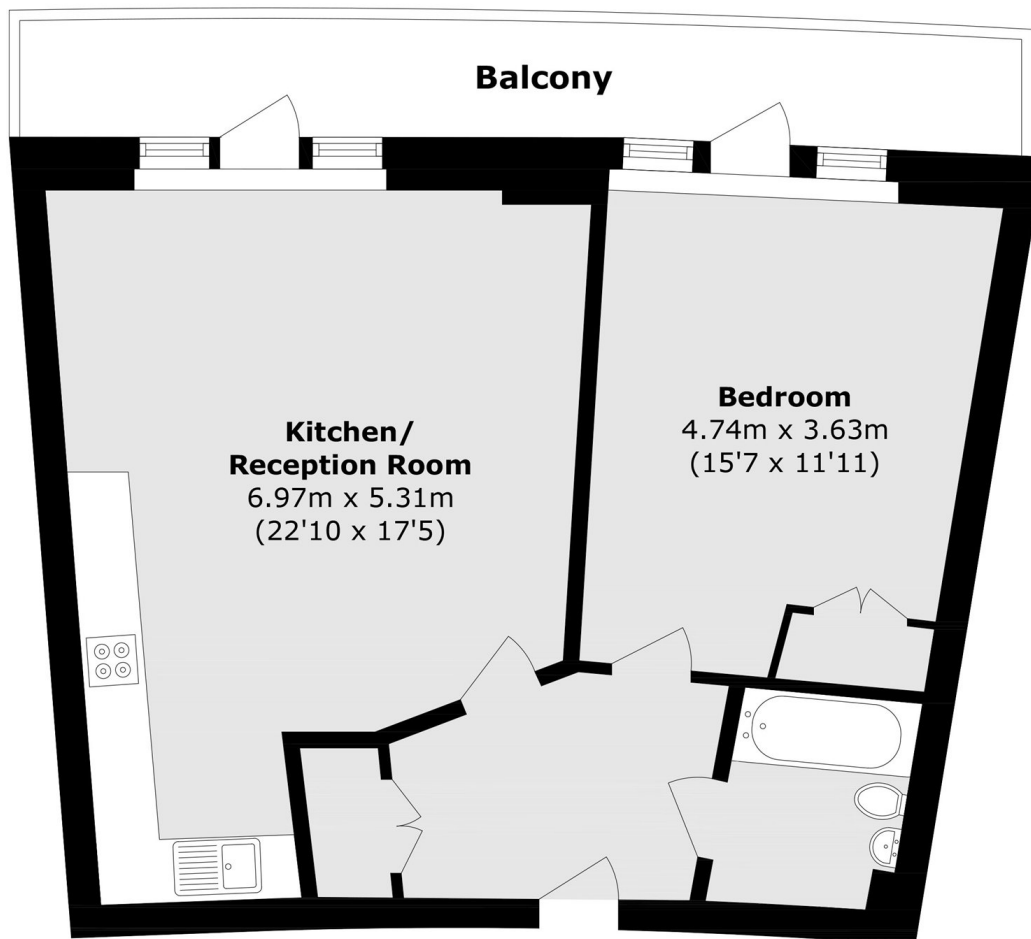
Arguably one of the most impressive one bedroom apartments in the building, with an expansive terrace with 280 degree views, located on the top floor and sold with no onward chain.

Ideally located within close proximity of Wimbledon Park and an outstanding primary school. There's easy access to both Earlsfield and Southfields where there are excellent transport links and a huge variety of shops, bars and restaurants. EPC rating B.

### Features

- Breathtaking Views
- Over 600 Square Feet
- Allocated Parking Space
- Large Curved Terrace
- Top Floor With Lift
- No Onward Chain

# Durnsford Road, London, SW19



Total area (approx.): 56.8 sq. m (611.3 sq. ft)

Balcony Total (approx.): 10.9 sq. m (117.3 sq. ft)