



CLAREVILLE GROVE, SW7

£875,000

Share of freehold
Raised ground floor
Large one bedroom
Quiet address
High ceilings
Energy rating d

@marshandparsons
marshandparsons.co.uk

MARSH &
PARSONS



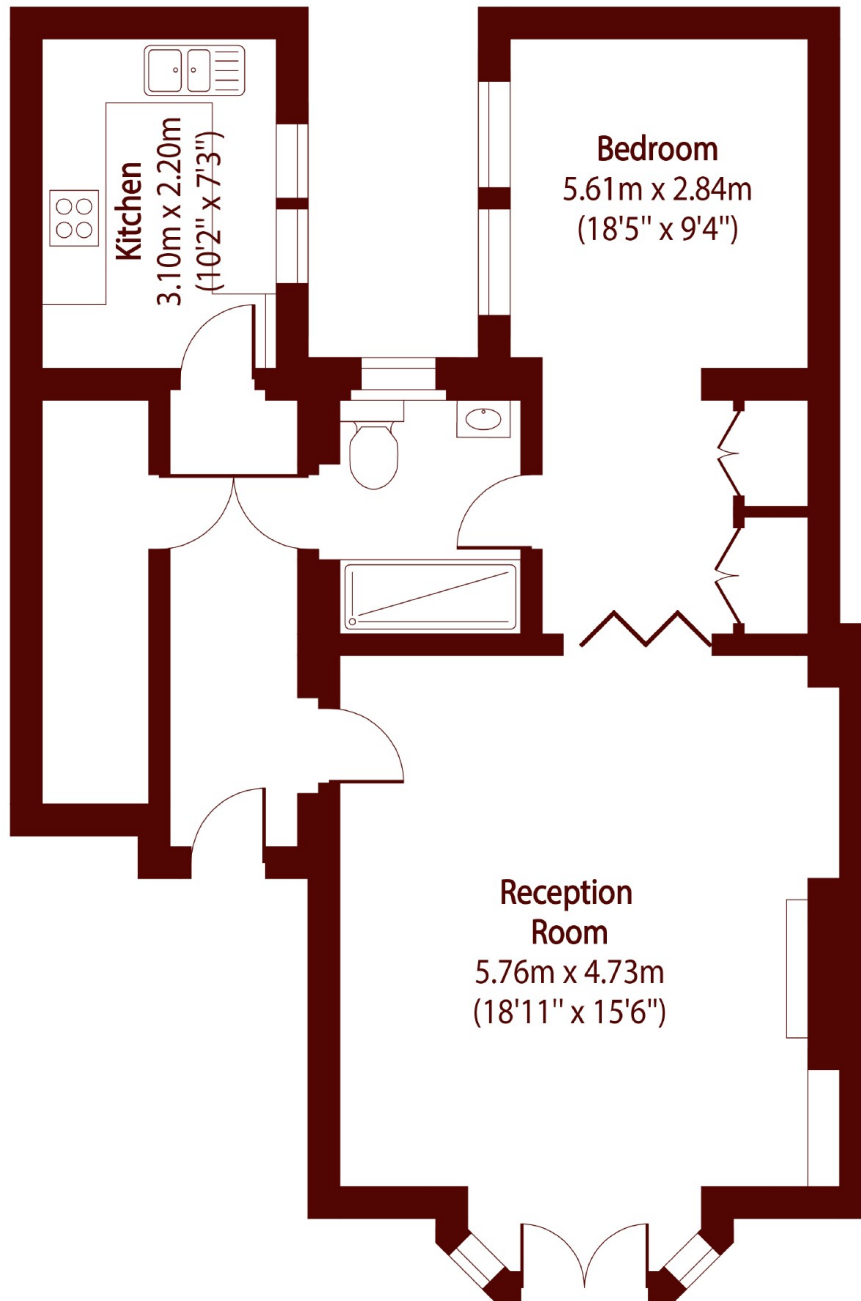
ABOUT THE PROPERTY

Set on the raised ground floor of an attractive period building on the sought-after Clareville Grove, this well-presented one bedroom apartment offers elegant living in the heart of South Kensington.

Clareville Grove is a quiet, tree-lined street ideally positioned for the shops, restaurants and cafés of Gloucester Road and South Kensington. The open spaces of Hyde Park and Kensington Gardens are also close by, as are excellent transport links via Gloucester Road Underground Station.



STEP INSIDE CLAREVILLE GROVE



Total area (approx): 63.85 sq m (687 sq. ft)

South Kensington
020 7590 0800

Energy Rating: D We aim to make our particulars both accurate and reliable. However, they are not guaranteed; nor do they form part of an offer or contract. If you require clarification on any points then please contact us, especially if you're traveling some distance to view. Please note that appliances and heating systems have not been tested and therefore no warranties can be given as to their good working order

MARSH &
PARSONS