

154 Middletons
Lane
Hellesdon
Norwich



154 Middletons Lane

Guide Price £230,000

The Characterful Terrace With Rare Parking...

Situated on the ever-popular Middletons Lane in Hellesdon, this attractive early 20th century three-bedroom terraced home offers generous living accommodation, a wealth of character features and the rare advantage of private parking for four vehicles when parked in tandem to the rear. Ideally positioned within easy reach of local schools, shops, dentists and regular bus routes, the property also enjoys excellent access into Norwich city centre, Norwich Train Station and Norwich International Airport, making it perfectly suited to both families and commuters alike.

The property is set back behind a shingled front garden with an enclosed porch entrance, creating a practical space for coats and shoes before stepping into the welcoming interior. The sitting room is beautifully light thanks to a large front-facing window and features laminate flooring alongside an original fireplace, adding warmth and personality to the space. An open archway leads seamlessly through to a particularly spacious dining room, complete with a further feature fireplace and staircase rising to the first floor.

To the rear, the kitchen offers excellent proportions with ample storage and a skylight flooding the room with natural light. The current cooker, fridge freezer and washing machine are all included within the sale. Beyond the kitchen is a stylish family bathroom, created as part of a later extension, featuring a heated towel rail, radiator and additional storage space.

Upstairs, the property follows the classic terrace layout with two generous double bedrooms and a useful box room off the principal bedroom. This versatile additional space could serve as a dressing room, nursery, home office or potentially be converted into an en suite, subject to any necessary permissions. Both bedrooms retain attractive original fireplaces, enhancing the home's period appeal.

Outside, the rear garden enjoys a peaceful setting with a patio seating area, lawn, shed and former coal store, while side access leads directly through to the front of the property. Beyond the garden are four private parking spaces (when parked in tandem) — an exceptionally rare feature for a home of this style and location.

Middletons Lane itself is a highly regarded residential setting within Hellesdon, known for its strong sense of community and convenient access to both countryside walks and Norwich's vibrant city amenities. The property is offered chain free and is ready for immediate occupation.

Agents notes...

A pre-recorded walkaround tour is available for this property

EPC to follow

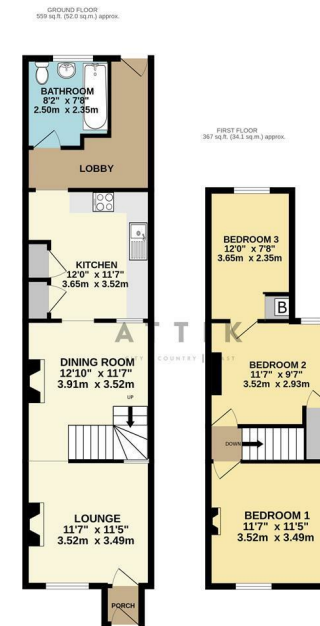
Local Authority
Broadland

Council Tax Band B

EPC Rating



Contact
01603 964777
enquiries@attikccc.co.uk
www.attikccc.co.uk



Whilst every attempt has been made to ensure the accuracy of the figures contained here, measurements of doors, windows, rooms and any other items are approximate and no responsibility is taken for any error, omission or mis-statement. This plan is for illustrative purposes only and should be used as such for prospective purchase. The services, systems and specifications shown have not been tested and no guarantee as to their operability or efficiency can be given. Make with Metreps (2024)