

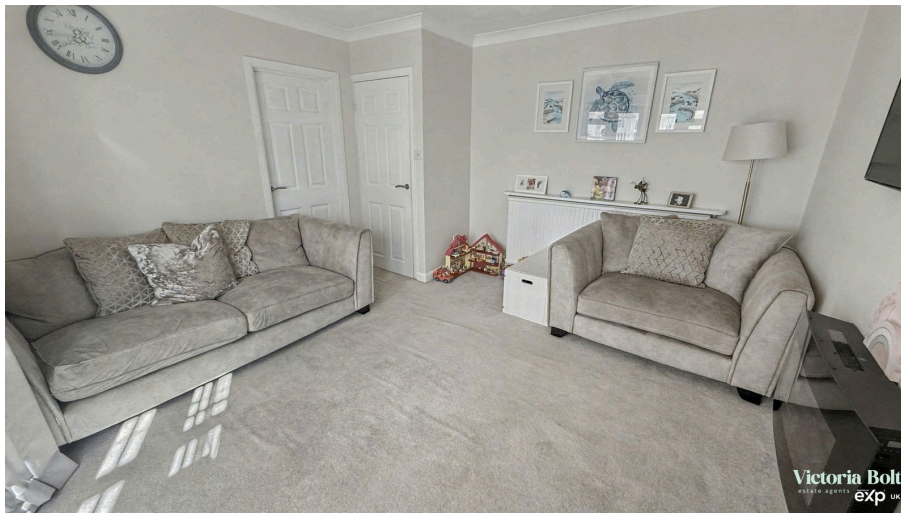


Victoria Bolt
estate agents POWERED BY **exp** UK

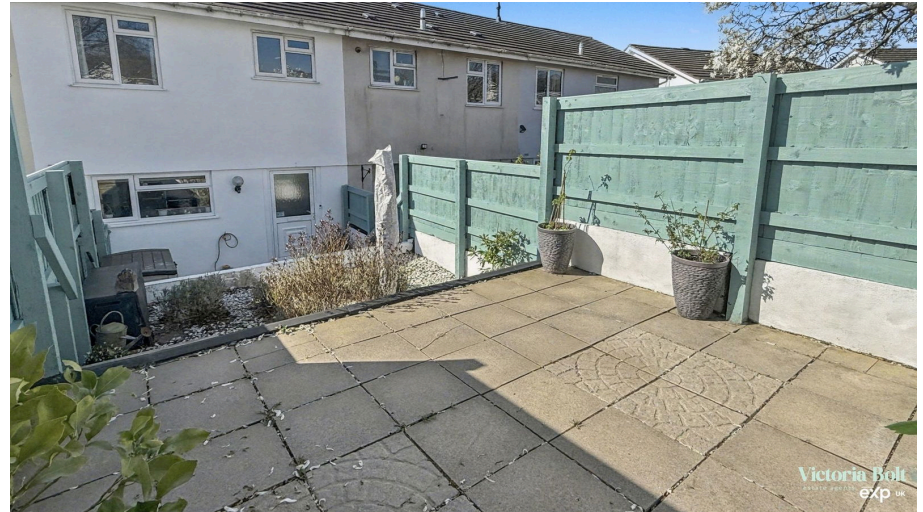
Butterdon Walk, Ivybridge

Guide Price £220,000

🛏️ 2 🚿 1 🚗 1



- Well-presented two-bedroom terraced home
- Bright and spacious lounge
- Two double bedrooms
- Private rear garden
- Convenient access to local amenities, schools, and transport links
- Recently fitted modern kitchen with integral appliances
- Versatile conservatory/dining room
- Main bedroom with fitted wardrobes and countryside views
- On-street parking available
- Popular location in Ivybridge, just off Cole Lane



A well-presented two-bedroom terraced home located in the popular Butterdon Walk area of Ivybridge, just off Cole Lane. This property offers bright and practical living, ideal for first-time buyers, small families, or those seeking a convenient location. The ground floor features a modern, recently fitted kitchen with integral appliances, a spacious lounge, and a versatile conservatory used as a dining and play area. Upstairs are two double bedrooms, including a main bedroom with fitted wardrobes and far-reaching countryside views, along with a family bathroom. Outside, the home benefits from a private garden and on-street parking, with easy access to local amenities, schools, and transport links.



This floorplan is only for illustrative purposes and is not to scale. Measurements of rooms, doors, windows, and any items are approximate and no responsibility is taken for any error, omission or mis-statement. Icons of items such as bathroom suites are representations only and may not look like the real items. Made with Made Snappy 360.

