



Chester Row

Belgravia, SW1W

£8,016.67 per month
(£1,850 per week)

Newly redecorated throughout, this stunning townhouse of circa 1,825 square feet is situated in popular Belgravia location, close to the amenities and public transport facilities of Sloane Square.

The property benefits from neutral modern decor, wood flooring in the principal rooms and a large private south-facing garden. The accommodation comprises of a spacious reception, dining room, conservatory, separate fully fitted kitchen, two double bedrooms, two en suite bathrooms and a guest WC. Unfurnished.



Chester Row

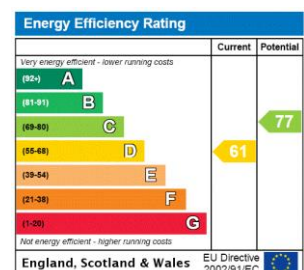
Belgravia, SW1W

- Large private garden
- Two receptions
- Conservatory
- Wood flooring
- Two double bedrooms
- Chester Row address



Chester Row is a much admired terrace, situated south of Eaton Square and within easy access of the many local shops and boutiques of Orange Square and Elizabeth Street as well as the excellent amenities provided by Sloane Square.

Minimum Term: 12 months
Deposit Required: £11,100.00
Local Authority: City Of Westminster
Council Tax Band: H
EPC Rating: D
Unfurnished



Chestertons Knightsbridge & Belgravia Lettings

31 Lowndes Street
London
SW1X 9HX
lettings.knightsbridge@chestertons.com
02072353530
chestertons.com

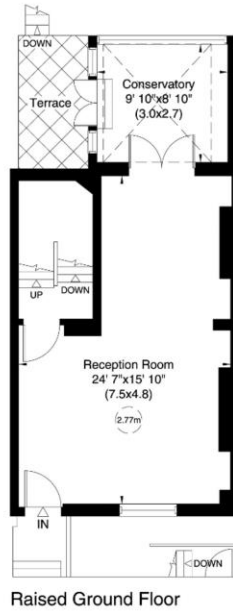
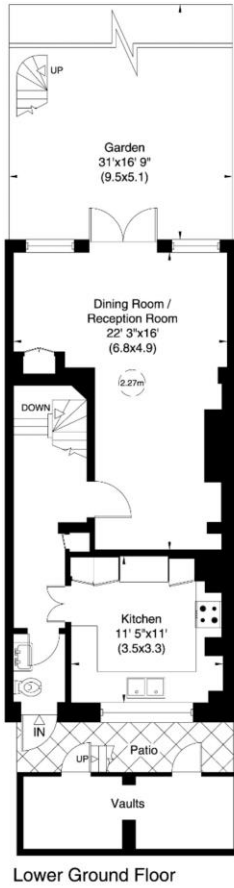
Additional tenant charges apply (fees apply to non-AST tenancies only)
Tenancy Agreement Fee: £300
References per Tenant/Guarantor: £60
Inventory check (approx. £100 – £250 inc. VAT)
chestertons.com/property-to-rent/applicable-fees

67 Chester Row, SW1

Gross internal area (approx.)
 170 Sq m (1825 Sq ft) Including Under 1.5m and Vault
 158 Sq m (1704 Sq ft) Excluding Under 1.5m and Vault

For identification only, Not to Scale

Floor Plan by **capital group** 020 8671 7722



Not to scale, for guidance only and must not be relied upon as a statement of fact. All measurements and areas are approximate only (and have been prepared in accordance with the current edition of the RICS Code of Measuring Practice).

