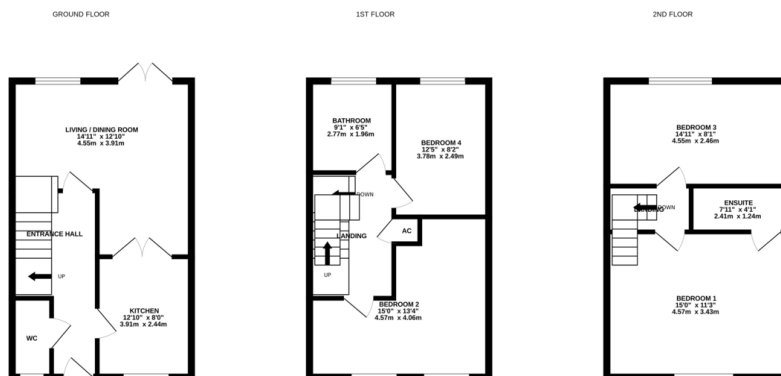




FOR SALE

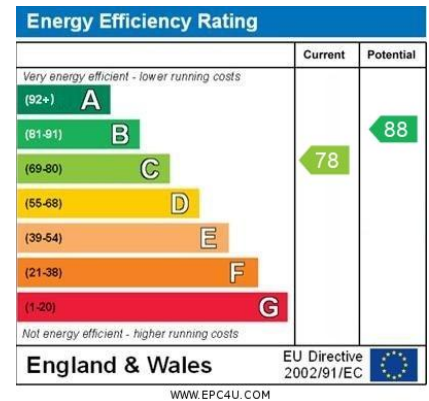
4 Bed Semi-Detached House in Yaffle Crescent, Desborough, NN14 2GB
£290,000

*** No Chain *** Three storey semi detached house for sale close to the town centre in Desborough. This great home offers flexible accommodation over the three floors providing either one/two reception rooms or three/four bedrooms catering for any individual needs. The accommodation comprises entrance hall, kitchen, lounge, downstairs w.c., four bedrooms, family bathroom, en-suite to master, rear garden and tandem driveway to the side of the property.



Whilst every attempt has been made to ensure the accuracy of the floorplans contained herein, measurements of doors, windows, rooms and any other items are approximate and no responsibility is taken for any error, omission or misstatement. This plan is for illustrative purposes only and should be used as such by any prospective purchaser. The services, systems and appliances shown have not been tested and no guarantee as to their operability or efficiency can be given.

Made with Metreplan C2025



- No Chain
- Three Storey
- Semi Detached
- Four Bedrooms
- En-Suite To Master
- Tandem Driveway
- Close To Town Centre
- Small Development

Agents Note: Whilst every care has been taken to prepare these sales particulars, they are for guidance purposes only. All measurements are approximate are for general guidance purposes only and whilst every care has been taken to ensure their accuracy, they should not be relied upon and potential buyers are advised to recheck the measurements.

