



**Euston Road, NW1**

**£860,000**

**Dexters**



## Euston Road, NW1

A spacious and modern refurbished two bedroom, two bathroom apartment in the heart of Fitzrovia, offered with no onward chain. The property features a bright reception room, a contemporary kitchen, and two well proportioned bedrooms. Further benefits include a low service charge and high ceilings.

Euston Road is ideally located on the border of Fitzrovia and Marylebone, offering a vibrant mix of cafés, restaurants, and boutique shops, along with easy access to the open green spaces of Regent's Park. The area benefits from excellent transport connections, with Great Portland Street, Regent's Park, and Warren Street stations all within easy reach, as well as Euston Station nearby for national rail services.

### Features

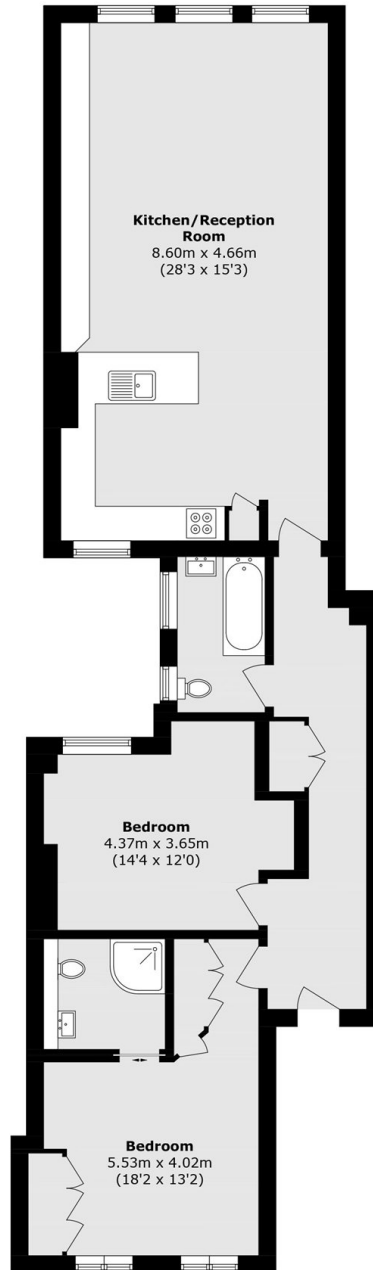
- Two Large Double Bedrooms
- Modern Interior
- High Ceilings
- Two Bathrooms
- No Onward Chain
- Close To Transport







# Euston Road, LONDON, NW1



## Second Floor

Total area (approx.): 95.3 sq. m (1025.8 sq. ft)