



# Ontario Tower

4 Fairmont Avenue, E14

Asking Price £215,000

Comprising separate sleeping area, excellent storage and open plan kitchen and reception. The development benefits from a gym, swimming pool, sauna and 24 hr concierge.

**CHESTERTONS**





# Ontario Tower

4 Fairmont Avenue, E14

- • Studio Apartment
- • Swimming pool
- • 24 Hour Concierge
- • 14th Floor
- • Chain Free





Immaculate studio apartment located on the 14th floor of Ontario Tower. Comprising separate sleeping area, excellent storage and open plan kitchen and reception. The development benefits from a gym, swimming pool, sauna and 24 hr concierge.

Canary Wharf and Docklands are charming areas situated in the east of London, north of the river Thames. The area is well connected via Greenwich, Tower Bridge, City Airport and DLR stations as well as the river taxi making The City easily accessible. Residents can enjoy walks along the banks of the River Thames all the way to the Greenwich foot tunnel which is home to an array of bars and restaurants and large parks. The area also boasts many of its own amenities including Canary Wharf shopping centre and an expansive business district.

**Tenure:** Leasehold 975 years approx. remaining

**Service Charge:** £4,906 pa approx.

**Ground Rent:** £300 Doubles every 25th anniversary of the term for the first 100

**Local Authority:** Tower Hamlets

**Council Tax Band:** D

Energy Efficiency Rating		
	Current	Potential
Very energy efficient - lower running costs		
<b>A</b> (94-100)		
<b>B</b> (81-93)		
<b>C</b> (69-80)	77	78
<b>D</b> (55-68)		
<b>E</b> (39-54)		
<b>F</b> (21-38)		
<b>G</b> (1-20)		
Not energy efficient - higher running costs		
England, Scotland & Wales		EU Directive 2002/91/EC

### *Chestertons Canary Wharf & Greenwich Sales*

Harbour Island

28 Harbour Exchange Square

London

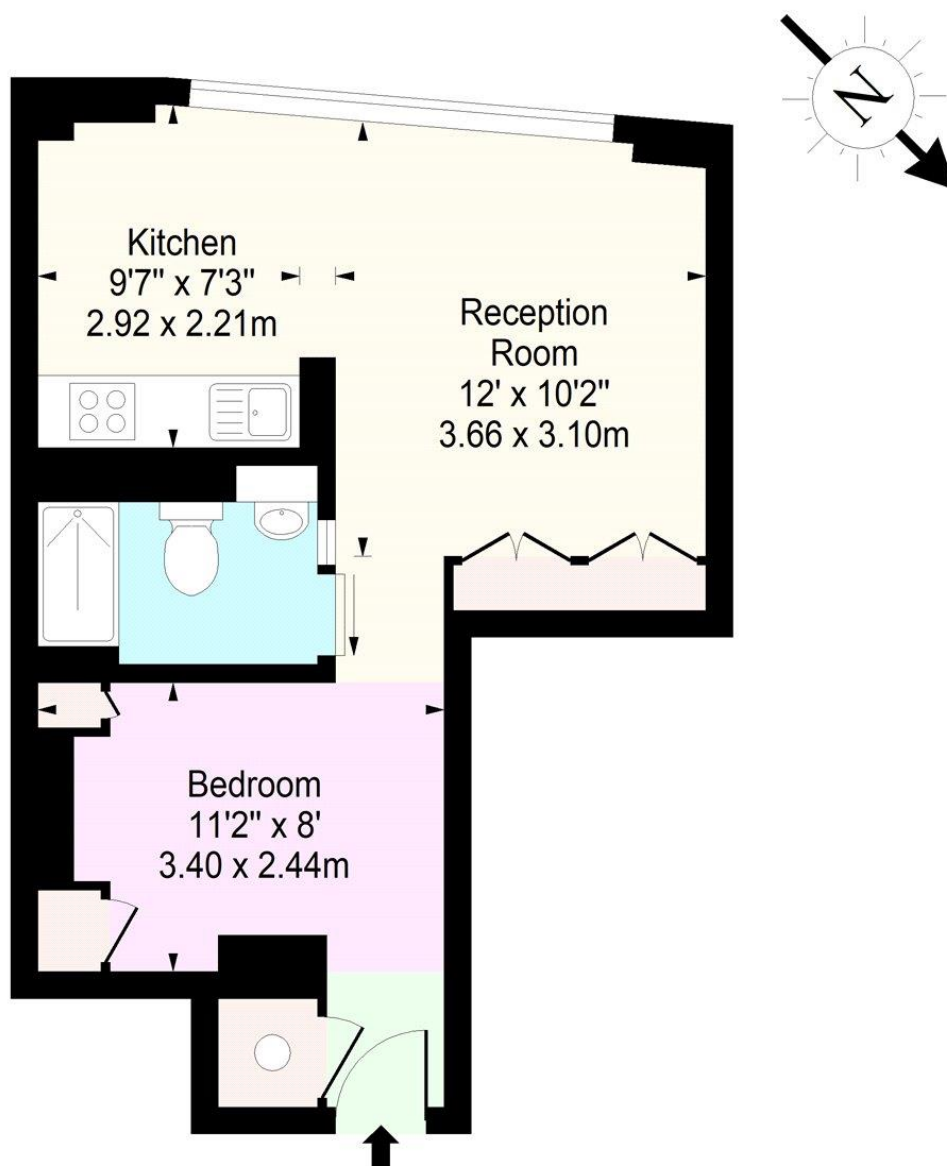
E14 9GE

canarywharf@chestertons.co.uk

020 7510 8300

chestertons.co.uk

# ONTARIO TOWER, E14



## Fourteenth Floor

Approx. Gross Internal Area 386 Sq Ft - 35.86 Sq M

For Illustrative Purposes Only - Not To Scale

[www.lpaplus.com](http://www.lpaplus.com)

