

**Churchills**

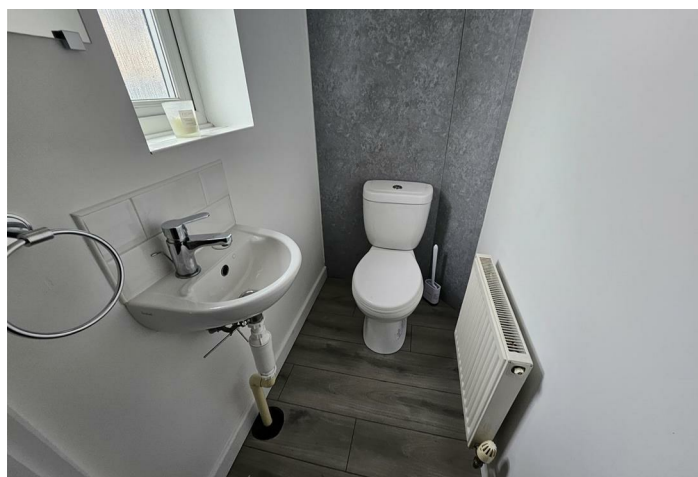
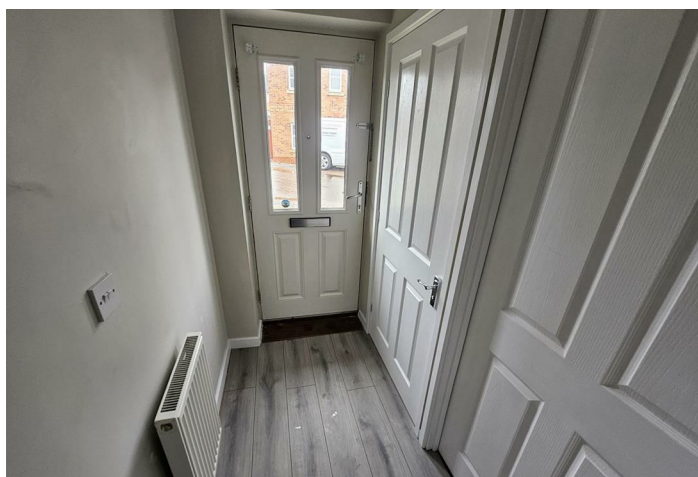


## Stonefont Grove

Grimethorpe, Barnsley S72 7FX

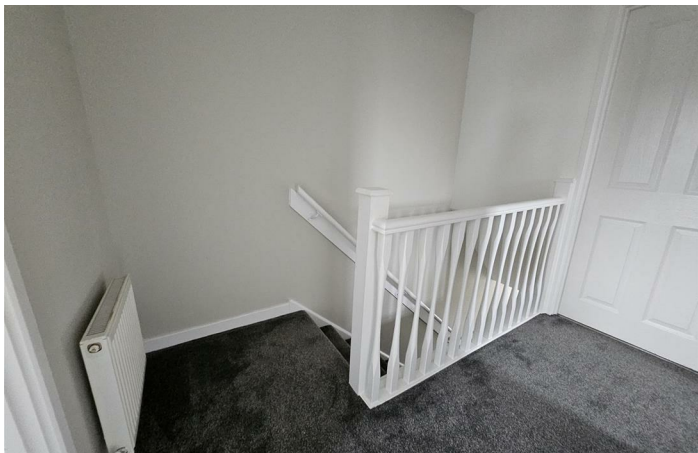
- THREE BEDROOMS
- MODERN THROUGHOUT
- KITCHEN & DINING AREA
- ENCLOSED GARDENS
- SPACIOUS LIVING
- NEWLY DECORATED & FLOORING
- GARAGE & DRIVEWAY
- EPC RATING C

**£925 PCM**





Location





**Local Authority Barnsley**  
**Council Tax Band A**  
**EPC Rating C**



**Churchills Lettings Office**

16 High Street, Mexborough, South  
Yorkshire, S64 9AS

**Contact**

01709 582880  
Info@churchillsestateagents.com  
www.churchillsestateagents.com

Agents Note: Whilst every care has been taken to prepare these particulars, they are for guidance purposes only. All measurements are approximate and for general guidance purposes only and whilst every care has been taken to ensure accuracy, they should not be relied upon and potential buyers/tenants are advised to recheck the measurements.