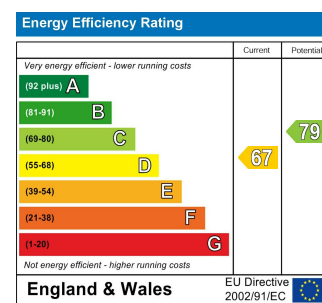
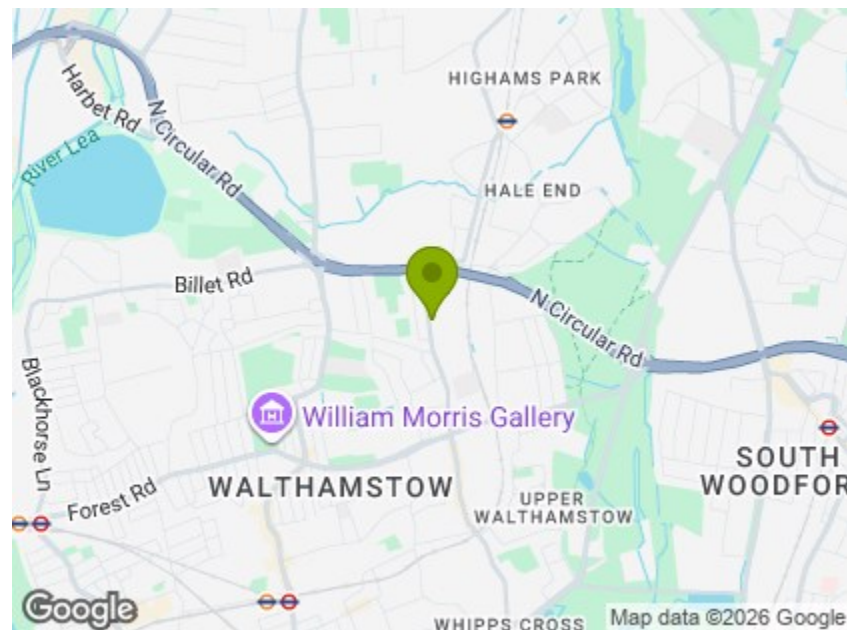




Total Area: 117.4 m² ... 1263 ft² (excluding eaves storage)
 All measurements are approximate and for display purposes only



FULBOURNE ROAD, WALTHAMSTOW

£2,850 Per Calendar Month
 4 Bed House



Features:

- Victorian Terrace House
- Four Bedrooms
- High Spec Finish
- Period Features Throughout
- Two Bathrooms + WC
- Eat in Kitchen/Diner
- Huge Double Sized Garden
- Fantastic Transport Links

This well balanced four-bedroom terraced home sits in a fantastic part of E17, with the buzzing amenities of Walthamstow in one direction, the peaceful greenery of Epping Forest in another, and the convenience of Wood Street station close by.

Inside, you'll find a secluded rear garden, two reception rooms, a generous kitchen/diner, ground floor WC, first floor bathroom and a converted loft with ensuite, all complemented by a charming sprinkling of period features.

REQUEST A VIEWING
 0203 397 9797

E11, E7, E12 & E15
 hello11@stowbrothers.com
 0203 397 2222

E4 & N17
 hello4@stowbrothers.com
 0203 369 6444

E17 & E10
 hello17@stowbrothers.com
 0203 397 9797

E18 & IG8
 hello18@stowbrothers.com
 0203 369 1818

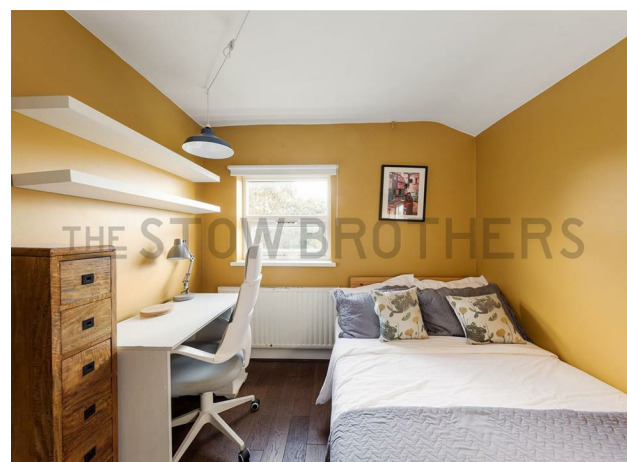
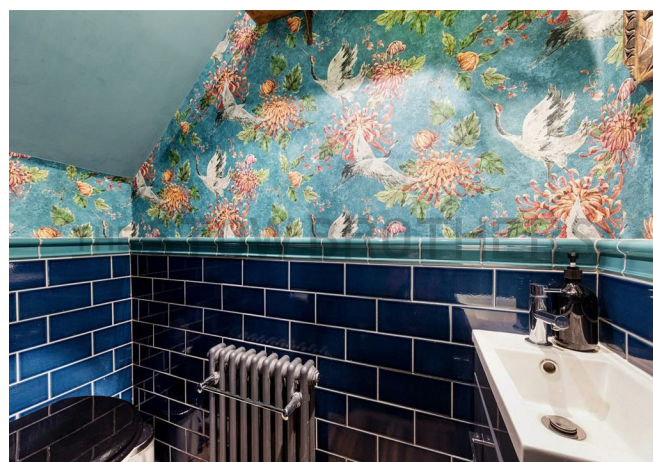
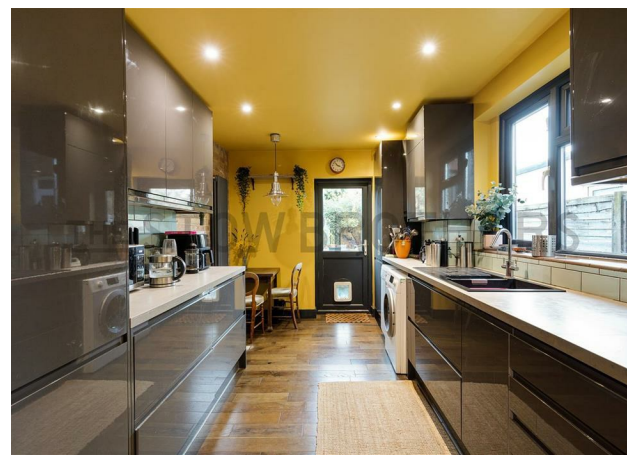
E8, E9, E5, N16, E3 & E2
 hellohackney@stowbrothers.com
 0208 520 3077

New Homes
 newhomes@stowbrothers.com
 0203 325 7227

Investment & Development
 id@stowbrothers.com
 0208 520 6220

Property Maintenance
 propertymanagement@stowbrothers.com
 0203 325 7228

STOWBROTHERS.COM
 @STOWBROTHERS



IF YOU LIVED HERE...

Beyond the timeless frontage, you'll discover an impressive home that strikes a careful balance between traditional character and contemporary updates across its 1,263 square feet.

The front reception room is beautifully bright thanks to large bay windows, while thoughtful decor enhances features such as the period fireplace, ornate coving and bespoke carpentry. The second reception is equally smart and would make a perfect dining room or additional living space.

In the kitchen/diner, sleek units and high-spec appliances are complemented by colour-drenched decor, creating a space that feels both modern and cheery. There's room for dining here, while the ground floor WC adds convenience.

On the first floor you'll find three bedrooms, along with a stylish bathroom featuring vintage-inspired fittings, metro brick tiling and ingenious alcove shelving.

Up in the loft sits the master bedroom, a private retreat complete with an ensuite featuring both a freestanding bathtub and separate shower, plus plenty of useful eaves storage.

At the rear, the beautifully landscaped garden offers a lush lawn, varied planting and a lovely sense of seclusion from the backdrop of mature trees.

If you're after more green space, both Epping Forest and Lloyd Park are just a short stroll away, each lovely in their own way.

Meanwhile, Wood Street is thriving with youthful energy. Exciting new shops and eateries sit alongside old favourites such as the unique Wood Street Indoor Market and the much-loved garden centre Lancasters. Not sure where to start? Try Wood Street Bear, popular brunch spot Dudley's, or award-winning bakery Chocolate. Even closer to home you'll find the charming coffee shop Ruttle & Rowe.

When it's time to travel further afield, you're just 0.7 miles from Wood Street



WHAT ELSE?

- The hub of Highams Park is a mile north, if you want to mix up your amenities.
- Parents will be pleased to know you have plenty of well regarded schools in the area.
- For a true sense of community, head to see the Walthamstow FC in action. Their home ground is a seven minute stroll away.

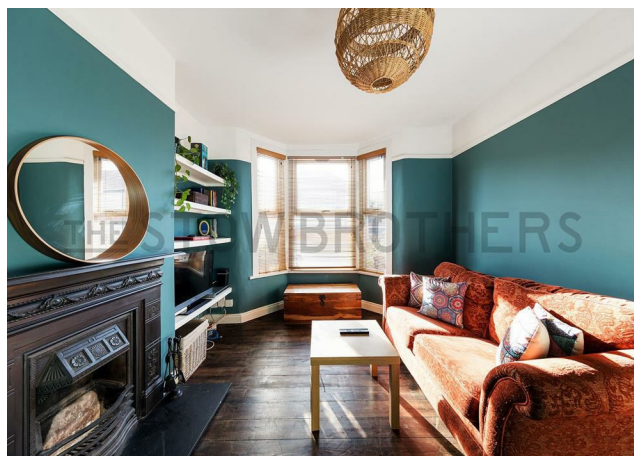
REQUEST A VIEWING
0203 397 9797

FOLLOW US → @STOWBROTHERS
STOWBROTHERS.COM



REQUEST A VIEWING
0203 397 9797

FOLLOW US → @STOWBROTHERS
STOWBROTHERS.COM



Reception Room

13'4" x 10'7"

Reception Room

11'5" x 8'3"

Kitchen

16'4" x 8'10"

Bedroom

14'3" x 13'3"



Bedroom

11'5" x 8'3"

Bedroom

9'7" x 8'11"

Bedroom

16'10" x 12'4"

Ensuite

8'5" x 7'11"



REQUEST A VIEWING
0203 397 9797

FOLLOW US → @STOWBROTHERS
STOWBROTHERS.COM