



Barcombe Avenue, SW2

£1,950 Per calendar month

This well presented garden flat is located on a sought after ABC road in Streatham Hill. Offering a generous size double bedroom, eat in kitchen and private garden. Perfect for a professional couple.

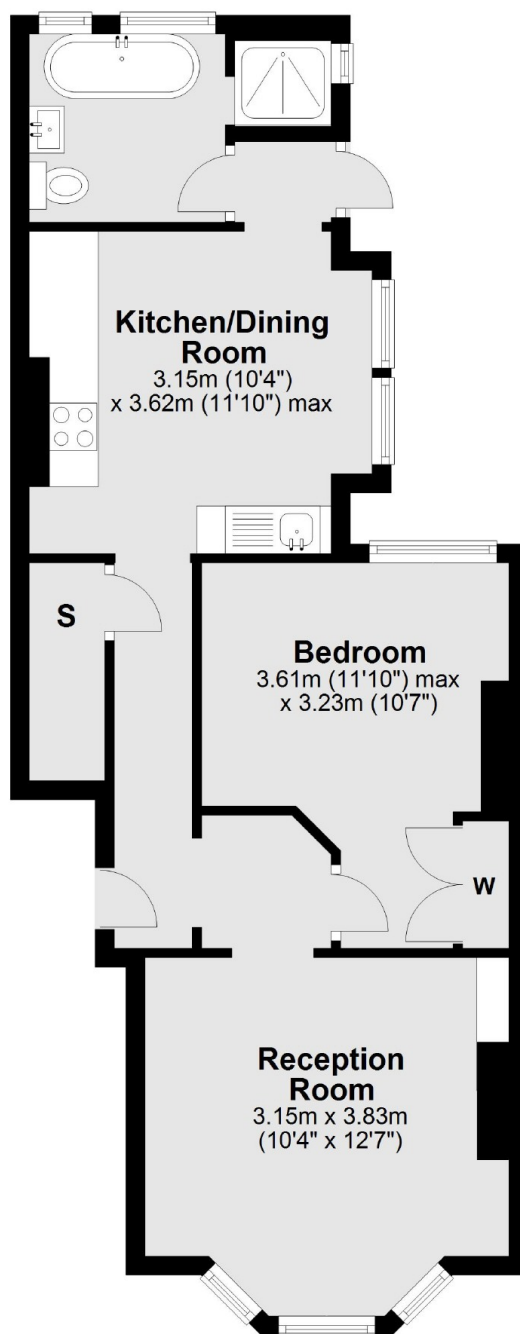
Barcombe Avenue runs just off Streatham Hill in the area known locally as the ABCD roads. The property is very convenient for access to Streatham High Road and Streatham Hill mainline station which has frequent trains to Victoria, via Clapham Junction.

Features

- Ground Floor Flat
- One Double Bedroom
- Spacious Reception
- Eat-in Kitchen
- Private South Facing Garden
- High Specification

**Barcombe Avenue,
London, SW2**

Ground Floor



Total area: approx. 51.3 sq. metres (552.0 sq. feet)

Dexters

Streatham
105 Streatham Hill
London
SW2 4UG
Lettings
020 8674 8400

Energy Rating: C. We aim to make our particulars both accurate and reliable. However they are not guaranteed; nor do they form part of an offer or contract. If you require clarification on any points then please contact us, especially if you're traveling some distance to view. Please note that appliances and heating systems have not been tested and therefore no warranties can be given as to their good working order.

 **RICS** | Regulated
Estate Agent
and Letting Agent

[dexters.co.uk](https://www.dexters.co.uk)